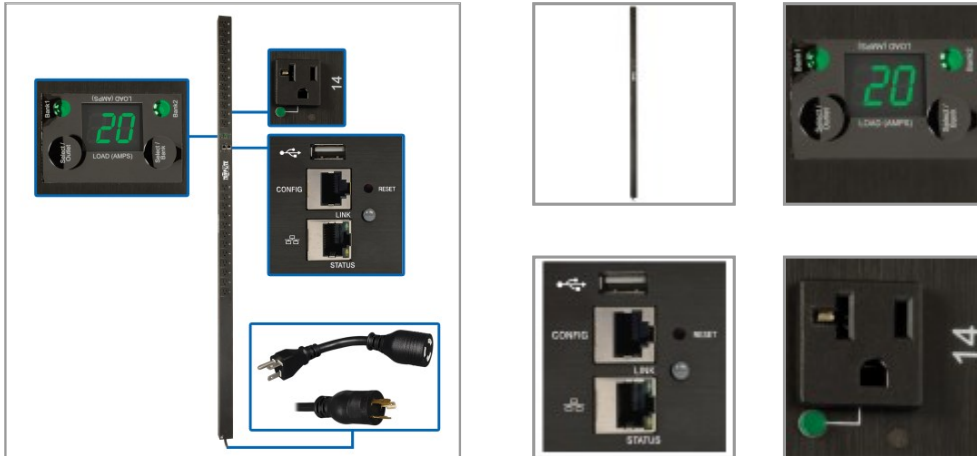


## 1.9kW Single-Phase Monitored Per-Outlet PDU - LX Platform, 24 5-15/20R Outlets (120V), L5-20P/5-20P Input, 0U, TAA

MODEL NUMBER: PDUNVR20LX



Allows real-time remote monitoring of individual outlets to ensure proper load balance and detect problems that could cause costly downtime.

### Features

**1.9kW Single-Phase PDU Distributes and Monitors Network-Grade Power** This monitored PDU provides real-time remote monitoring of voltage and load levels via its built-in network interface. Ideal for your small-to-mid-sized data center, computer room or high-density network closet, the PDUNVR20LX features 24 NEMA 5-15/20R 120V outlets, which distribute AC power to rack equipment. Advanced network power monitoring provides 1% billing-grade power consumption data for devices connected to each outlet.

**Monitored Per-Outlet PDU Lets You Keep Track of Power Consumption in Real Time** Not only can you remotely monitor voltage and frequency, but the PDUNVR20LX also allows metering of input current, as well as output current per outlet. Outlets can be individually monitored to ensure proper load balance and prevent downtime. Monitoring each outlet allows you to study power consumption trends for each connected device. This helps you detect hardware problems and network traffic bottlenecks, as well as compare power usage among various devices.

**Built-In LX Platform Network Management Card Allows Remote Access 24/7** The built-in WEBCARDLX with the latest version of PowerAlert Device Manager firmware (PADM20) provides enhanced remote management capabilities, including customizable dashboard graphs to fit user preferences. The PADM20 upgrade and PowerAlert Element Manager (PAEM) software form a powerful tool for expanding maintenance functions in large installations, including firmware update checks and backup and restoration of device configurations.

**Auto Probe Allows Autonomous PDU Management** The LX Platform interface allows use of IP-based Auto Probe feature, which ensures continuous network uptime by communicating with other network devices. If communication is lost, Auto Probe autonomously performs one or more user-configurable actions that help you return the network devices to an operational state, including email notifications. The innovative Auto Probe is especially ideal for ATMs, retail kiosks, digital signage, edge computing and PC gaming centers.

**Digital Load Meter Helps Prevent Potentially Expensive Overloads** A digital ammeter reports the load for each outlet separately and the total connected load. Monitoring amperage helps ensure load levels remain well below maximum capacity with no danger of overload that could lead to costly downtime or

### Highlights

- Advanced remote capabilities include outlet-level current monitoring in real time
- 24 NEMA 5-15/20R 120V outlets distribute AC power to connected equipment
- Pre-installed WEBCARDLX with latest version of PADM20 for enhanced remote management
- IP-based Auto Probe detects lost connectivity and notifies you immediately via email
- Digital ammeter for on-site load monitoring helps prevent power overloads

### Applications

- Power mission-critical rack equipment in a small-to-mid-sized data center, computer room or high-density network closet in a government, commercial or industrial facility
- Monitor power loads from various computers, switches, servers and other networking equipment
- Study power consumption trends over time for equipment connected to each individual outlet

### Package Includes

- PDUNVR20LX 1.9kW Single-Phase Monitored Per-Outlet PDU
- Built-in LX Platform interface
- Configuration cable
- (2) Cable retention brackets
- (24) Cable ties
- Rack-mounting hardware
- PDUMVROTATEBRKT mounting bracket accessory
- NEMA 5-20P plug adapter
- Owner's manual

damaged equipment.

**Easy to Install Vertically in an EIA-Standard 19 in. Rack**The 70-inch 0U PDU mounts vertically using the included toolless mounting buttons or the included rack-mounting brackets. Spare buttons are also included. Use the included PDUMVROTATEBRKT kit to install the PDU with outlets facing the rear for better airflow or equipment access. A 10-ft. (3.05 m) cord with a NEMA L5-20P input and optional 5-20P adapter connects the PDU to a compatible AC power source, such as a generator or protected UPS.

**TAA-Compliant for GSA Schedule Purchases**The PDUNVR20LX is compliant with the Federal Trade Agreements Act (TAA), which makes it eligible for GSA (General Services Administration) Schedule and other federal procurement contracts.

## Specifications

OVERVIEW	
UPC Code	037332242266
PDU Type	Monitored
INPUT	
Input Phase	Single-Phase
PDU Input Voltage	120
Recommended Electrical Service	Single-phase 20A 120V service
Maximum Input Amps	16
Maximum Input Amps Details	Agency de-rated to 16A continuous
PDU Plug Type	NEMA 5-20P; NEMA L5-20P
Input Cord Length (ft.)	10
Input Cord Length (m)	3.05
OUTPUT	
Output Capacity Details	1.92kW (120V) / 16A total capacity; 16A max per outlet
Frequency Compatibility	50 / 60 Hz
Output Receptacles	(24) 5-15/20R
Output Nominal Voltage	120V
USER INTERFACE, ALERTS & CONTROLS	
Front Panel LCD Display	Digital display reports load level in amps for LOAD BANK 1 (Outlets 1-12), LOAD BANK 2 (Outlets 13-24), LOAD BANKS 1&2 COMBINED (Outlets 1-24) and each individual output receptacle; Digital display can also be used to scroll the configured IP address
Front Panel LEDs	BANK 1 and BANK 2 LEDs verify the load bank the digital current display is reporting (Bank 1, Bank 2 or Banks 1&2 Combined); BANK 1 or BANK 2 LED will flash when the digital display is reporting output current for one of the outlets in that load bank; 24 additional LEDs, one near each output receptacle, will light continuously to verify power on status and flash to indicate that the digital display is reporting output current for just that individual receptacle. LX Platform Interface: Network Link/Activity Status LED (Yellow), Network Speed LED (Green); LX Platform status LED (Green)

Switches	SELECT OUTLET and SELECT BANK switches advance the LCD screen and associated LED to display power consumption for individual output receptacles and output load banks; Press and hold the SELECT BANK button for 4 seconds to rotate the digital display 90 degrees for overhead power input; Press and hold the SELECT OUTLET button for 4 seconds to scroll the configured IP address. LX Platform Interface: Recessed reset switch for interface reboot and factory reset
Current Measurement Accuracy (Amps)	+/-1%
Voltage Measurement Accuracy (Volts)	+/-1%
Power Measurement Accuracy (Watts)	+/-1%
<b>SURGE / NOISE SUPPRESSION</b>	
Automatic Shut-Off	No
<b>PHYSICAL</b>	
Material of Construction	Metal
Form Factors Supported	0U vertical rackmount; includes rackmount brackets. Supports toolless mounting in button-mount compatible racks
PDU Form Factor	Vertical (0U)
Shipping Dimensions (hwd / in.)	4.53 x 6.10 x 75.78
Shipping Weight (kg)	6.77
Unit Dimensions (hwd / in.)	70.000 x 2.200 x 2.050
Unit Dimensions (hwd / cm)	178 x 5.6 x 5.2
Unit Weight (lbs.)	9.6
Unit Weight (kg)	4.35
<b>ENVIRONMENTAL</b>	
Operating Temperature Range	32° to 104°F (0° to 40°C)
Storage Temperature Range	5° to 140°F (-15° to 60°C)
Relative Humidity	5% to 95% non-condensing
Operating Elevation (ft.)	0-10,000
Operating Elevation (m)	0-3000
<b>COMMUNICATIONS</b>	
PowerAlert Software	LX Platform Interface: PowerAlert Device Manager
Communications Cable	RJ45-to-DB9 configuration/console Access cable
Network Monitoring Port	RJ45 Network port, RJ45 Serial Config/Console Access port; USB A port supports a variety of Envirosense2 environmental and control modules. See Accessories>Management Hardware section for more information about these modules.
SNMP Compatibility	LX platform interface provides remote monitoring via Java-free HTML5 web interface, telnet, SSH and SNMP management systems
Network Compatibility	10 Mbps; 100 Mbps (Fast Ethernet)

FEATURES & SPECIFICATIONS	
High Availability PDU Features	Remote Network Notifications
STANDARDS & COMPLIANCE	
Product Certifications	CAN/CSA-C22.2 No. 60950-1 (Canada); NOM (Mexico); UL 60950-1
Product Compliance	RoHS; FCC Part 15 Class A (USA); Trade Agreements Act (TAA)
WARRANTY & SUPPORT	
Product Warranty Period (Worldwide)	2-year limited warranty