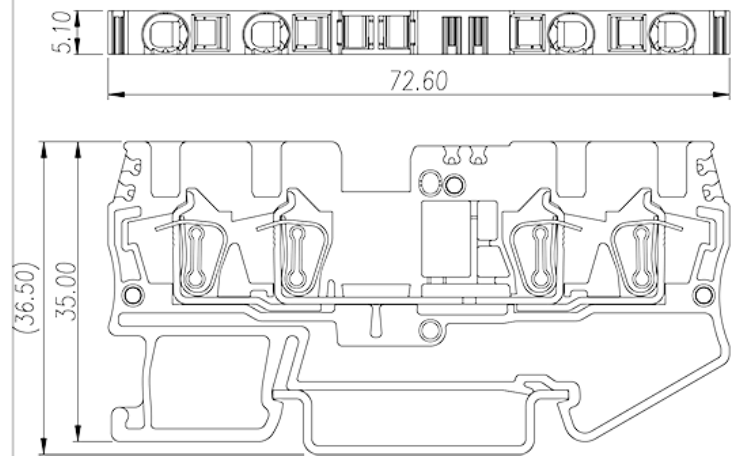
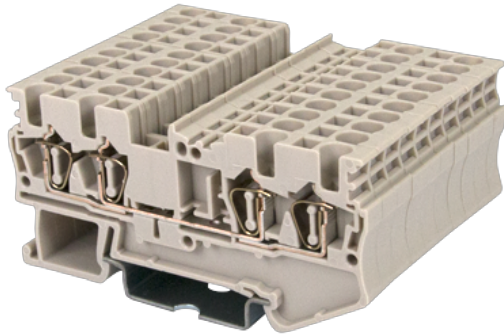


# AK2.5-TR

DIN Rail Terminal Blocks > Spring Clamp Connection

Date:2023-09-21Version:1.1



The web catalog is for reference only. Dinkle remains the right of product modification and engineering change of the design.  
The final product is made according to engineering drawing.

## Product Description

600V, 18A, Beige (default)

## General information

|                   |  |
|-------------------|--|
| Short description | DIN Rail terminal blocks, Feed through terminal blocks |
| Category          | Feed through terminal blocks                           |
| Color             | Beige (default)  |
| Connection method | Spring Clamp Connection                                |
| Type of locking   | Rail Mounting  |
| Length (mm)       | 72.6   |
| Width (mm)        | 5.1  |
| Height (mm)       | 35   |
| Level             | Single level   |
| Connection points | 4  |

## Material information

|  |    |
|--|----|
| Insulation material                          | PA |
| Insulation material group                    | I  |
| Flame retardant rating , compliant with UL94 | V0 |

|                       |                                     |
|-----------------------|-------------------------------------|
| Insulation resistance | $\geq 500\text{M}\Omega$ at DC 500V |
|-----------------------|-------------------------------------|

## Connection data-IEC

|  |         |
|--|---------|
| Rated voltage (V)  | 800     |
| Rated current (A)  | 24      |
| Rated voltage (III/3)(V)   | 800     |
| Rated impulse voltage (III/3)(KV)  | 8       |
| Conductor cross section solid. min (mm <sup>2</sup> )  | 0.2     |
| Conductor cross section solid.max (mm <sup>2</sup> )   | 4       |
| Conductor cross section stranded. min (mm <sup>2</sup> )                                     | 0.2     |
| Conductor cross section stranded. max (mm <sup>2</sup> )                                     | 2.5     |
| Conductor cross section flexible, with min ferrule without plastic sleeve (mm <sup>2</sup> ) | 0.25    |
| Conductor cross section flexible, with max ferrule without plastic sleeve (mm <sup>2</sup> ) | 2.5     |
| Conductor cross section flexible, with min ferrule with plastic sleeve (mm <sup>2</sup> )    | 0.25    |
| Conductor cross section flexible, with max ferrule with plastic sleeve (mm <sup>2</sup> )    | 2.5     |
| Slotted screwdriver size (Blade thickness x Width)(mm)                                       | 0.6x3.5 |
| Stripping Length (mm)  | 10      |
| Mounting rail  | TS-35   |
| End cover plate required   | YES     |
| Grounding connections  | NO      |

## Connection data-UL

|  |     |
|--|-----|
| Rated voltage (UL/CUL Group B)(V)                | 600 |
| Rated current (UL/CUL Group B)(A)                | 18  |
| Rated voltage (UL/CUL Group C)(V)                | 600 |
| Rated current (UL/CUL Group C)(A)                | 18  |
| Min. solid wire connection (AWG) acc. to UL/CUL  | 30  |
| Max. solid wire connection AWG acc. to UL/CUL    | 12  |
| Min. stranded wire connection AWG acc. to UL/CUL | 30  |
| Max. stranded wire connection AWG acc. to UL/CUL | 12  |

## Environment & Safety

|   |     |
|---|-----|
| Back of the hand protection (YES or NO) | YES |
|---|-----|

|                                 |     |
|---------------------------------|-----|
| Finger protection (YES or NO)   | YES |
| Operating temperature. max (°C) | 120 |
| Operating temperature. min (°C) | -40 |

## UL Recognized

|                            |       |
|----------------------------|-------|
| Wire Range (Group B)(AWG)  | 30~12 |
| Rated voltage (Group B)(V) | 600   |
| Rated current (Group B)(A) | 18    |
| Wire Range (Group C)(AWG)  | 30~12 |
| Rated voltage (Group C)(V) | 600   |
| Rated current (Group C)(A) | 18    |

## CUL Recognized

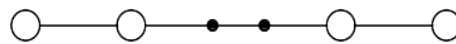
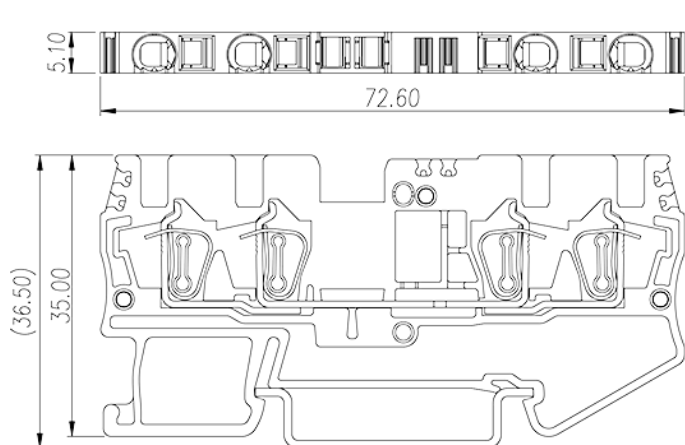
|                            |       |
|----------------------------|-------|
| Wire Range (Group B)(AWG)  | 30~12 |
| Rated voltage (Group B)(V) | 600   |
| Rated current (Group B)(A) | 18    |
| Wire Range (Group C)(AWG)  | 30~12 |
| Rated voltage (Group C)(V) | 600   |
| Rated current (Group C)(A) | 18    |

## VDE Approval

|                               |         |
|-------------------------------|---------|
| Wire Range (mm <sup>2</sup> ) | 0.2~2.5 |
| Rated voltage (V)             | 800     |
| Rated current (A)             | 24      |

## Drawings

|  |  |
|--|--|
|  |  |
|--|--|



## Approvals

