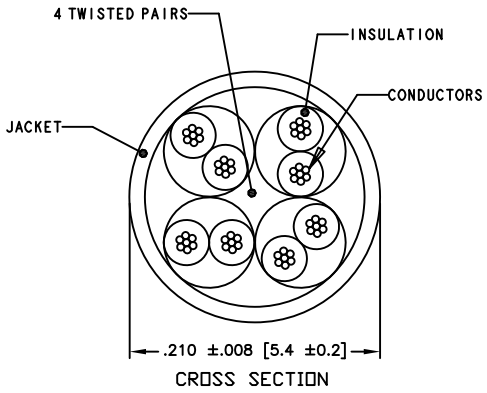
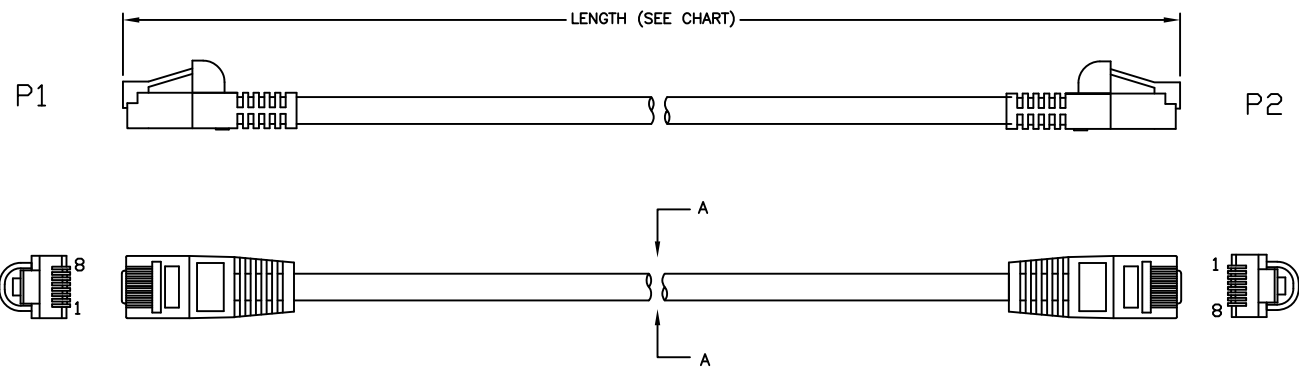


APPROVED: _____
 DATE: _____ TITLE: _____
 CUSTOM CABLE ASSEMBLIES ARE NON-CANCELLABLE/NON-RETURNABLE

Rev	AWO #	Description	Date	Appr
-		RELEASED	3/25/15	
A		ADDED 150FT VERSION TO CHART	5/10/19	SS
B		ADDED COLOR DARK GREY TO CHART	3/15/22	SS



PIN ASSIGNMENT (TIA 568A)

P1	P2
1	1 White/Green
2	2 Green
3	3 White/Orange
6	6 Orange
4	4 Blue
5	5 White/Blue
7	7 White/Brown
8	8 Brown

NPC-5E-XXX-XX-BB

LENGTH	CODE
12.0"±.39" [305±10]	001
24.0"±1.2" [610±20]	002
36.0"±1.2" [915±20]	003
60.0"±1.5" [1,525±40]	005
84.0"±1.9" [2,135±50]	007
120.0"±2.4" [3,050±50]	010
168.0"±2.4" [4,270±60]	014
300.0"±2.4" [7,625±60]	025
600.0"±2.7" [15,250±70]	050
1,200.0"±2.7" [30,500±70]	100
1,800.0"±5.0" [30,500±127]	150

COLOR	CODE
BLUE	BU
ORANGE	OR
WHITE	WT
BLACK	BK
RED	RD
GREEN	GR
GRAY	GY
DARK GRAY	DGY
PURPLE	PU

SPECIFICATIONS:
 Plugs:
 RJ45, 8P8C, CAT 5e Plug, Long Body, Polycarbonate, Rated UL94V-0, Gold plated.
 Boots: PVC, Bubble style
 Cable:
 Cat 5e, UTP 24 AWG X 4P, Stranded bare Copper, 350MHz
 O.D.: 5.4mm ±0.2mm, UL, cUL & ETL verified
 Jacket color (See Chart)
 Electrical:
 Hi-Pot: 300V DC / 10ms
 100% tested for Open, shorts and crossed wires
 Environmental:
 Lead free, RoHS compliant.



UNLESS OTHERWISE SPECIFIED
 ALL DIMENSIONS ARE INCHES [MM]
 TOLERANCES: EXCEPT AS NOTED

INCHES		HOLES	
.X ±.10	ØX ±.10		
.XX ±.020	ØXX ±.015		
.XXX ±.015	ØXXX ±.010		

APPROVALS		DATE
DRAWN	SS	3/25/15
CHECKED		
APPROVED		

ADAM TECH
 909 Rahway Avenue, Union, NJ 07083
 Phone: 908-687-5000 Fax: 908-687-5710

TITLE: RJ45 NETWORK PATCH CABLE, CAT 5e, 350MHz, UTP, STRANDED, BUBBLE BOOT

SIZE X	PART NO. NPC-5E-XXX-XX-BB	REV. B
-----------	------------------------------	-----------

REF: _____ SCALE: NTS SHEET 1 OF 1