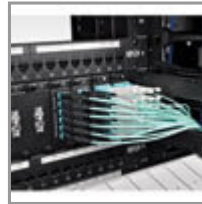


## Important Note

OM3 can support 40GBASE-SR4 / 100GBASE-SR10 in applicable parallel optics networks.

## MTP/MPO Patch Cable with Push/Pull Tabs, 12 Fiber, 40GbE, 40GBASE-SR4, OM3 Plenum-Rated - Aqua, 3M (10 ft.)

MODEL NUMBER: **N844-03M-12-P**



## Highlights

- Hi-density MTP/MPO 12-fiber connectors for reduced cabling
- Push/Pull tab connectors offer maximum accessibility in high density installations; install / remove with one hand
- OM3 rated 50/125 Multimode
- Supports to 40GbE speeds

## Package Includes

- 3 Meter MTP / MPO Patch Cable, 12 Fiber, 40GbE Aqua OM3 Plenum

## Features

- MTP / MPO Push-Pull Connectors for Quick Fiber Optic connections
- Push/Pull tab connectors offer maximum accessibility in high density installations; install / remove with one hand
- 12 times the density of SC style connectors
- High Density design cuts down on installation costs
- 50/125 OM3 Rated Multimode Fiber, 850nm
- Plenum rated jacket
- Unique cable ID label for Quality Control and Traceability
- Each cable 100% tested for low insertion loss and back reflection
- Test data supplied with each cable
- Custom lengths available

## Specifications

OVERVIEW	
UPC Code	037332173737
Technology	Multimode
Optical Mode	OM3

<b>PHYSICAL</b>	
Cable Jacket Color	Aqua
Connector Color	Aqua; Black
Cable Jacket Material	PVC
Cable Jacket Rating	OFNP
Clad Diameter (microns)	125
Core Diameter (microns)	50
Number of Fibers	12
Cable Length (ft.)	9.8
Cable Length (m)	2.99
Cable Length (in.)	118.1
Minimum Bend Radius	20 mm (Dynamic); 10 mm (Static)
Shipping Dimensions (hwd / in.)	7.00 x 9.00 x 0.50
Shipping Dimensions (hwd / cm)	17.78 x 22.86 x 1.27
Shipping Weight (lbs.)	0.08
Shipping Weight (kg)	0.04
Fiber Cable Length	3M (9.8 ft)
<b>ENVIRONMENTAL</b>	
Operating Temperature Range	-4° to 140°F (-20° to 60°C)
Storage Temperature Range	-4° to 140°F (-20° to 60°C)
Operating Humidity Range	5% to 85% RH, Non-Condensing
Storage Humidity Range	35% to 65% RH, Non-Condensing
<b>COMMUNICATIONS</b>	
Network Compatibility	40 Gbps; 100 Gbps; 400 Gbps
Attenuation @ 850NM	3.0 dB/km
Insertion Loss	0.35 dB
<b>CONNECTIONS</b>	
Side A - Connector 1	12-STRAND MTP/MPO (FEMALE)
Side B - Connector 1	12-STRAND MTP/MPO (FEMALE)
Endface Polish	PC
<b>FEATURES &amp; SPECIFICATIONS</b>	
Push/Pull Tabs	Yes

Breakout	No
Trunk	No
<b>STANDARDS &amp; COMPLIANCE</b>	
Product Compliance	RoHS; REACH
<b>WARRANTY &amp; SUPPORT</b>	
Product Warranty Period (Worldwide)	Lifetime limited warranty