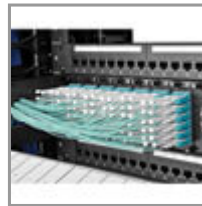


Important Note

OM3 can support 40GBASE-SR4 / 100GBASE-SR10 in applicable parallel optics networks.

10Gb Duplex Multimode 50/125 OM3 LSZH Fiber Patch Cable with Push/Pull Tab Connectors, (LC/LC) - Aqua, 5M (16 ft.)

MODEL NUMBER: **N820-05M-T**



Highlights

- Push/Pull tab connectors offer maximum accessibility in high density installations; install / remove with one hand without needing additional tools
- Slim uniboot design saves space and makes cables easier to manage
- Premium-grade ceramic ferrules designed specifically for 10GbE and faster applications
- Sturdy plastic housing for long-lasting durability
- Backward compatible with existing 50/125 fiber
- Max 10GbE distance of 300 meters @850nm
- Low-Smoke, Zero Halogen (LSZH) Aqua jacket

Package Includes

- 5M (16-ft) Duplex Multimode 50/125 Aqua OM3 Fiber Patch Cable with Push/Pull Tabs, LC/LC

Features

- 5M (16-ft) LC/LC, OM3 rated
- Push/Pull tab connectors offer maximum accessibility in high density installations; install / remove with one hand without needing additional tools
- Slim uniboot design saves space and makes cables easier to manage
- Premium-grade ceramic ferrule designed specifically for 10GbE and faster applications
- Sturdy plastic housing for long-lasting durability
- 10GbE speed to 300 meters @850nm
- Use with VCSEL and LED laser light sources
- High-Speed, High-Bandwidth, Low-Cost
- Backward compatible with legacy LAN's
- Ideal for Fibre Channel (SAN) applications
- IEEE 802.3ae and TIA LOMMF compliant

Specifications

OVERVIEW	
UPC Code	037332184504
Technology	Multimode

Optical Mode	OM3
PHYSICAL	
Cable Jacket Color	Aqua
Connector Color	White; Aqua
Cable Jacket Material	LSZH
Cable Jacket Rating	OFNR
Clad Diameter (microns)	125
Core Diameter (microns)	50
Number of Fibers	2
Cable Length (ft.)	16.4
Cable Length (m)	5.00
Cable Length (in.)	196.9
Minimum Bend Radius	20 mm (Dynamic); 10 mm (Static)
Shipping Dimensions (hwd / in.)	9.00 x 7.00 x 0.50
Shipping Dimensions (hwd / cm)	22.86 x 17.78 x 1.27
Shipping Weight (lbs.)	0.07
Shipping Weight (kg)	0.03
Fiber Cable Length	5M (16.4 ft)
ENVIRONMENTAL	
Operating Temperature Range	-4° to 140°F (-20° to 60°C)
Storage Temperature Range	-4° to 140°F (-20° to 60°C)
Operating Humidity Range	5% to 85% RH, Non-Condensing
Storage Humidity Range	35% to 65% RH, Non-Condensing
COMMUNICATIONS	
Network Compatibility	1 Gbps (Gigabit); 10 Gbps; 25 Gbps; 40 Gbps; 100 Gbps
Attenuation @ 850NM	3.0 dB/km
Insertion Loss	0.20 dB
CONNECTIONS	
Side A - Connector 1	LC DUPLEX (MALE)
Side B - Connector 1	LC DUPLEX (MALE)
Endface Polish	PC
FEATURES & SPECIFICATIONS	

Push/Pull Tabs	Yes
Breakout	No
Trunk	No
STANDARDS & COMPLIANCE	
Product Compliance	RoHS; REACH
WARRANTY & SUPPORT	
Product Warranty Period (Worldwide)	Lifetime limited warranty