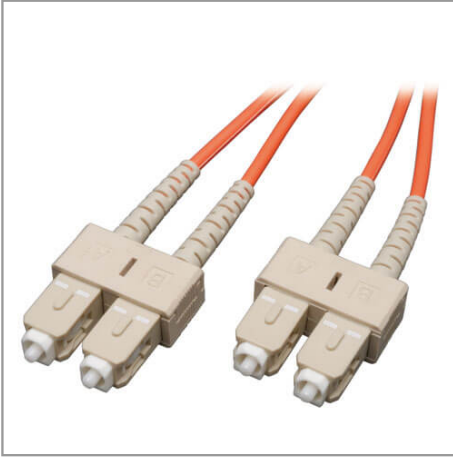


Duplex Multimode 50/125 Fiber Patch Cable (SC/SC), 15M (50 ft.)

MODEL NUMBER: **N506-15M**



Description

This 15-meter multimode duplex Fibre Channel SC/SC Ethernet cable is manufactured from 50/125 zipcord fiber. The cable has SC connectors on each end, a PVC jacket and is FDDI and OFNR rated. 50/125 Duplex multimode fiber is most commonly used in Fibre Channel applications. It is backward compatible with 62.5 micron fiber and built-in headroom for future applications. The cable provides higher bandwidth optimized for Gigabit and 10 Gbps networks as well. Also available in 1, 2, 3, 5, 10, 30 and 50 meter lengths. Search "N506-" to bring up all lengths. Also search "N516-" for SC-LC cables, and "N520-" for LC-LC cables.

Features

- Constructed with 50/125 micron cable
- Length - 15M
- Use on fiber and fibre channel installations
- SC male to SC male connectors
- Higher bandwidth optimized for gigabit and 10Gbps networks
- Backward compatible with 62.5 micron fiber
- Built-in headroom for future applications
- Number of fibers: 2
- Fiber type: all glass graded index
- Core diameter: two 50+/-3 microns
- CLAD diameter: 125+/-2 microns
- Primary coating diameter: 245+/-15 microns
- Primary coating material: acrylate
- Secondary coating diameter: 900+/-50 microns
- Secondary coating material: PVC
- Attenuation @850NM: 3.5DB/KM maximum, @1300NM: 1.0DB/KM maximum
- Bandwidth @850NM: 220 MHz-KM minimum, @1300NM: 600 MHz-KM minimum
- Numeric aperture: .275 nominal

Highlights

- Premium PVC 50/125 multimode patch cables
- Attenuation loss meets or exceeds the latest industry standards
- Higher bandwidth optimized for gigabit and 10Gbps networks
- Backward compatible with 62.5 micron fiber
- Built-in headroom for future applications

System Requirements

- Any fiber optic hardware or NIC card requiring multimode duplex cable with SC/SC connectors

Package Includes

- 15M duplex MMF cable SC/SC 50/125 fiber

- Proof test level: 100,000 PSI
- Insertion loss testing performed on every connector (0.2db typical) and provided with cable
- Beveled edge on ends of glass makes insertion of plug a breeze

Specifications

OVERVIEW	
UPC Code	037332119612
Technology	Multimode
Optical Mode	OM2
PHYSICAL	
Cable Jacket Color	Orange
Connector Color	Beige
Cable Jacket Material	LSZH
Cable Jacket Rating	OFNR
Clad Diameter (microns)	125
Core Diameter (microns)	50
Number of Fibers	2
Cable Length (ft.)	49.2
Cable Length (m)	15.00
Cable Length (in.)	590.6
Minimum Bend Radius	20 mm (Dynamic); 10 mm (Static)
Shipping Dimensions (hwd / in.)	9.00 x 7.00 x 0.75
Shipping Dimensions (hwd / cm)	22.86 x 17.78 x 1.90
Shipping Weight (lbs.)	0.41
Shipping Weight (kg)	0.19
Fiber Cable Length	15M (49.2 ft)
ENVIRONMENTAL	
Operating Temperature Range	-4° to 140°F (-20° to 60°C)
Storage Temperature Range	-4° to 140°F (-20° to 60°C)
Operating Humidity Range	5% to 85% RH, Non-Condensing
Storage Humidity Range	35% to 65% RH, Non-Condensing
COMMUNICATIONS	
Network Compatibility	1 Gbps (Gigabit); 10 Gbps

Attenuation @ 850NM	3.0 dB/km
Insertion Loss	0.20 dB
CONNECTIONS	
Side A - Connector 1	SC DUPLEX (MALE)
Side B - Connector 1	SC DUPLEX (MALE)
Endface Polish	PC
FEATURES & SPECIFICATIONS	
Push/Pull Tabs	No
Breakout	No
Trunk	No
STANDARDS & COMPLIANCE	
Product Compliance	RoHS; REACH
WARRANTY & SUPPORT	
Product Warranty Period (Worldwide)	Lifetime limited warranty