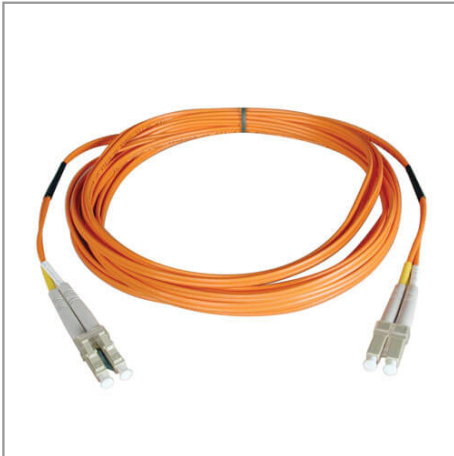


## Duplex Multimode 62.5/125 Fiber Patch Cable (LC/LC), 10M (33 ft.)

MODEL NUMBER: N320-10M



### Features

- Manufactured from 62.5/125 duplex (zipcord) fiber
- PVC jacket
- Length: 10-meter Connectors: LC connector on each end
- Insertion loss testing performed on every connector (0.2db typical) and provided with cable
- Beveled edge on ends of glass makes insertion of plug a breeze
- Fiber made from glass (not a polymer)
- Duplex multimode fiber is most commonly used in LAN applications where links are typically 10-ft. (3.05 m) or less
- Fiber optic distributed data interface (FDDI) rated
- OFNR (riser rated)

## Specifications

OVERVIEW	
UPC Code	037332116901
Technology	Multimode
Optical Mode	OM1
PHYSICAL	
Cable Jacket Color	Orange
Connector Color	Gray
Cable Jacket Material	LSZH

### Highlights

- Manufactured from 62.5/125 duplex (Zipcord) fiber
- Length: 10-Meters Connectors: LC connector on each end
- Insertion loss testing performed on every connector (0.2dB typical)
- Duplex multimode fiber is most commonly used in LAN applications where links are typically 10 feet or less
- Fiber Optic Distributed Data Interface (FDDI) Rated

### System Requirements

- Any fiber optic hardware or NIC card requiring multimode duplex cable with LC connectors

### Package Includes

- 10 meter Duplex MMF Cable LC/LC 62.5/125 Micron Fiber

Cable Jacket Rating	OFNR
Clad Diameter (microns)	125
Core Diameter (microns)	62.5
Number of Fibers	2
Cable Length (ft.)	32.8
Cable Length (m)	10.00
Cable Length (in.)	393.7
Minimum Bend Radius	20 mm (Dynamic); 10 mm (Static)
Shipping Dimensions (hwd / in.)	9.00 x 7.00 x 0.50
Shipping Dimensions (hwd / cm)	22.86 x 17.78 x 1.27
Shipping Weight (lbs.)	0.19
Shipping Weight (kg)	0.09
Fiber Cable Length	10M (32.8 ft)
<b>ENVIRONMENTAL</b>	
Operating Temperature Range	-4° to 140°F (-20° to 60°C)
Storage Temperature Range	-4° to 140°F (-20° to 60°C)
Operating Humidity Range	5% to 85% RH, Non-Condensing
Storage Humidity Range	35% to 65% RH, Non-Condensing
<b>COMMUNICATIONS</b>	
Network Compatibility	1 Gbps (Gigabit); 10 Gbps
Attenuation @ 850NM	3.0 dB/km
Insertion Loss	0.20 dB
<b>CONNECTIONS</b>	
Side A - Connector 1	LC DUPLEX (MALE)
Side B - Connector 1	LC DUPLEX (MALE)
Endface Polish	PC
<b>FEATURES &amp; SPECIFICATIONS</b>	
Push/Pull Tabs	No
Breakout	No
Trunk	No
<b>STANDARDS &amp; COMPLIANCE</b>	
Product Compliance	RoHS; REACH

**WARRANTY & SUPPORT**

Product Warranty Period  
(Worldwide)

Lifetime limited warranty