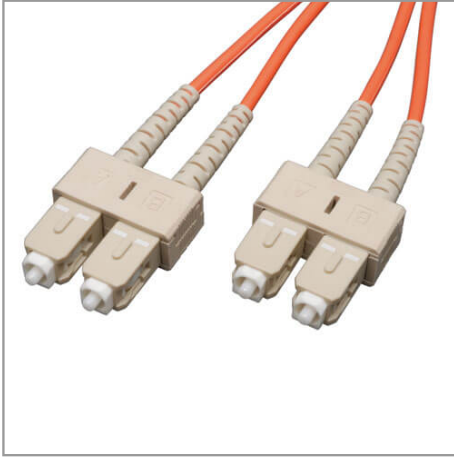


Duplex Multimode 62.5/125 Fiber Patch Cable (SC/SC), 8M (26 ft.)

MODEL NUMBER: N306-08M



Highlights

- Premium PVC 62.5/125µm multimode patch cables
- Attenuation loss meets or exceeds the latest industry standards

System Requirements

- Any fiber optic hardware or NIC card requiring multimode duplex cable with SC/SC connectors

Package Includes

- 8 meter duplex MMF cable SC/SC 62.5/125 fiber

Features

- Manufactured from 62.5/125 duplex (zipcord) fiber
- PVC jacket
- Length: 8 meters (26ft) Connectors: 2 SC connectors on each end
- Insertion loss testing performed on every connector (0.2db typical) and provided with cable
- Beveled edge on ends of glass makes insertion of plug a breeze
- Fiber made from glass (not a polymer)
- Duplex multimode fiber is most commonly used in LAN applications
- Fiber optic distributed data interface (FDDI) rated
- OFNR (riser rated)

Specifications

| OVERVIEW | |
|-----------------------|--------------|
| UPC Code | 037332138170 |
| Technology | Multimode |
| Optical Mode | OM1 |
| PHYSICAL | |
| Cable Jacket Color | Orange |
| Connector Color | White |
| Cable Jacket Material | LSZH |
| Cable Jacket Rating | OFNR |

| | |
|--------------------------------------|-------------------------------|
| Clad Diameter (microns) | 125 |
| Core Diameter (microns) | 62.5 |
| Number of Fibers | 2 |
| Cable Length (ft.) | 26.2 |
| Cable Length (m) | 7.99 |
| Cable Length (in.) | 315 |
| Minimum Bend Radius | 20MM (Dynamic); 10MM (Static) |
| Shipping Dimensions (hwd / in.) | 9.00 x 7.00 x 0.50 |
| Shipping Dimensions (hwd / cm) | 22.86 x 17.78 x 1.27 |
| Shipping Weight (lbs.) | 0.18 |
| Shipping Weight (kg) | 0.08 |
| ENVIRONMENTAL | |
| Operating Temperature Range | -4 to 140 °F (-20 to 60 °C) |
| Storage Temperature Range | -4 to 140 °F (-20 to 60 °C) |
| Operating Humidity Range | 5% to 85% RH, Non-Condensing |
| Storage Humidity Range | 35% to 65% RH, Non-Condensing |
| COMMUNICATIONS | |
| Network Compatibility | 1 Gbps (Gigabit); 10 Gbps |
| Attenuation @ 850NM | 3.0dB/Km |
| Insertion Loss | 0.20dB |
| CONNECTIONS | |
| Side A - Connector 1 | SC DUPLEX (MALE) |
| Side B - Connector 1 | SC DUPLEX (MALE) |
| Endface Polish | PC |
| FEATURES & SPECIFICATIONS | |
| Push/Pull Tabs | No |
| Breakout | No |
| Trunk | No |
| STANDARDS & COMPLIANCE | |
| Product Compliance | RoHS; REACH |
| WARRANTY & SUPPORT | |



1000 Eaton Boulevard
Cleveland, OH 44122
United States

| | |
|--|---------------------------|
| Product Warranty Period (Worldwide) | Lifetime limited warranty |
|--|---------------------------|



© 2023 Eaton. All Rights Reserved.
Eaton is a registered trademark. All other trademarks
are the property of their respective owners.