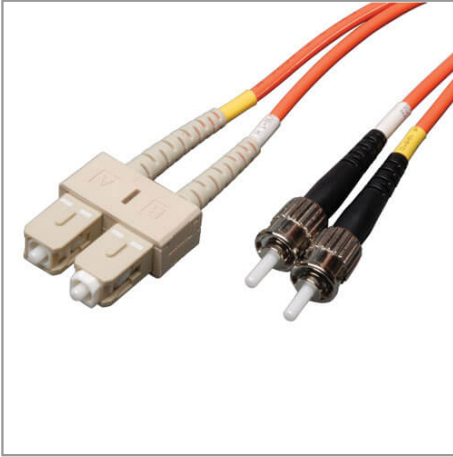


Duplex Multimode 62.5/125 Fiber Patch Cable (SC/ST), 10M (33 ft.)

MODEL NUMBER: N304-10M



Highlights

- Premium PVC 62.5/125µm multimode patch cables
- Attenuation loss meets or exceeds the latest industry standards

System Requirements

- Any fiber optic hardware or NIC card requiring multimode duplex cable with SC/ST connectors

Package Includes

- 10M (32.8-ft.) duplex MMF cable ST/SC 62.5/125 fiber

Description

This multimode duplex fiber optic SC/ST Ethernet cable is manufactured from 62.5/125 zipcord fiber. The cable has ST to SC connectors, a PVC jacket and is FDDI and OFNR rated. Duplex multimode fiber is most commonly used in LAN applications.

Features

- Manufactured from 62.5/125 duplex (zipcord) fiber
- PVC jacket
- Length: 10M (32.8-ft.) Connectors: 2 ST to 2 SC connectors
- Insertion loss testing performed on every connector (0.2db typical) and provided with cable
- Beveled edge on ends of glass makes insertion of plug a breeze
- Fiber made from glass (not a polymer)
- Color coded shrouds identify transmit and receive
- Fiber optic distributed data interface (FDDI) rated
- OFNR (riser rated)

Specifications

OVERVIEW	
UPC Code	037332122551
Technology	Multimode
Optical Mode	OM1
PHYSICAL	
Cable Jacket Color	Orange

Connector Color	White; Black
Cable Jacket Material	LSZH
Cable Jacket Rating	OFNR
Clad Diameter (microns)	125
Core Diameter (microns)	62.5
Number of Fibers	2
Cable Length (ft.)	32.8
Cable Length (m)	10.00
Cable Length (in.)	393.7
Minimum Bend Radius	20 mm (Dynamic); 10 mm (Static)
Shipping Dimensions (hwd / in.)	9.00 x 7.00 x 0.50
Shipping Dimensions (hwd / cm)	22.86 x 17.78 x 1.27
Shipping Weight (lbs.)	0.30
Shipping Weight (kg)	0.14
Fiber Cable Length	10M (32.8 ft)
ENVIRONMENTAL	
Operating Temperature Range	-4° to 140°F (-20° to 60°C)
Storage Temperature Range	-4° to 140°F (-20° to 60°C)
Operating Humidity Range	5% to 85% RH, Non-Condensing
Storage Humidity Range	35% to 65% RH, Non-Condensing
COMMUNICATIONS	
Network Compatibility	1 Gbps (Gigabit); 10 Gbps
Attenuation @ 850NM	3.0 dB/km
Insertion Loss	0.20 dB
CONNECTIONS	
Side A - Connector 1	SC DUPLEX (MALE)
Side B - Connector 1	ST DUPLEX (MALE)
Endface Polish	PC
FEATURES & SPECIFICATIONS	
Push/Pull Tabs	No
Breakout	No
Trunk	No

STANDARDS & COMPLIANCE	
Product Compliance	RoHS; REACH
WARRANTY & SUPPORT	
Product Warranty Period (Worldwide)	Lifetime limited warranty