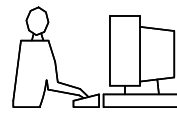


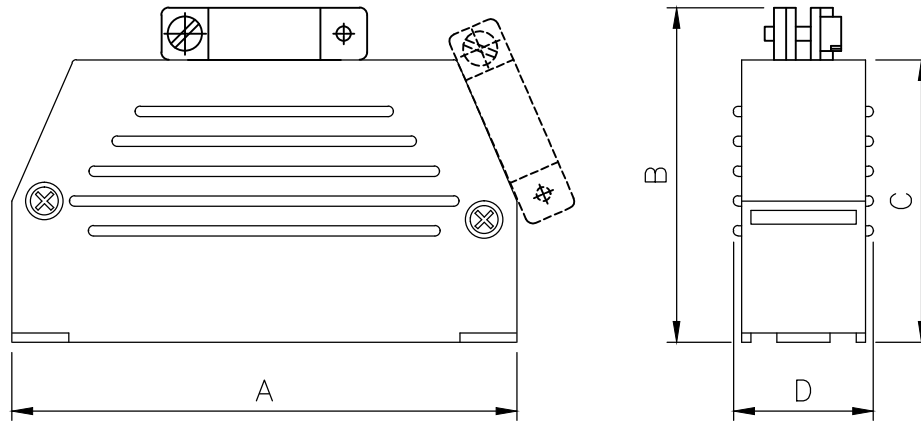
THIS IS A C.A.D. GENERATED DRAWING
DO NOT MAKE MANUAL REVISIONS TO MASTER.



* UNLESS OTHERWISE SPECIFIED TOLERANCES
ON DECIMAL IS:
UNIT: MM

BACKSHELL KIT INCLUDES:

- (2) BACKSHELL HALVES
- (2) CLAMP
- (2) CLAMP SCREWS
- (2) SHELL SCREWS
- (2) SCREWS
- (1) SLIDE LOCK KITS



DIMENSIONS(MM/IN)				
SIZE	A±0.5	B±0.5	C±0.5	D±0.8
9	32.2	28.6	22.1	15.0
15	39.8	34.1	26.1	15.0
25	54.2	38.3	30.3	15.0

Ordering information:

SIZE	P/N-KITTED	Product Code
9-way	2801-0103-01	MHED-MDS09S
15-way	2801-0103-02	MHED-MDS15S
25-way	2801-0103-03	MHED-MDS25S

THESE DRAWINGS AND SPECIFICATIONS ARE THE PROPERTY OF MH CONNECTORS LTD. AND SHALL NOT BE REPRODUCED, COPIED OR USED AS THE BASIS FOR THE MANUFACTURE OR SALE OF APPARATUS WITHOUT WRITTEN PERMISSION.

DRAWN
Haley
DATE
07-31-14

APPROVED
DATE



THIS SERIES FULLY CONFORMS TO THE EUROPEAN UNION DIRECTIVES 2002/95/EC AND 2002/96/EC FOR RoHS COMPLIANCY.



MH CONNECTORS LTD.

SCALE
SHEET OF
1 OF 1
REV:
1.0

DRAWING No
MHED-MDSXXX