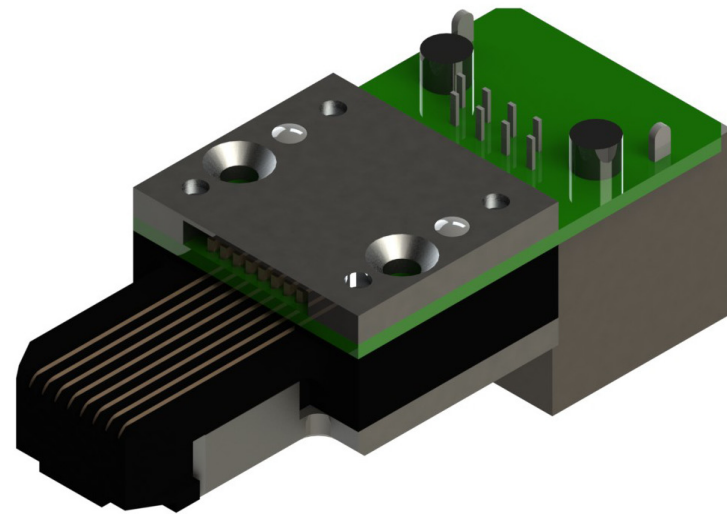


RJ45 Test Plug Module

MA002667_0

- High quality RJ45 test plug between DUT (Device Under Test) and test system
- Cutting-edge reliable, durable, and high accurate solution to replace commercial cables and connectors
- Applicable with all RJ45 connectors
- Durability for high volume production testing



USE CASES

RJ45 interface testing of devices with RJ45 connectors, like desktop computers, laptops, televisions, digiboxes, ethernet routers, ethernet switches, and others.

Applicable for testing in high volume production, R&D laboratories, service centers, and test laboratories.

TECHNICAL CHARACTERISTICS

Dimensions: 45*18*15.85 mm
(1.77"*0.71"*0.63")

INTERFACE

RJ45 plug, RJ45 (Cat6a receptacle)

INSTALLATION REQUIREMENTS

M2 countersunk screws, positioning pins diameter 2 mm - delivered with test module

CONTACT INFO

sales@bluelec.com

TECHNICAL DETAILS

Product is designed to meet electrical, mechanical and environmental performance requirements of RJ45 connector.

Environments

Temperature	from 0 °C to +60 °C
Relative humidity	from 15% to 95% non-condensing

Specification

Electrical	
PWB data lines differential impedance	100 ohm
Data speed	10 Gbit/s
Rated voltage (max.)	125 V AC (rms)
Rated current (max.)	1.5 A
Mechanical	
Durability	50000 (typical)
Mating force (max.)	35 N
Un-mating force (max.)	25 N
RoHS compliant	
Lead free	

