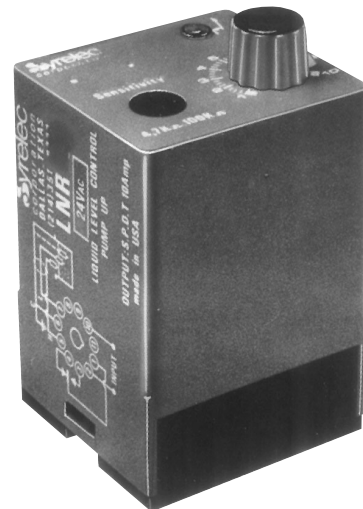


# NR SERIES

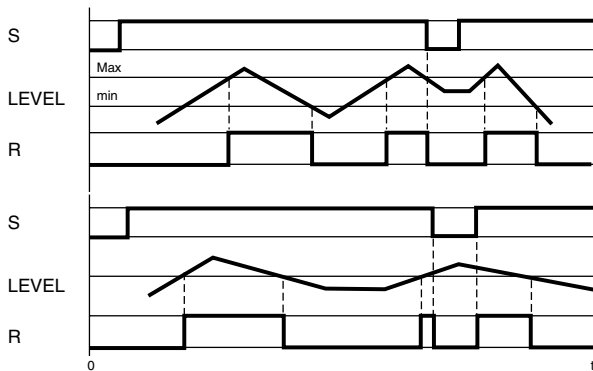
## LIQUID LEVEL CONTROL

### PUMP DOWN

UL listed CSA recognized



- **24 VAC to 220 VAC Operating Voltages**
- **4.7 kΩ to 100 kΩ Sensitivity**
- **LED Relay Indicator**
- **10 Amp SPDT Relay**

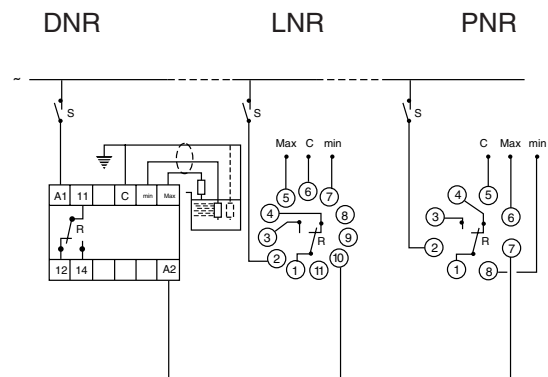


The output relay energizes when the liquid level reaches the high probe. The relay de-energizes when the liquid falls below the low probe. This control can also be used with only two probes by connecting the maximum and common terminals together. The output is energized when the level reaches the low probe. In both functions, if the container is conductive, it may be used as the common probe in some applications.

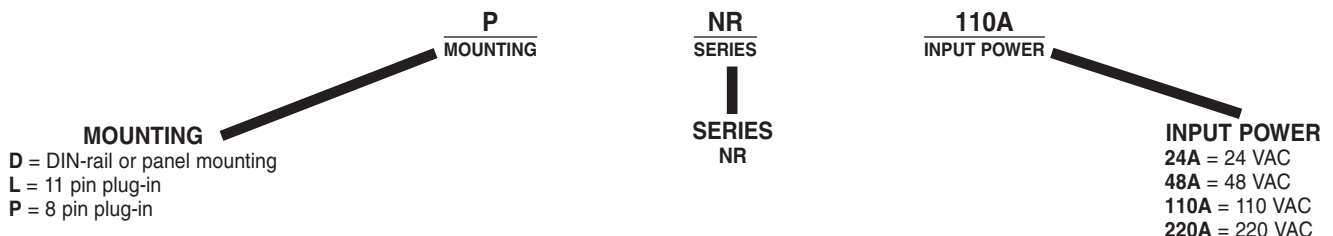
**SPECIFICATIONS:**

<b>Input</b> .....	24, 48, 110, 220 VAC ±15% (50/60 Hz)
<b>Maximum power consumption</b> .....	24 VAC: 1.5 VA 48 VAC: 1.7 VA 110 VAC: 2 VA 220 VAC: 2 VA
<b>Output</b> .....	SPDT relay
<b>Contact material</b> .....	AgCdO
<b>Maximum loading</b> .....	10A AC resistive    8A DC inductive
<b>Maximum switching voltage</b> .....	250 VAC            250 VDC
<b>Relay maximum power rating</b> .....	2500 VA            80 W
<b>Mechanical life of relay</b> .....	3 x 10 <sup>7</sup> operations
<b>Electrical life of relay</b> .....	2 x 10 <sup>6</sup> at 2200 VA resistive load
<b>Probe isolation</b> .....	Electrodes: 2000 VAC
<b>Probe sensitivity</b> .....	4.7 K to 100 K ohms
<b>Probe voltage</b> .....	24 VAC, 60 Hz
<b>Probe current</b> .....	2 mA max.
<b>Operating temperature</b> .....	+14°F to 140°F    -10°C to +60°C
<b>Weight</b> .....	4.6 oz. (130g)

**WIRING DIAGRAM:**



**ORDERING INFORMATION:**



Products and specifications subject to change without notice.

Order/Technical Support – Tel: (800) 677-5311 / FAX: (800) 677-3865 / www.crouzet-usa.com