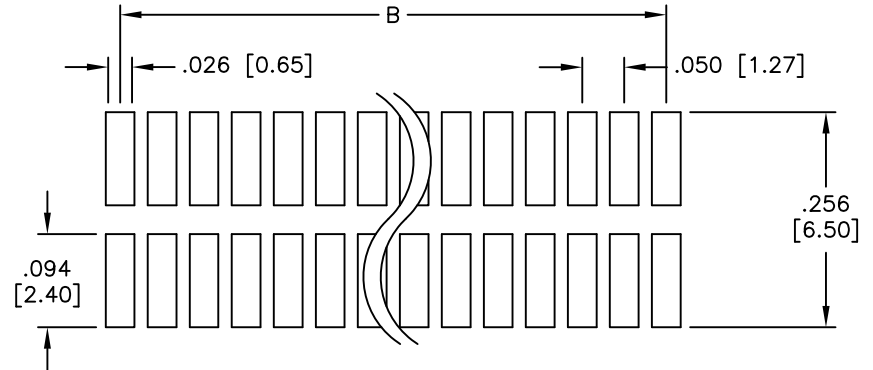
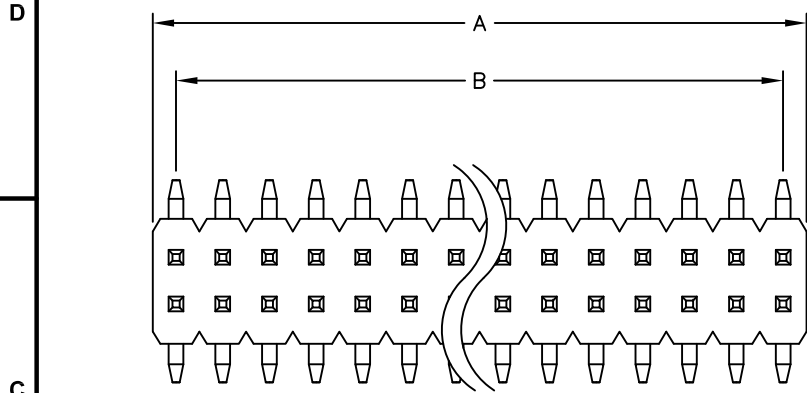
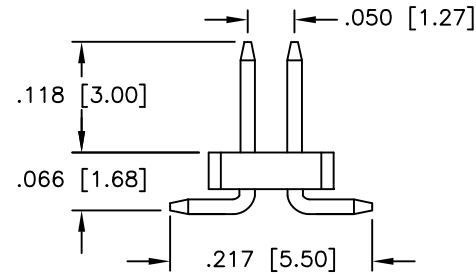
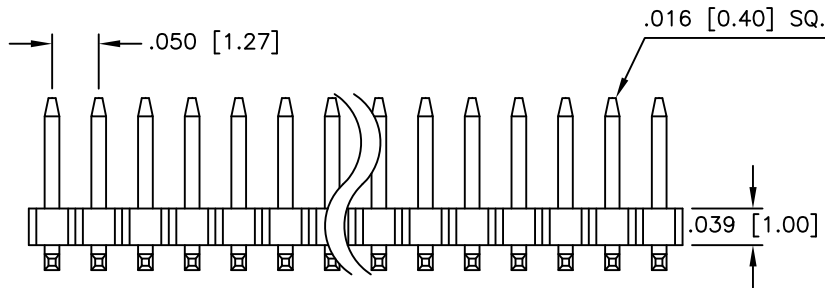


APPROVED: _____
 DATE: _____ TITLE: _____

Rev	AWO #	Description	Date	Appr
-		RELEASED	2/23/10	



Recommended PCB Layout



SPECIFICATIONS:

Material:
 Insulator: Hi-temp thermoplastic, glass reinforced, rated UL 94V-0
 Insulator color: Black
 Contacts: Brass
 Plating:
 Gold flash over Nickel underplate overall.
 Electrical:
 Operating voltage: 250 VAC max
 Current rating: 3 Amps max
 Contact resistance: 20 mohms max
 Insulation resistance: 5,000 Mohms min @ 500 VDC
 Dielectric withstanding voltage: 1,000 VAC for 1 minute
 Temperature Rating:
 Operating temperature: -55°C to +105°C
 Environmental:
 Lead free, RoHS compliant



Positions: 8 thru 100

A = .050 [1.27] x No. of Positions per Row
 B = .050 [1.27] x No. of Spaces

UNLESS OTHERWISE SPECIFIED ALL DIMENSIONS ARE INCHES [MM] TOLERANCES: EXCEPT AS NOTED		ADAM TECH 909 Rahway Avenue, Union, NJ 07083 Phone: 908-687-5000 Fax: 908-687-5710	
INCHES HOLES .X ± .10 Ø.X ± .10 .XX ± .020 Ø.XX ± .015 .XXX ± .015 Ø.XXX ± .010			
APPROVALS		TITLE	
DRAWN	DY	.050 [1.27] DUAL ROW PIN HEADER, SMT, GOLD PLATED	
CHECKED		DATE	
APPROVED		DATE	2/23/10
SIZE	PART NO.	REV.	
X	HPH2-A-XX-UA-SMT	-	
REF:	SCALE: NTS	SHEET 1 OF 1	