

CT5 modular Signal tower

- Cost-optimised modular 50 mm Ø signal tower
- for classic 24V DC applications in industry
- Up to 5 positions possible
- Low soiling due to flat-flush smooth exterior design
- Maximum product availability due to minimum number of articles (only 23 order numbers)
- LED multifunction and LED continuous light modules in 6 colours
- Efficient sound module selectable up to 95 dB – 8 tones
- Optimised ‘resilient’ bayonet system enables high stability, even without sealing rings
- five-pole M12 base with automatic contacting push-in system
- All common mounting types

TECHNICAL DATA

Housing	Ø 50 mm, black (RAL 9005)
Lens	Polycarbonate, ribbed inside
Type of mounting	horizontal, vertical, Tube mounting or NPT 1/2"
Beacon type	LED steady light, flashing light, strobe light and double strobe light
Light source	LEDs
Tone	see tone table
Volume	95 dB
Duty cycle	100 %
Service life	Light source: 100.000 h
Number of possible modules	max. 5
Operating temperature	30 °C / +60 °C
Operating temperature	-30°C / +60°C
Degree of protection	IP65 & UL Type 4/4x/13
Impact resistance	IK07
Weight (modules)	26-149 g



CT5 pre-assembled Signal towers



Order no.: CT5-Q01
Colours: red/amber/green
Function: LED steady beacon
Nominal voltage: 24 V DC
Type of mounting: Tube mounting
(100 mm tube length)

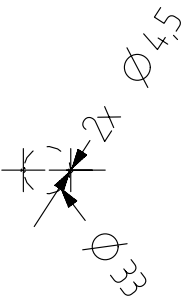
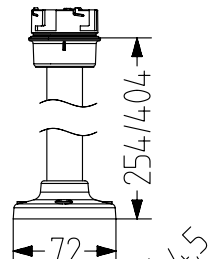
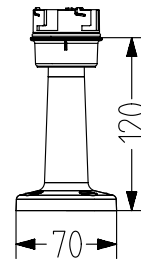
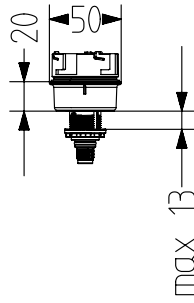
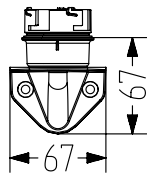
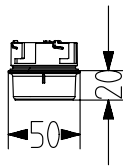
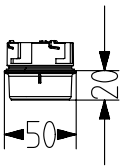
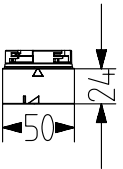
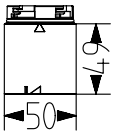
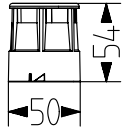
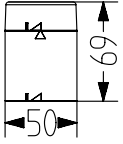


Order no.: CT5-Q02
Colours: red/green
Function: LED steady beacon
Nominal voltage: 24 V DC
Type of mounting: Tube mounting
(100 mm tube length)

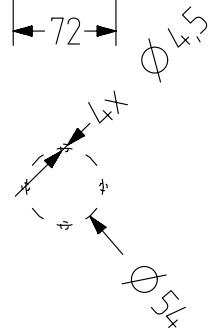
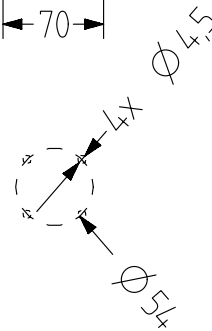
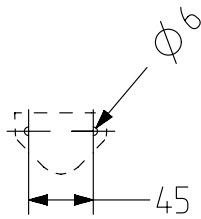


Order no.: CT5-Q05
Colours: red/amber/green/blue
Function: LED steady beacon
Nominal voltage: 24 V DC
Type of mounting: Tube mounting
(100 mm tube length)

CT5 Dimension Drawing



STANDARD
NPT TUBE



CT5 Order numbers



LIGHT MODULES

Type	Product	orange	red	clear	blue	green	yellow
CT5DC	LED continuous light module	915 011 005	915 012 005	915 014 005	915 015 005	915 016 005	915 017 005
CT5DF	LED multifunctional module	915 021 005	915 022 005	915 024 005	915025005	915 026 005	915 027 005



SOUND MODULES

Type	Product	Description	Article number
CT5ZM	Top Piezo Summer Module	one of eight tones can be selected with a dip switch	915 510 005



BASES

Type	Product	Article number
CT5MW	Base for horizontal and external tube mounting suitable for Ø 25mm tubes	915 710 900
CT5MC5	Base with integrated M12 five-pin connector	915 781 005
CT5NPT	Base for NPT 1/2" conduit mounting	915 715 900
CT5MV	Base for vertical mounting, with closed cable insertion	915 730 900
CT5KR1	Tube base on 100 mm plastic tube with integrated foot	915 742 910
CT5MR2	Tube base on 250 mm aluminium tube with plastic foot	915 743 900
CT5MR3	Tube base on 400 mm aluminium tube with plastic foot	915 744 900
CT5MC5IO	IO-Link base with 5-pin M12 connector	915 781 781
CT5KR1IO	IO-Link tube base 100 mm with terminal	915 742 742



ACCESSORIES

Type	Product	Description	Article number
CT5SK	Screw set for external tube mounting	two mounting screws and one seal for external tube mounting of the base CT5MW	915 710 910
CT5BR	Metal bracket for external cable insertion	for use with base CT5NPT and cable connection CKV as cable relief	915 735 900
WM22	Metal bracket for products with M22 mounting thread	for base CT5MC5 and M22 products	812 100 900
XWR	Plastic bracket for vertical mounting of tubes with a plastic base	for all tubes with a plastic base, incl. mounting screws	900 600 900
BDW	Junction box for horizontal mounting, M20, incl. mounting screws	for all tubes with a plastic base, for lateral cable insertion	841 501 900
BDV	Junction box for vertical mounting, M20	for all tubes with plastic base, for lateral cable insertion, separate screw set to match signal tower	841 511 900
BDM	Junction box for magnet mounting, M20	for all tubes with plastic base, for lateral cable insertion, separate screw set to match signal tower	841 521 900
SKE	Screw set for junction boxes	for mounting of PC7, CT5, ECO70/60/40 and Compact70 tube feet on BDV and BDM junction boxes	841 000 900
CKV	Cable connection NPT 1/2"	for use with CT5NPT	698 800 045