



Main

Range of Product	Altivar
Product or Component Type	EMC input filter
Range Compatibility	Lexium 05 Altivar 312 Solar Altivar 312 Altivar Machine ATV320
Product compatibility	ATV312H018M3 ATV312H037M3 ATV312H055M3 ATV312H075M3 LXM05AD10M3X LXM05BD10M3X Variable speed drive ATV320...C0.18 kW, 200...240 V three phase Variable speed drive ATV320...C0.37 kW, 200...240 V three phase Variable speed drive ATV320...C0.55 kW, 200...240 V three phase Variable speed drive ATV320...C0.75 kW, 200...240 V three phase
Product Specific Application	Radio interference input filter
Line Rated Current	7 A
Thermal losses	2.6 W ATV31H018M3X
Phase	Three phase

Complementary

Maximum earth leakage current	7 mA 50 Hz
Power supply voltage	200...240 V
Tolerance	10 %
Net Weight	1.43 Lb(US) (0.65 kg) 1.21 lb(US) (0.55 kg)

Environment

IP degree of protection	IP20 IP41 upper part)
Relative humidity	0...93 % IEC 68-2-3
Ambient air temperature for operation	14...122 °F (-10...50 °C)
Ambient Air Temperature for Storage	-13...158 °F (-25...70 °C)
Operating altitude	<= 3280.84 ft (1000 m) without current derating 3280.84...9842.52 ft (1000...3000 m) with current derating 1 % per 100 m
Vibration resistance	1 gn 13...150 Hz)IEC 60068-2-6 1.5 mm peak to peak 3...13 Hz)IEC 60068-2-6
Shock resistance	15 gn 11 ms EN/IEC 60068-2-27
Standards	EN 133200 EN/IEC 61800-3

The information provided in this documentation contains general descriptions and/or technical characteristics of the performance of the products contained herein. This documentation is not intended as a substitute for and is not to be used for determining suitability or reliability of these products for specific user applications. It is the duty of any such user or integrator to perform the appropriate and complete risk analysis, evaluation and testing of the products with respect to the relevant specific application or use thereof. Neither Schneider Electric Industries SAS nor any of its affiliates or subsidiaries shall be responsible or liable for misuse of the information contained herein.

Ordering and shipping details

Category	22154 - ATV320/ATV312/ATV32 ACCESSORIES
Discount Schedule	CP4B
GTIN	3389110689020
Nbr. of units in pkg.	1
Package weight(Lbs)	22.65 oz (642 g)
Returnability	No
Country of origin	TH

Packing Units

Unit Type of Package 1	PCE
Package 1 Height	1.97 in (5 cm)
Package 1 width	7.32 in (18.6 cm)
Package 1 Length	9.53 in (24.2 cm)
Unit Type of Package 2	S03
Number of Units in Package 2	7
Package 2 Weight	11.48 lb(US) (5.207 kg)
Package 2 Height	11.81 in (30 cm)
Package 2 width	11.81 in (30 cm)
Package 2 Length	15.75 in (40 cm)

Offer Sustainability

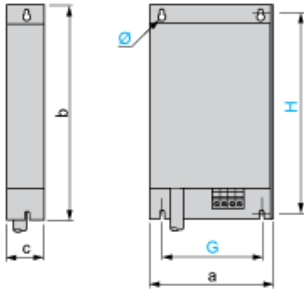
California proposition 65	WARNING: This product can expose you to chemicals including: Lead and lead compounds, which is known to the State of California to cause cancer and birth defects or other reproductive harm. For more information go to www.P65Warnings.ca.gov
REACH Regulation	REACH Declaration
REACH free of SVHC	Yes
EU RoHS Directive	Pro-active compliance (Product out of EU RoHS legal scope) EU RoHS Declaration
Toxic heavy metal free	Yes
Mercury free	Yes
RoHS exemption information	Yes
China RoHS Regulation	China RoHS Declaration

Contractual warranty

Warranty	18 months
----------	-----------

Additional EMC Input Filters

Dimensions



Dimensions in mm

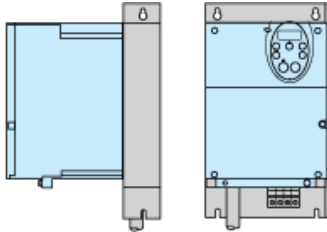
a	b	c	G	H	Ø
72	195	37	52	180	4.5

Dimensions in in.

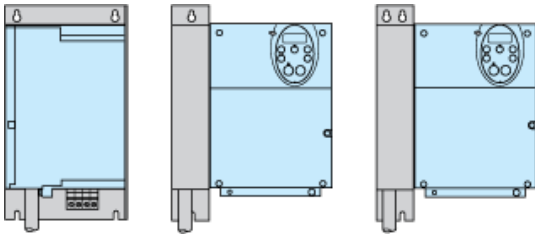
a	b	c	G	H	Ø
2.83	7.68	1.46	2.05	7.09	0.18

Additional EMC Input Filter

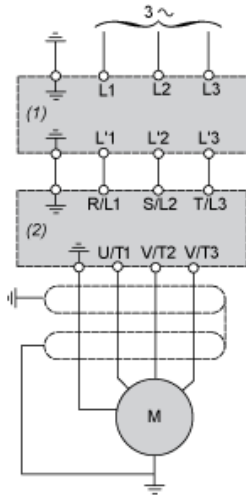
Mounting the Filter under the Drive



Mounting the Filter next to the Drive



Recommended Schema



- (1) Filter
- (2) Drive