

Coding pins for removable terminals of the SIRIUS devices in industrial standard mounting rail enclosure



| | |
|-------------------------------|--|
| product brand name | SIRIUS |
| product category | Further accessories |
| product designation | Coding pins for removable terminals |
| design of the product | For mechanical coding of the terminals |
| Substance Prohibitance (Date) | 03/01/2017 |

Further information

Information- and Downloadcenter (Catalogs, Brochures,...)

<https://www.siemens.com/ic10>

Industry Mall (Online ordering system)

<https://mall.industry.siemens.com/mall/en/en/Catalog/product?mlfb=3ZY1440-1AA00>

Cax online generator

<http://support.automation.siemens.com/WW/CAXorder/default.aspx?lang=en&mlfb=3ZY1440-1AA00>

Service&Support (Manuals, Certificates, Characteristics, FAQs,...)

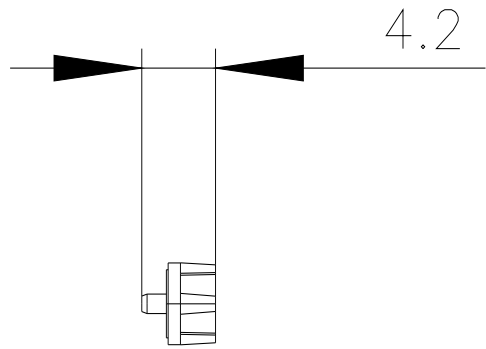
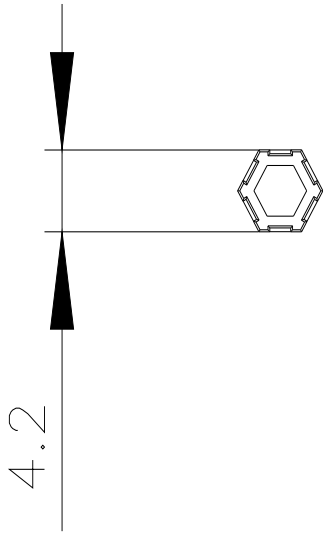
<https://support.industry.siemens.com/cs/ww/en/ps/3ZY1440-1AA00>

Image database (product images, 2D dimension drawings, 3D models, device circuit diagrams, EPLAN macros, ...)

http://www.automation.siemens.com/bilddb/cax_de.aspx?mlfb=3ZY1440-1AA00&lang=en

Characteristic: Derating

<https://support.industry.siemens.com/cs/ww/en/ps/3ZY1440-1AA00/manual>



last modified:

1/18/2021 