

NuMicro[®] Family
Arm[®] Cortex[®] -M23-based Microcontroller

NuMaker-M258KG
User Manual

Evaluation Board for NuMicro[®] M254/256/258 Series

The information described in this document is the exclusive intellectual property of Nuvoton Technology Corporation and shall not be reproduced without permission from Nuvoton.

Nuvoton is providing this document only for reference purposes of NuMicro microcontroller and microprocessor based system design. Nuvoton assumes no responsibility for errors or omissions.

All data and specifications are subject to change without notice.

For additional information or questions, please contact: Nuvoton Technology Corporation.

www.nuvoton.com

Table of Contents

1 OVERVIEW 7

2 FEATURES 8

3 HARDWARE CONFIGURATION 9

 3.1 Front View..... 9

 3.2 Rear View 10

 3.3 Extension Connectors..... 11

 3.3.1 Pin Assignment for Extension Connectors11

 3.3.2 NuMaker-TNLCDSUB_M258K Compatible Extension Connectors16

 3.3.3 Arduino UNO Compatible Extension Connectors18

 3.4 Power Supply Configuration 20

 3.4.1 VIN Power Source20

 3.4.2 5 V Power Sources20

 3.4.3 3.3 V Power Sources21

 3.4.4 1.8 V Power Sources21

 3.4.5 Power Connectors.....21

 3.4.6 USB Connectors22

 3.4.7 Power Switches22

 3.4.8 Power Supply Models22

 3.5 External Reference Voltage Connector..... 26

 3.6 Battery Voltage (V_{BAT}) Connector 26

 3.7 Ammeter Connector 26

 3.8 Touch Key 26

 3.9 Push Buttons 27

 3.10 LEDs 28

 3.11 LCD Panel 28

 3.12 Nu-Link2-Me 30

 3.12.1 VCOM Switches.....30

 3.12.2 Status LEDs31

4 QUICK START 32

 4.1 Toolchains Supporting 32

 4.2 Nuvoton Nu-Link Driver Installation 32

 4.3 BSP Firmware Download 34

 4.4 Hardware Setup 34

 4.5 Find the Example Project 36

 4.6 Execute the Project under Toolchains 36

4.6.1 Keil MDK.....36

4.6.2 IAR EWARM.....40

4.6.3 NuEclipse.....41

5 NUMAKER-M258KG SCHEMATICS 48

5.1 Nu-Link2-Me..... 48

5.2 M258KG Target Board..... 49

5.3 Extension Connectors..... 50

5.4 Touch Key 51

5.5 PCB Placement 52

6 REVISION HISTORY 53

List of Figures

Figure 1-1 NuMaker-M258KG Evaluation Board 7

Figure 3-1 Front View of NuMaker-M258KG 9

Figure 3-2 Rear View of NuMaker-M258KG 10

Figure 3-3 M258KG6AE Extension Connectors 11

Figure 3-4 Arduino UNO Compatible Extension Connectors..... 18

Figure 3-5 External Power Supply Sources on Nu-Link2-Me 22

Figure 3-6 External Power Supply Sources on M258KG Target Board..... 23

Figure 3-7 Detach the Nu-Link2-Me from NuMaker-M258KG 24

Figure 3-8 Wiring between Ammeter Connector and Ammeter..... 26

Figure 3-9 LCD Digit Mapping Table 28

Figure 4-1 Nu-Link USB Driver Installation Setup..... 32

Figure 4-2 Nu-Link USB Driver Installation 33

Figure 4-3 Open VCOM Function 34

Figure 4-4 ICE USB Connector..... 34

Figure 4-5 Device Manger..... 35

Figure 4-6 PuTTY Session Setting..... 35

Figure 4-7 Template Project Folder Path..... 36

Figure 4-8 Warning Message of “Device not found” 36

Figure 4-9 Project File Migrate to Version 5 Format..... 37

Figure 4-10 Debugger Setting in Options Window..... 37

Figure 4-11 Programming Setting in Options Window..... 38

Figure 4-12 Compile and Download the Project 38

Figure 4-13 Keil MDK Debug Mode 39

Figure 4-14 Debug Message on Serial Port Terminal Windows..... 39

Figure 4-15 IAR EWARM Window 40

Figure 4-16 Compile and Download the Project 40

Figure 4-17 IAR EWARM Debug Mode 41

Figure 4-18 Debug Message on Serial Port Terminal Windows..... 41

Figure 4-19 Import the Project in NuEclipse 42

Figure 4-20 Import Projects Windows..... 42

Figure 4-21 Open Project Properties Window 43

Figure 4-22 Project Properties Settings 43

Figure 4-23 Build Project..... 44

Figure 4-24 Open Debug Configuration..... 44

Figure 4-25 Main Tab Configuration 45

Figure 4-26 Debugger Tab Configuration 45

Figure 4-27 Startup Tab Configuration 46

Figure 4-28 NuEclipse Debug Mode 47

Figure 4-29 Debug Message on Serial Port Terminal Windows..... 47

Figure 5-1 Nu-Link2-Me Circuit 48

Figure 5-2 M258KG Target Board Circuit 49

Figure 5-3 Extension Connectors Circuit 50

Figure 5-4 Touch Key Circuit 51

Figure 5-5 Front Placement 52

Figure 5-6 Rear Placement 52

List of Tables

Table 3-1 Extension Connectors..... 11

Table 3-2 M258KG6AE Full-pin Extension Connectors and GPIO Function List 15

Table 3-3 NuMaker-TNLCDSUB_M258K Extension Connectors and M258KG6AE Mapping GPIO List..... 17

Table 3-4 Arduino UNO Extension Connectors and M258KG6AE Mapping GPIO List 19

Table 3-5 Vin Power Source 20

Table 3-6 5 V Power Sources 20

Table 3-7 3.3 V Power Sources 21

Table 3-8 1.8 V Power Sources 21

Table 3-9 Power Connectors 21

Table 3-10 USB Connectors 22

Table 3-11 Power Switches 22

Table 3-12 Supply External Power through Nu-Link2-Me 23

Table 3-13 Supply External Power for M258KG Target Board..... 25

Table 3-14 External Reference Voltage Connector 26

Table 3-15 Battery Voltage Connector..... 26

Table 3-16 Ammeter Connector..... 26

Table 3-17 Touch Key..... 27

Table 3-18 Push Buttons..... 27

Table 3-19 LEDs 28

Table 3-20 LCD Specifications..... 29

Table 3-21 LCD Pin Mapping Table..... 30

Table 3-22 VCOM Function of Nu-Link2-Me..... 30

Table 3-23 Operation Status LED Patterns 31

1 OVERVIEW

The NuMaker-M258KG is an evaluation board for Nuvoton NuMicro M258KG, M258SG, and M258QG microcontrollers with COM/SEG LCD driver, USB 2.0 FS device and capacitive touch key sensing function. The NuMaker-M258KG consists of two parts: an M258KG target board and an on-board Nu-Link2-Me debugger and programmer. The NuMaker-M258KG is designed for project evaluation, prototype development and validation with power consumption monitoring function.

The M258KG target board is based on NuMicro M258KG6AE to evaluate the capacitive touch key sensing function on TK14 with message display on 8 x 40 HTN-LCD panel for Human Machine Interface application. For the development flexibility, the M258KG target board provides the extension connectors, the Arduino UNO compatible headers and the capability of adopting multiple power supplies. Furthermore, the Nuvoton-designed ammeter connector can measure the power consumption instantly, which is essential for the prototype evaluation.

In addition, there is an attached on-board debugger and programmer “Nu-Link2-Me”. The Nu-Link2-Me supports on-chip debugging, online and offline ICP programming via SWD interface. The Nu-Link2-Me supports virtual COM (VCOM) port for printing debug messages on PC. Besides, the programming status could be shown on the built-in LEDs. Lastly, the Nu-Link2-Me could be detached from the evaluation board and become a stand-alone mass production programmer.

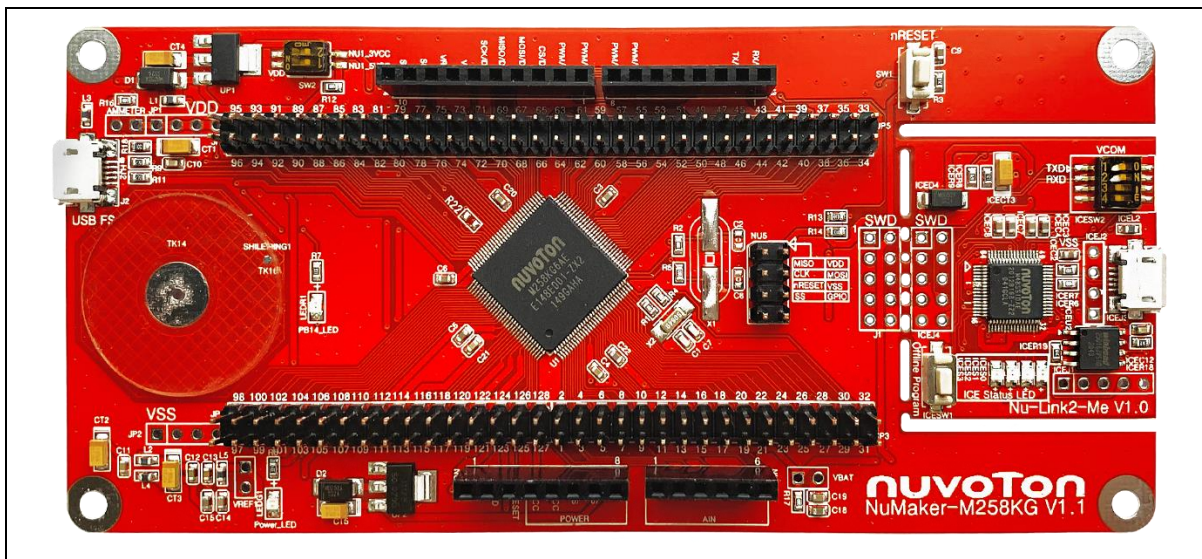


Figure 1-1 NuMaker-M258KG Evaluation Board

2 FEATURES

- NuMicro M258KG6AE used as main microcontroller with function compatible with:
 - M258KG6AE
 - M258SG6AE
 - M258QG6AE
- M258KG6AE full pins extension connectors
 - HTN-LCD panel board can be plugged into extension connectors
- Arduino UNO compatible extension connectors
- Ammeter connector for measuring the microcontroller's power consumption
- Flexible board power supply:
 - External V_{DD} power connector
 - Arduino UNO compatible extension connector V_{in}
 - USB FS connector on M258KG target board
 - ICE USB connector on Nu-Link2-Me
- Supports one touch key on board
 - Equipped with 1 touch key + reference pad + shielding electrode
 - Touch development tool can set the hardware and software parameters automatically
- Supports 8 x 40 COM/SEG HTN-LCD panel on NuMaker-TNLCDSUB_M258K
 - 1/4 bias, 1/8 duty, 8 x 40 COM/SEG
- On-board Nu-Link2-Me debugger and programmer:
 - Debug through SWD interface
 - Online/offline programming
 - Virtual COM port function

3 HARDWARE CONFIGURATION

3.1 Front View

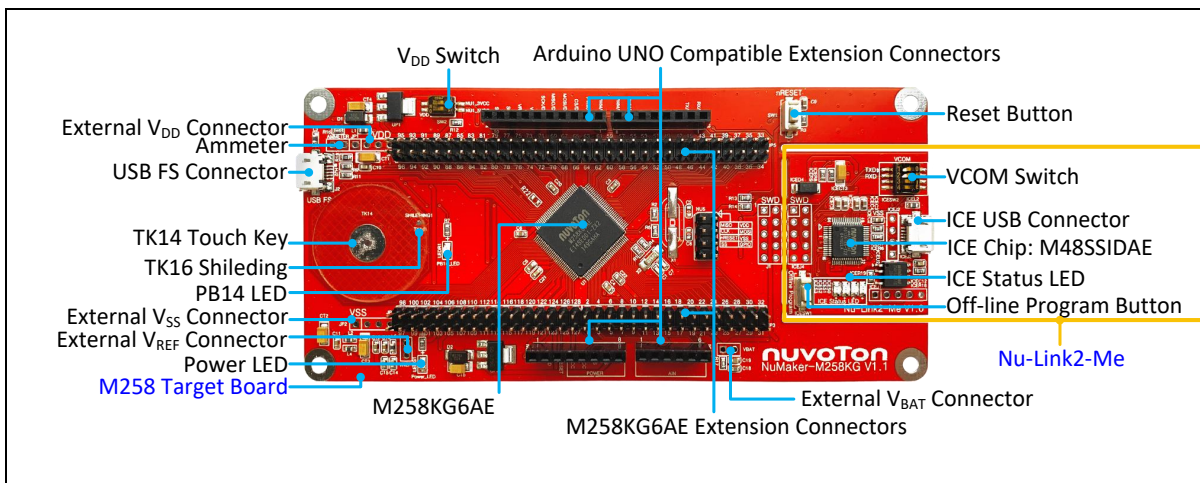


Figure 3-1 Front View of NuMaker-M258KG

Figure 3-1 shows the main components and connectors from the front side of NuMaker-M258KG. The following lists components and connectors from the front view:

- Target chip: M258KG6AE (U1)
- USB FS Connector (J2)
- Arduino UNO Compatible Extension Connectors (NU1, NU2, NU3, NU4)
- M258 Extension Connectors (JP3, JP4, JP5 and JP6)
- External V_{DD} Power Connector (JP1)
- External V_{SS} Power Connector (JP2)
- External V_{REF} Connector (VREF1)
- External V_{BAT} Connector (VBAT)
- V_{DD} Switch (SW2)
- Ammeter Connector (AMMETER)
- Reset Button (SW1)
- Power LED and PB14 LED (LEDG1 and LEDR1)
- Nu-Link2-Me
 - VCOM Switch
 - ICE Chip: M48SSIDAE (ICEU2)
 - ICE USB Connector (ICEJ3)
 - ICE Status LED (ICES0, ICES1, ICES2, ICES3)
 - Off-line Program Button (ICESW1)

3.2 Rear View

Figure 3-2 shows the main components and connectors from the rear side of NuMaker-M258KG.

The following lists components and connectors from the rear view:

- Nu-Link2-Me
 - MCUVCC Power Switch (ICEJPR1)
 - ICEVCC Power Switch (ICEJPR2)

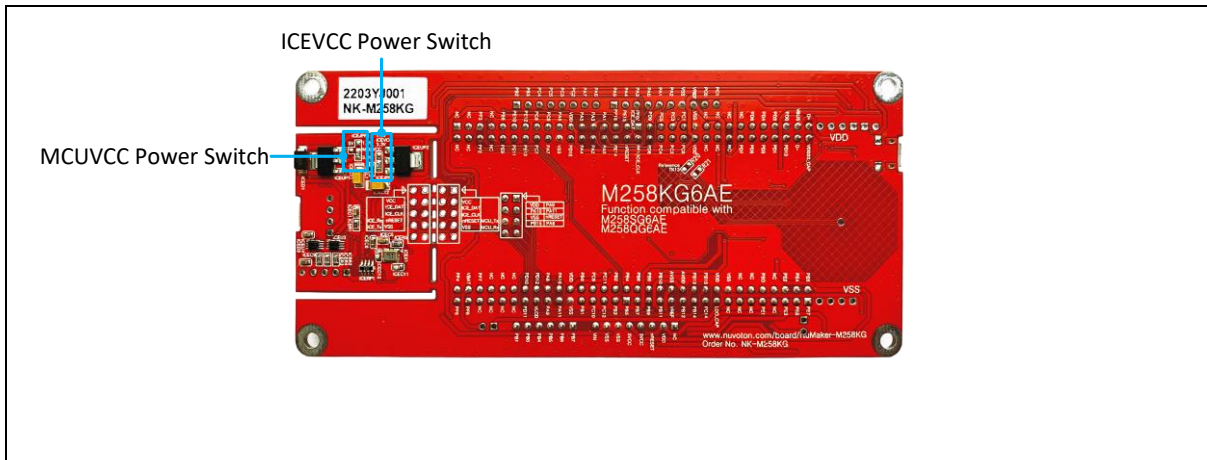


Figure 3-2 Rear View of NuMaker-M258KG

3.3 Extension Connectors

Table 3-1 presents the extension connectors.

Connector	Description
JP3, JP4, JP5 and JP6	Full pins extension connectors on the NuMaker-M258KG.
NU1, NU2, NU3 and NU4	Arduino UNO compatible pins on the NuMaker-M258KG.

Table 3-1 Extension Connectors

3.3.1 Pin Assignment for Extension Connectors

The NuMaker-M258KG provides the M258KG6AE onboard and extension connectors (JP3, JP4, JP5 and JP6). Figure 3-3 shows the M258KG6AE extension connectors.

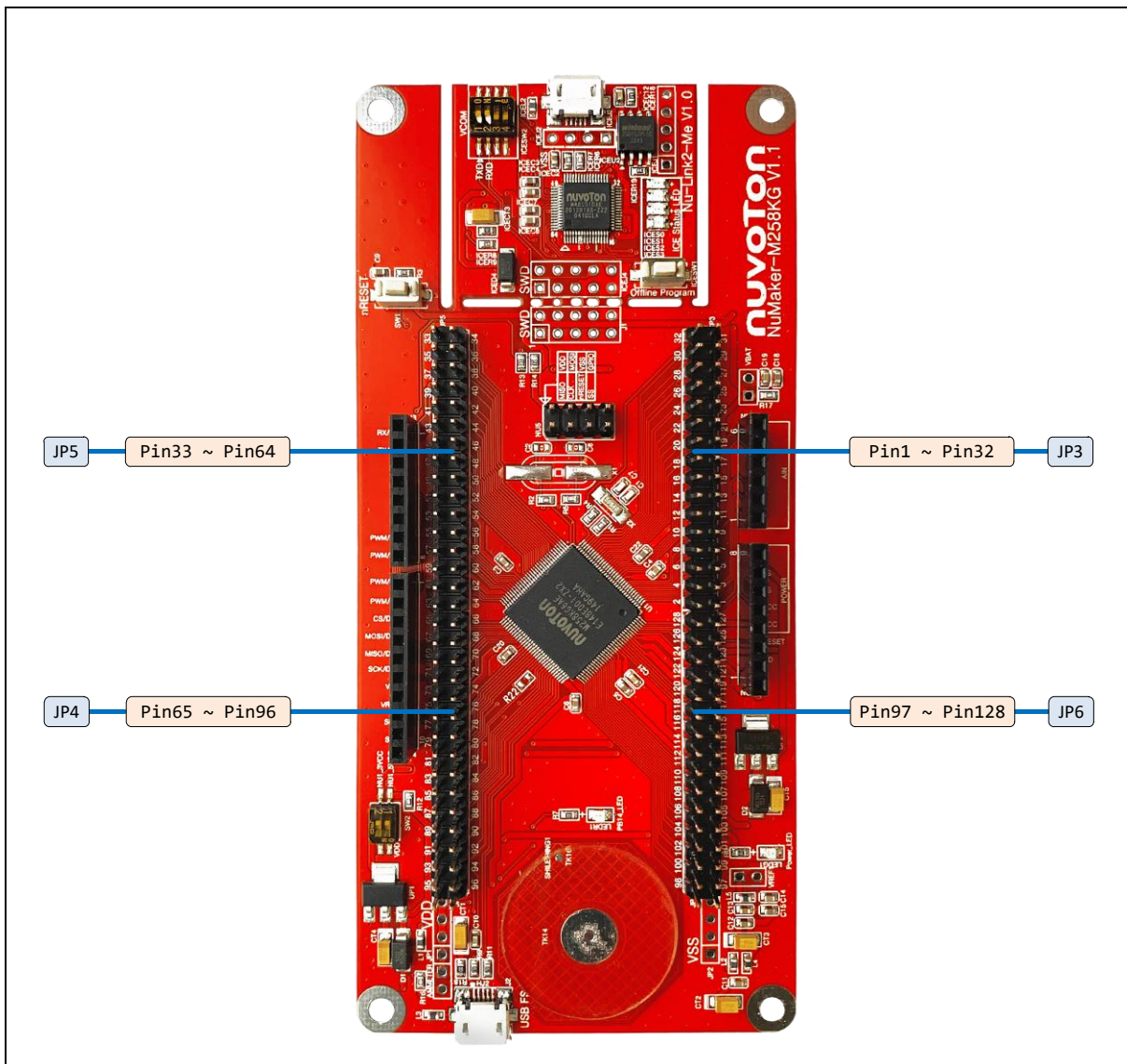


Figure 3-3 M258KG6AE Extension Connectors

Header		M258KG6AE	
		Pin No.	Function
JP3	JP3.1	1	PB.5/EADC0_CH5/ACMP1_N/LCD_COM0/I2C0_SCL/SPI1_MISO/USCI1_CTL0/SC0_CLK/UART2_TXD/TM0/INT0
	JP3.2	2	PB.4/EADC0_CH4/ACMP1_P1/LCD_COM1/I2C0_SDA/SPI1_MOSI/USCI1_CTL1/SC0_DAT/UART2_RXD/TM1/INT1
	JP3.3	3	PB.3/EADC0_CH3/ACMP0_N/I2C1_SCL/LCD_COM2/UART1_TXD/SPI1_CLK/USCI1_DAT1/SC0_RST/TM2/INT2
	JP3.4	4	PB.2/EADC0_CH2/ACMP0_P1/I2C1_SDA/LCD_COM3/UART1_RXD/SPI1_SS/USCI1_DAT0/SC0_PWR/TM3/INT3
	JP3.5	5	PC.12/UART0_TXD/I2C0_SCL/SC0_nCD/ACMP0_O
	JP3.6	6	PC.11/UART0_RXD/I2C0_SDA/ACMP1_O
	JP3.7	7	PC.10/LCD_SEG3/UART3_TXD
	JP3.8	8	PC.9/LCD_SEG2/UART3_RXD
	JP3.9	9	PB.1/EADC0_CH1/LCD_SEG1/SPI1_I2SMCLK/UART2_TXD/I2C1_SCL
	JP3.10	10	PB.0/EADC0_CH0/LCD_SEG0/UART2_RXD/SPI0_I2SMCLK/I2C1_SDA
	JP3.11	11	V _{SS}
	JP3.12	12	V _{DD}
	JP3.13	13	PA.11/ACMP0_P0/USCI0_CLK/BPWM0_CH0/TM0_EXT/DAC1_ST
	JP3.14	14	PA.10/ACMP1_P0/USCI0_DAT0/BPWM0_CH1/TM1_EXT/DAC0_ST
	JP3.15	15	PA.9/USCI0_DAT1/UART1_TXD/BPWM0_CH2/TM2_EXT
	JP3.16	16	PA.8/USCI0_CTL1/UART1_RXD/BPWM0_CH3/TM3_EXT/INT4
	JP3.17	17	V _{LCD}
	JP3.18	18	PD.12/UART2_RXD/TK_SE/CLKO/EADC0_ST/INT5
	JP3.19	19	PD.11/UART1_TXD/LCD_SEG43/LCD_COM4
	JP3.20	20	PD.10/UART1_RXD/LCD_SEG42/LCD_COM5
	JP3.21	21	NC
	JP3.22	22	NC
	JP3.23	23	NC
	JP3.24	24	NC
	JP3.25	25	NC
	JP3.26	26	NC
	JP3.27	27	NC
	JP3.28	28	PF.7/SC0_DAT/SPI0_MISO
	JP3.29	29	PF.6/SC0_CLK/SPI0_MOSI
	JP3.30	30	V _{BAT}
	JP3.31	31	PF.5/UART2_RXD/UART2_nCTS/BPWM0_CH4/X32_IN/EADC0_ST
	JP3.32	32	PF.4/UART2_TXD/UART2_nRTS/BPWM0_CH5/X32_OUT

Header		M258KG6AE	
		Pin No.	Function
JP5	JP5.1	33	NC
	JP5.2	34	NC
	JP5.3	35	NC
	JP5.4	36	NC
	JP5.5	37	PF.3/UART0_TXD/I2C0_SCL/XT1_IN/BPWM1_CH0
	JP5.6	38	PF.2/UART0_RXD/I2C0_SDA/XT1_OUT/BPWM1_CH1
	JP5.7	39	NC
	JP5.8	40	NC
	JP5.9	41	PE.8/LCD_SEG20/LCD_COM0/USCI1_CTL1
	JP5.10	42	PE.9/LCD_SEG19/LCD_COM1/USCI1_CTL0/UART2_RXD
	JP5.11	43	PE.10/LCD_SEG18/LCD_COM2/USCI1_DAT0/UART3_TXD
	JP5.12	44	PE.11/LCD_SEG17/LCD_COM3/USCI1_DAT1/UART3_RXD/UART1_nCTS
	JP5.13	45	PE.12/USCI1_CLK/UART1_nRTS
	JP5.14	46	PE.13/I2C0_SCL/LCD_SEG41/LCD_COM6/UART1_TXD/BPWM1_CH5
	JP5.15	47	PC.8/I2C0_SDA/LCD_SEG40/LCD_COM7/UART1_RXD/BPWM1_CH4
	JP5.16	48	PC.7/SPI1_MISO/LCD_SEG39/TK_TK17/UART0_nCTS/I2C1_SMBAL/BPWM1_CH0/TM0/INT3
	JP5.17	49	PC.6/SPI1_MOSI/LCD_SEG38/TK_TK18/UART0_nRTS/I2C1_SMBSUS/BPWM1_CH1/TM1/INT2
	JP5.18	50	PA.7/SPI1_CLK/LCD_SEG37/TK_TK19/UART0_TXD/I2C1_SCL/BPWM1_CH2/ACMP0_WLAT/TM2/INT1
	JP5.19	51	PA.6/SPI1_SS/LCD_SEG36/TK_TK20/UART0_RXD/I2C1_SDA/BPWM1_CH3/ACMP1_WLAT/TM3/INT0
	JP5.20	52	V _{SS}
	JP5.21	53	V _{DD}
	JP5.22	54	PD.15/TK_TK0/TM3/INT1
	JP5.23	55	PA.5/SPI1_I2SMCLK/TK_TK1/UART0_nCTS/UART0_TXD/I2C0_SCL/BPWM0_CH5
	JP5.24	56	PA.4/SPI0_I2SMCLK/TK_TK2/SC0_nCD/UART0_nRTS/UART0_RXD/I2C0_SDA/BPWM0_CH4
	JP5.25	57	PA.3/SPI0_SS/TK_TK3/SC0_PWR/I2C0_SMBAL/UART1_TXD/I2C1_SCL/BPWM0_CH3/CLKO
	JP5.26	58	PA.2/SPI0_CLK/TK_TK4/SC0_RST/I2C0_SMBSUS/UART1_RXD/I2C1_SDA/BPWM0_CH2
	JP5.27	59	PA.1/SPI0_MISO/TK_TK5/SC0_DAT/UART0_TXD/UART1_nCTS/BPWM0_CH1/DAC1_ST
	JP5.28	60	PA.0/SPI0_MOSI/TK_TK6/SC0_CLK/UART0_RXD/UART1_nRTS/BPWM0_CH0/DAC0_ST
	JP5.29	61	PF.15/LCD_SEG35/TK_TK7/TM2/CLKO/INT4
	JP5.30	62	PE.14/UART2_TXD/LCD_SEG34/TK_TK8
	JP5.31	63	PE.15/UART2_RXD/TK_TK21
	JP5.32	64	nRESET
JP4	JP4.1	65	PF.0/UART1_TXD/I2C1_SCL/UART0_TXD/BPWM1_CH0/ICE_DAT
	JP4.2	66	PF.1/UART1_RXD/I2C1_SDA/UART0_RXD/BPWM1_CH1/ICE_CLK

Header	M258KG6AE		
	Pin No.	Function	
JP4.3	67	PD.9/UART2_nCTS/LCD_SEG33/TK_TK22	
JP4.4	68	PD.8/UART2_nRTS/LCD_SEG32/TK_TK23	
JP4.5	69	PC.5/LCD_SEG31/LCD_COM4/TK_TK9/UART2_TXD/I2C1_SCL	
JP4.6	70	PC.4/LCD_SEG30/LCD_COM5/TK_TK10/SPI1_I2SMCLK/UART2_RXD/I2C1_SDA	
JP4.7	71	PC.3/LCD_SEG29/LCD_COM6/TK_TK11/SPI1_MISO/UART2_nRTS/I2C0_SMBAL/UART3_TXD	
JP4.8	72	PC.2/LCD_SEG28/LCD_COM7/TK_TK12/SPI1_MOSI/UART2_nCTS/I2C0_SMBSUS/UART3_RXD	
JP4.9	73	PC.1/LCD_SEG27/LCD_COM2/TK_TK24/SPI1_CLK/UART2_TXD/I2C0_SCL/ACMP0_O	
JP4.10	74	PC.0/LCD_SEG26/LCD_COM3/TK_TK25/SPI1_SS/UART2_RXD/I2C0_SDA/ACMP1_O	
JP4.11	75	V _{SS}	
JP4.12	76	V _{DD}	
JP4.13	77	NC	
JP4.14	78	NC	
JP4.15	79	NC	
JP4.16	80	NC	
JP4.17	81	NC	
JP4.18	82	NC	
JP4.19	83	NC	
JP4.20	84	PD.7/UART1_TXD/I2C0_SCL/USCI1_CLK/TK_TK13/SPI1_MISO	
JP4.21	85	PD.6/UART1_RXD/I2C0_SDA/USCI1_DAT1/TK_TK14/SPI1_MOSI	
JP4.22	86	PD.5/I2C1_SCL/USCI1_DAT0/TK_TK15/SPI1_CLK	
JP4.23	87	PD.4/USCI0_CTL0/I2C1_SDA/USCI1_CTL1/TK_TK16/SPI1_SS	
JP4.24	88	PD.3/USCI0_CTL1/SPI0_SS/LCD_SEG25/USCI1_CTL0/TK_TK13/UART0_TXD/UART3_nRTS	
JP4.25	89	PD.2/USCI0_DAT1/SPI0_CLK/LCD_SEG24/TK_TK14/UART0_RXD/UART3_nCTS	
JP4.26	90	PD.1/USCI0_DAT0/SPI0_MISO/LCD_SEG23/TK_TK15/UART3_TXD	
JP4.27	91	PD.0/USCI0_CLK/SPI0_MOSI/LCD_SEG22/TK_TK16/UART3_RXD/TM2	
JP4.28	92	PD.13/SPI1_I2SMCLK/SPI0_I2SMCLK/LCD_SEG21	
JP4.29	93	USB_VBUS	
JP4.30	94	USB_D-	
JP4.31	95	USB_D+	
JP4.32	96	USB_VDD33_CAP	
JP6	JP6.1	97	PE.7/LCD_SEG16/BPWM0_CH5
	JP6.2	98	PE.6/LCD_SEG15/SC0_nCD/USCI0_CTL0/BPWM0_CH4
	JP6.3	99	PE.5/SC0_PWR/USCI0_CTL1/BPWM0_CH3
	JP6.4	100	PE.4/SC0_RST/USCI0_DAT1/BPWM0_CH2
	JP6.5	101	PE.3/SC0_DAT/USCI0_DAT0/BPWM0_CH1

Header	M258KG6AE	
	Pin No.	Function
JP6.6	102	PE.2/SC0_CLK/USCI0_CLK/BPWM0_CH0
JP6.7	103	NC
JP6.8	104	NC
JP6.9	105	PE.1/SPI0_MISO0/UART3_TXD/I2C1_SCL
JP6.10	106	PE.0/SPI1_MOSI/UART3_RXD/I2C1_SDA
JP6.11	107	NC
JP6.12	108	NC
JP6.13	109	NC
JP6.14	110	NC
JP6.15	111	NC
JP6.16	112	V _{SS}
JP6.17	113	LDO_CAP
JP6.18	114	V _{DD}
JP6.19	115	PC.14/SPI0_I2SMCLK/USCI0_CTL0/LCD_SEG14/LCD_COM0/TM1
JP6.20	116	PB.15/EADC0_CH15/SPI0_SS/USCI0_CTL1/UART0_nCTS/UART3_TXD/LCD_SEG13/LCD_COM1/TM0_EXT
JP6.21	117	PB.14/EADC0_CH14/SPI0_CLK/USCI0_DAT1/UART0_nRTS/UART3_RXD/LCD_SEG12/TM1_EXT/CLKO/TK_SE
JP6.22	118	PB.13/EADC0_CH13/DAC1_OUT/ACMP0_P3/ACMP1_P3/SPI0_MISO/USCI0_DAT0/UART0_TXD/UART3_nRTS/LCD_SEG11/TM2_EXT
JP6.23	119	PB.12/EADC0_CH12/DAC0_OUT/ACMP0_P2/ACMP1_P2/SPI0_MOSI/USCI0_CLK/UART0_RXD/UART3_nCTS/LCD_SEG10/TM3_EXT
JP6.24	120	AV _{DD}
JP6.25	121	V _{REF}
JP6.26	122	AV _{SS}
JP6.27	123	PB.11/EADC0_CH11/UART0_nCTS/I2C1_SCL/LCD_SEG9/SPI0_I2SMCLK/BPWM1_CH0
JP6.28	124	PB.10/EADC0_CH10/USCI1_CTL0/UART0_nRTS/I2C1_SDA/LCD_SEG8/LCD_V1/BPWM1_CH1
JP6.29	125	PB.9/EADC0_CH9/USCI1_CTL1/UART0_TXD/UART1_nCTS/I2C1_SMBAL/LCD_SEG7/LCD_V2/BPWM1_CH2
JP6.30	126	PB.8/EADC0_CH8/USCI1_CLK/UART0_RXD/UART1_nRTS/I2C1_SMBSUS/LCD_SEG6/LCD_V3/BPWM1_CH3
JP6.31	127	PB.7/EADC0_CH7/USCI1_DAT0/UART1_TXD/LCD_SEG5/BPWM1_CH4/INT5/ACMP0_O
JP6.32	128	PB.6/EADC0_CH6/USCI1_DAT1/UART1_RXD/LCD_SEG4/BPWM1_CH5/INT4/ACMP1_O

Table 3-2 M258KG6AE Full-pin Extension Connectors and GPIO Function List

3.3.2 NuMaker-TNLCDSUB_M258K Compatible Extension Connectors

Table 3-3 shows the NuMaker-TNLCDSUB_M258K compatible extension connectors.

Header		NuMaker-M258KG		NuMaker-TNLCDSUB_M258K
		Pin No.	Function	Function
JP3	JP3.1	1	LCD_COM0	LCD_COM0
	JP3.2	2	LCD_COM1	LCD_COM1
	JP3.3	3	LCD_COM2	LCD_COM2
	JP3.4	4	LCD_COM3	LCD_COM3
	JP3.7	7	LCD_SEG3	LCD_SEG3
	JP3.8	8	LCD_SEG2	LCD_SEG2
	JP3.9	9	LCD_SEG1	LCD_SEG1
	JP3.10	10	LCD_SEG0	LCD_SEG0
	JP3.19	19	LCD_COM4	LCD_COM4
	JP3.20	20	LCD_COM5	LCD_COM5
JP5	JP5.9	41	LCD_SEG20	LCD_SEG20
	JP5.10	42	LCD_SEG19	LCD_SEG19
	JP5.11	43	LCD_SEG18	LCD_SEG18
	JP5.12	44	LCD_SEG17	LCD_SEG17
	JP5.14	46	LCD_COM6	LCD_COM6
	JP5.15	47	LCD_COM7	LCD_COM7
	JP5.16	48	LCD_SEG39	LCD_SEG39
	JP5.17	49	LCD_SEG38	LCD_SEG38
	JP5.18	50	LCD_SEG37	LCD_SEG37
	JP5.19	51	LCD_SEG36	LCD_SEG36
	JP5.29	61	LCD_SEG35	LCD_SEG35
JP5.30	62	LCD_SEG34	LCD_SEG34	
JP4	JP4.3	67	LCD_SEG33	LCD_SEG33
	JP4.4	68	LCD_SEG32	LCD_SEG32
	JP4.5	69	LCD_SEG31	LCD_SEG31
	JP4.6	70	LCD_SEG30	LCD_SEG30
	JP4.7	71	LCD_SEG29	LCD_SEG29
	JP4.8	72	LCD_SEG28	LCD_SEG28

	JP4.9	73	LCD_SEG27	LCD_SEG27
	JP4.10	74	LCD_SEG26	LCD_SEG26
	JP4.24	88	LCD_SEG25	LCD_SEG25
	JP4.25	89	LCD_SEG24	LCD_SEG24
	JP4.26	90	LCD_SEG23	LCD_SEG23
	JP4.27	91	LCD_SEG22	LCD_SEG22
	JP4.28	92	LCD_SEG21	LCD_SEG21
JP6	JP6.1	97	LCD_SEG16	LCD_SEG16
	JP6.2	98	LCD_SEG15	LCD_SEG15
	JP6.19	115	LCD_SEG14	LCD_SEG14
	JP6.20	116	LCD_SEG13	LCD_SEG13
	JP6.21	117	LCD_SEG12	LCD_SEG12
	JP6.22	118	LCD_SEG11	LCD_SEG11
	JP6.23	119	LCD_SEG10	LCD_SEG10
	JP6.27	123	LCD_SEG9	LCD_SEG9
	JP6.28	124	LCD_SEG8	LCD_SEG8
	JP6.29	125	LCD_SEG7	LCD_SEG7
	JP6.30	126	LCD_SEG6	LCD_SEG6
	JP6.31	127	LCD_SEG5	LCD_SEG5
	JP6.32	128	LCD_SEG4	LCD_SEG4

Table 3-3 NuMaker-TNLCDSUB_M258K Extension Connectors and M258KG6AE Mapping GPIO List

3.3.3 Arduino UNO Compatible Extension Connectors

Figure 3-4 shows the Arduino UNO compatible extension connectors.

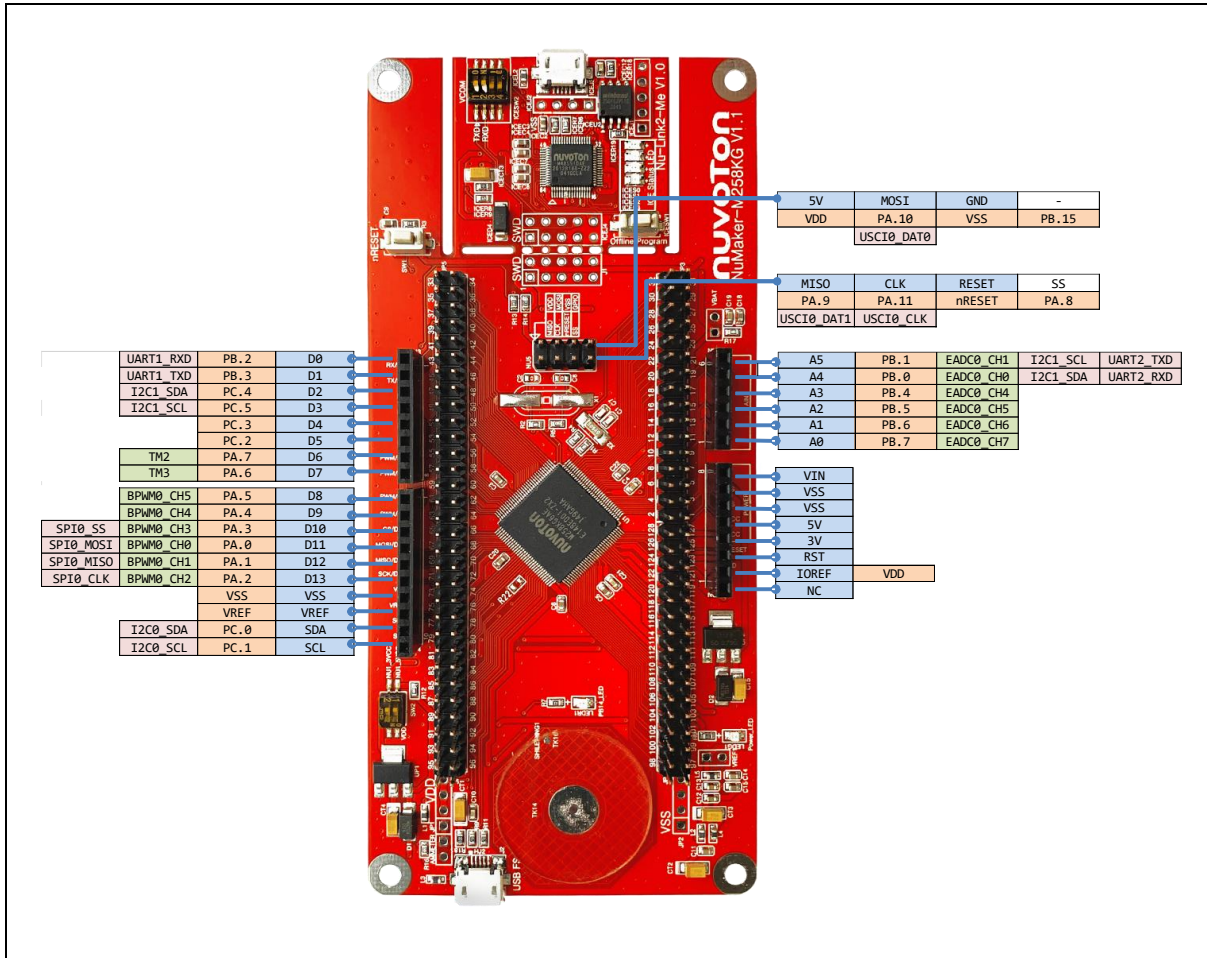


Figure 3-4 Arduino UNO Compatible Extension Connectors

Header		NuMaker-M258KG		Header		NuMaker-M258KG	
		Compatible to Arduino UNO	GPIO Pin of M258			Compatible to Arduino UNO	GPIO Pin of M258
NU3	NU3.1	D0	PB.2	NU2	NU2.6	A5	PB.1
	NU3.2	D1	PB.3		NU2.5	A4	PB.0
	NU3.3	D2	PC.4		NU2.4	A3	PB.4
	NU3.4	D3	PC.5		NU2.3	A2	PB.5
	NU3.5	D4	PC.3		NU2.2	A1	PB.6
	NU3.6	D5	PC.2		NU2.1	A0	PB.7
	NU3.7	D6	PA.7	NU1	NU1.8	VIN	-
	NU3.8	D7	PA.6		NU1.7	VSS	
NU4	NU4.1	D8	PA.5		NU1.6	VSS	
	NU4.2	D9	PA.4		NU1.5	5V	
	NU4.3	D10	PA.3		NU1.4	3V	
	NU4.4	D11	PA.0		NU1.3	RST	nRESET
	NU4.5	D12	PA.1		NU1.2	VDD	V _{DD}
	NU4.6	D13	PA.2		NU1.1	NC	-
	NU4.7	VSS	V _{SS}				
	NU4.8	VREF	V _{REF}				
	NU4.9	SDA	PC.0				
	NU4.10	SCL	PC.1				

Table 3-4 Arduino UNO Extension Connectors and M258KG6AE Mapping GPIO List

3.4 Power Supply Configuration

The NuMaker-M258KG is able to adopt multiple power supplies. External power sources include NU1 Vin (7 V to 12 V), V_{DD} (depending on the target chip operating voltage), and PC through USB connector. By using switches and voltage regulator, multiple power domains can be created on the NuMaker-M258KG.

3.4.1 VIN Power Source

Table 3-5 presents the Vin power source.

Connector	Net Name in Schematic	Description
NU1 pin8	NU1_VIN	Board external power source, with voltage range from 7 V to 12 V. The voltage regulator UP2 converts the NU1 pin8 input voltage to 5 V and supplies it to NU1_5VCC.

Table 3-5 Vin Power Source

3.4.2 5 V Power Sources

Table 3-6 presents the 5 V power sources.

Connector	Net Name in Schematic	Description
ICEJ3	USB_HS_VBUS	ICE USB connector supplies 5 V power from PC to M258KG target board and Nu-Link2-Me.
J2	USB_VBUS	USB connector on NuMaker-M258KG supplies 5 V power from PC to M258KG target board and Nu-Link2-Me.
NU1 pin5	NU1_5VCC	ICEJ3, J2 or NU1 pin8 supplies 5 V power to NU1 pin5. NU1 pin5 supplies 5 V power to target chip or Arduino adapter board.

Table 3-6 5 V Power Sources

3.4.3 3.3 V Power Sources

Table 3-7 presents the 3.3 V power sources.

Voltage Regulator	5 V Source	Description
ICEUP1	USB_HS_VBUS	ICEUP1 converts USB_HS_VBUS to 3.3 V and supplies 3.3 V to M258KG target board or ICE chip.
UP1	USB_VBUS	UP1 converts USB_VBUS to 3.3 V and supplies 3.3 V to M258KG target board. Note: SW2.2 (NU1 3VCC) should be switched to ON.
UP1	NU1_5VCC	UP1 converts NU1_5VCC to 3.3 V and supplies 3.3 V to M258KG target board. Note: SW2.2 (NU1 3VCC) should be switched to ON.

Table 3-7 3.3 V Power Sources

3.4.4 1.8 V Power Sources

Table 3-8 presents the 1.8 V power source.

Voltage Regular	5V Source	Description
ICEUP2	USB_HS_VBUS	ICEUP2 converts USB_HS_VBUS to 1.8 V and supplies 1.8 V to M258KG target board or ICE chip.

Table 3-8 1.8 V Power Sources

3.4.5 Power Connectors

Table 3-9 presents the power connectors.

Connector	Description
JP1	V _{DD} connector on the NuMaker-M258KG. Note: M258 operating voltage range is from 1.75 V to 5.5 V.
JP2	V _{SS} connector on the NuMaker-M258KG.

Table 3-9 Power Connectors

3.4.6 USB Connectors

Table 3-10 presents the USB connectors.

Connector	Description
ICEJ3	ICE USB connector on Nu-Link2-Me for power supply, debugging and programming from PC.
J2	USB FS connector on NuMaker-M258KG for power supply.

Table 3-10 USB Connectors

3.4.7 Power Switches

Table 3-11 presents the power switches.

Switch	Description
ICEJPR1	Configures the target chip operating voltage at 1.8 V / 3.3 V / 5 V.
ICEJPR2	Configures the ICE chip operating voltage at 1.8 V / 3.3 V.
SW2	Configures the target chip operating voltage at 3.3 V / 5 V.

Table 3-11 Power Switches

3.4.8 Power Supply Models

3.4.8.1 External Power Supply through Nu-Link2-Me to Target Chip

The external power supply source on Nu-Link2-Me is shown in Figure 3-5.

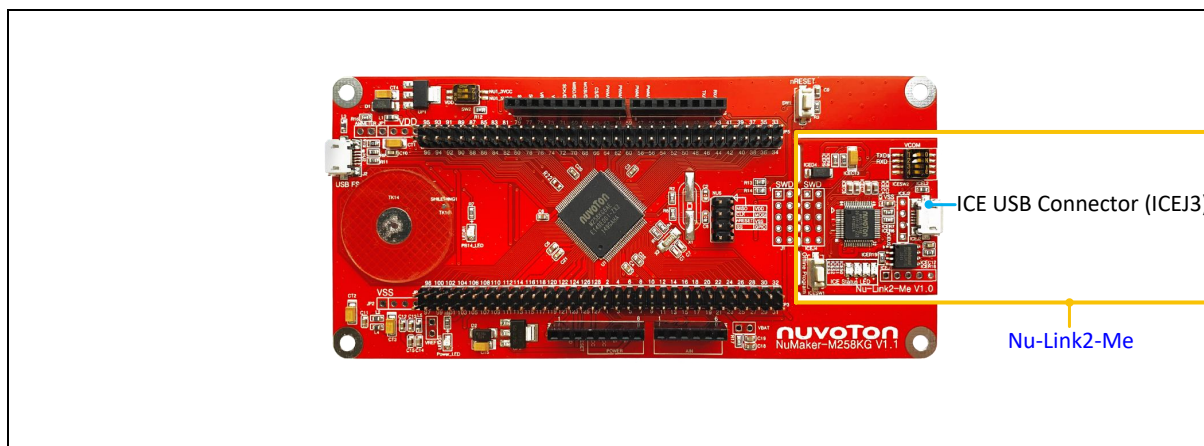


Figure 3-5 External Power Supply Sources on Nu-Link2-Me

To use ICEJ3 as external power supply source with Nu-Link2-Me, please follow the steps below:

1. Solder the resistor on ICEJPR1 (MCUVCC) depending on the target chip operating voltage.

2. Solder the resistor on ICEJPR2 (ICEVCC) depending on the ICE chip operating voltage.
3. Switch the SW2 to OFF.
4. Connect the external power supply to ICEJ3.

Table 3-12 presents all power models when supplying external power through Nu-Link2-Me. The Nu-Link2-Me external power sources are highlighted in yellow.

Model	Target Chip Voltage	ICEJ3	ICEJPR1 (MCUVCC) Selection ^[1]	ICEJPR2 (ICEVCC) Selection ^[2]	ICE Chip Voltage	SW2 Selection	J2	Vin	JP1
1	1.8 V	Connect to PC	1.8 V	1.8 V	1.8 V	Off	-	-	1.8 V output
2	3.3 V	Connect to PC	3.3 V (default)	3.3 V (default)	3.3 V	Off	-	-	3.3 V output
3	5 V	Connect to PC	5 V	3.3 V (default)	3.3 V	Off	-	-	5 V output
Note: 1. 0 Ω should be soldered between ICEJPR1's MCVCC and 1.8 V / 3.3 V / 5 V. 2. 0 Ω should be soldered between ICEJPR2's ICEVCC and 1.8 V / 3.3 V. 3. -: Unused.									

Table 3-12 Supply External Power through Nu-Link2-Me

3.4.8.2 External Power Supply through M258KG Target Board to Target Chip

The external power supply sources on M258KG target board are shown in Figure 3-6.

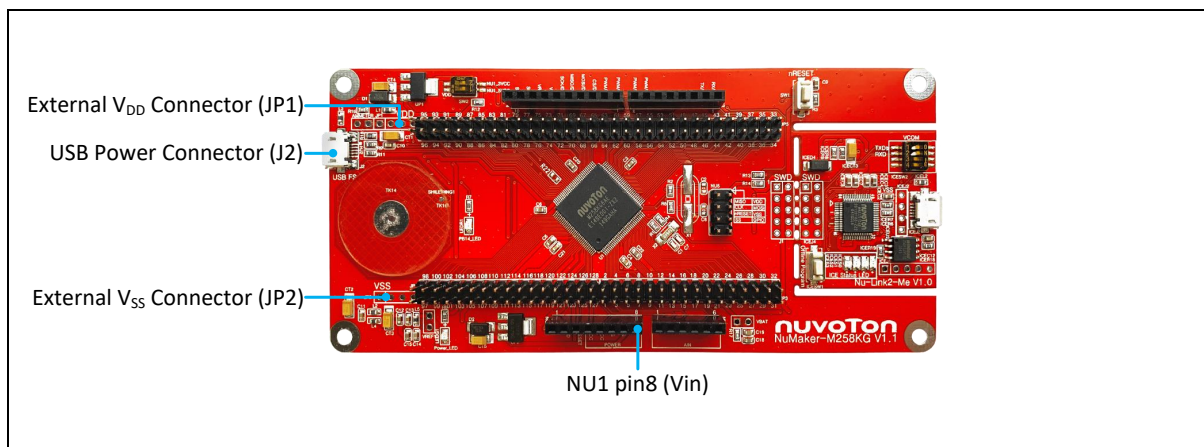


Figure 3-6 External Power Supply Sources on M258KG Target Board

To use Vin or J2 as external power supply source, please follow the steps below:

1. Switch the SW2 depending on the target chip operating voltage.
2. Remove the resistor on ICEJPR1 (MCUVCC).
3. Solder the resistor on ICEJPR2 (ICEVCC) depending on the ICE chip operating voltage.
4. Connect the external power supply to Vin or J2.

To use JP1 as external power supply source, please follow the steps below:

1. Switch the SW2 to OFF.

2. Remove the resistor on ICEJPR1 (MCUVCC).
3. Solder the resistor on ICEJPR2 (ICEVCC) depending on the ICE chip operating voltage.
4. Connect ICEJ3 to PC.
5. Connect the external power supply to JP1.

To use Vin or J2 as external power supply source with Nu-Link2-Me detached from NuMaker-M258KG, please follow the steps below:

1. Switch the SW2 depending on the target chip operating voltage.
2. Detach the Nu-Link2-Me from NuMaker-M258KG.
3. Connect the external power supply to Vin or J2.

To use JP1 as external power supply source with Nu-Link2-Me detached from NuMaker-M258KG, please follow the steps below:

1. Switch the SW2 to OFF.
2. Detach the Nu-Link2-Me from NuMaker-M258KG.
3. Connect the external power supply to JP1.

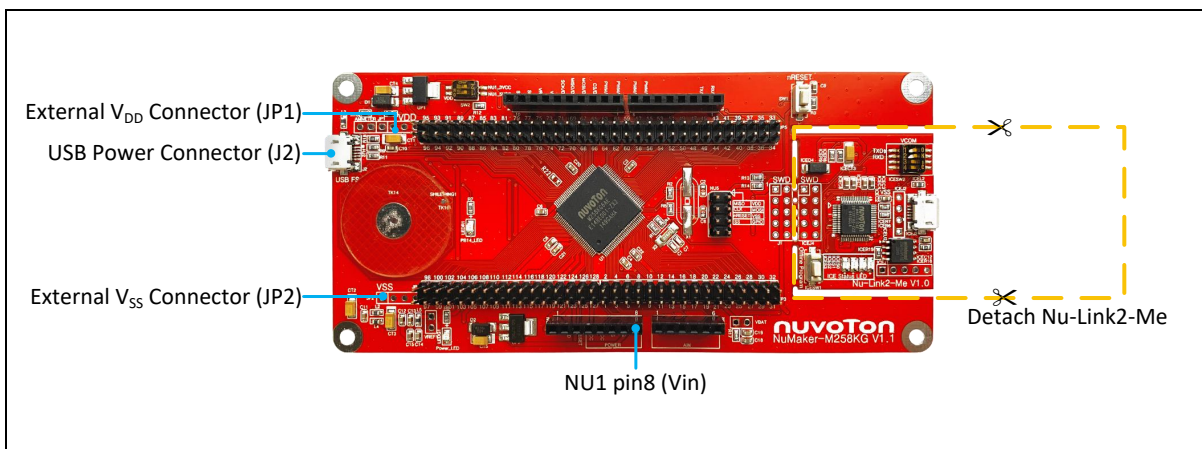


Figure 3-7 Detach the Nu-Link2-Me from NuMaker-M258KG

Table 3-13 presents all power models when supplies external power through M258KG target board. The M258KG target board external power sources are highlighted in yellow.

Model	Target Chip Voltage	Vin ^[1]	J2 ^[1]	ICEJ3	SW2 Selection	JP1 ^[2]	ICEJPR1 (MCUVCC) Selection ^[3]	ICEJPR2 (ICEVCC) Selection ^[4]	ICE Chip Voltage ^[5]
4	3.3 V	7 V ~ 12 V Input	-	-	NU1 3VCC	3.3 V output	Remove resistor	3.3 V	3.3 V
5	3.3 V	-	Connect to PC	-	NU1 3VCC	3.3 V output	Remove resistor	3.3 V	3.3 V
6	5 V	7 V ~ 12 V Input	-	-	NU1 5VCC	5 V output	Remove resistor	3.3 V	3.3 V
7	5 V	-	Connect to PC	-	NU1 5VCC	5 V output	Remove resistor	3.3 V	3.3 V
8	1.8 V ~ 3.6 V	-	-	Connect to PC	OFF	DC Input 1.8 V ~ 3.6 V	Remove resistor	1.8 V / 3.3 V	1.8 V / 3.3 V
9	1.8 V ~ 3.6 V	-	-	Nu-Link2-Me removed	OFF	DC Input 1.8 V ~ 3.6 V	-	-	-

Note:

1. The Vin input voltage will be converted by voltage regulator UP2 to 5 V. Supplying external power to Vin or J2 can provide 5 V to NU1 pin5 (5V) and 3.3 V to NU1 pin4 (3VCC).
2. JP1 external power input only provides voltage to target chip.
3. 0 Ω should be removed from ICEJPR1's MCVCC and 1.8 V / 3.3 V / 5 V.
4. 0 Ω should be soldered between ICEJPR2's ICEVCC and 1.8 V / 3.3 V.
5. The ICE chip voltage should be close to the target chip voltage.
6. -: Unused

Table 3-13 Supply External Power for M258KG Target Board

3.5 External Reference Voltage Connector

Table 3-14 presents the external reference voltage connector.

Connector	Description
VREF1	Connector for user to connect to the external reference voltage pin of the target chip. User needs to remove the L5 ferrite bead.

Table 3-14 External Reference Voltage Connector

3.6 Battery Voltage (V_{BAT}) Connector

Table 3-15 presents the external battery voltage connector.

Connector	Description
V _{BAT}	Connector for user to easily connect to the V _{BAT} pin of the target chip as power source of PF.4 ~ PF.6, RTC and LXT. User needs to remove the R17 resistor.

Table 3-15 Battery Voltage Connector

3.7 Ammeter Connector

Table 3-16 presents the ammeter connector.

Connector	Description
AMMETER	Connector for user to measure the target chip power consumption easily. User needs to remove the R16 resistor.

Table 3-16 Ammeter Connector

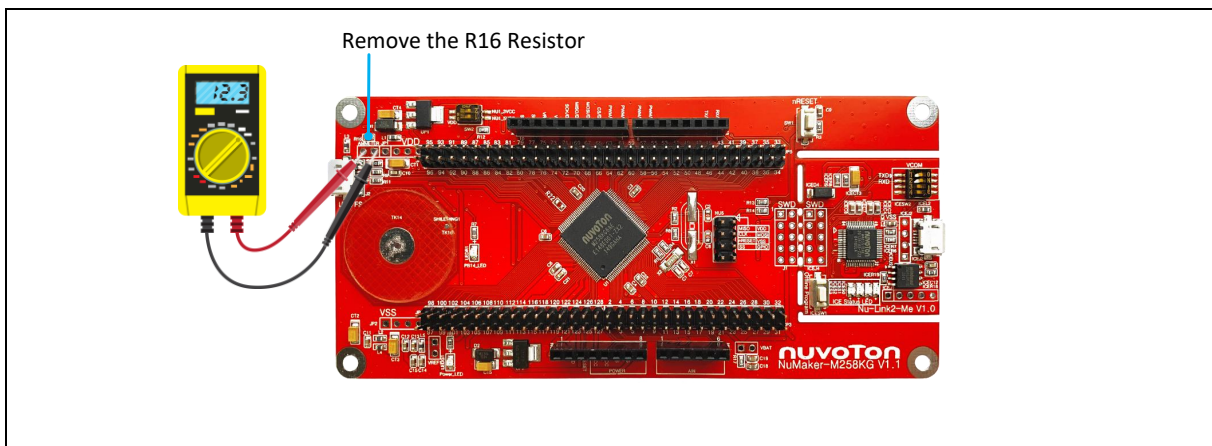


Figure 3-8 Wiring between Ammeter Connector and Ammeter

3.8 Touch Key

Table 3-17 presents the touch key, shielding electrode and reference pad.

Connector	Description
TK14	Touch key.
TK16	Shielding electrode.
TK13	Reference pad.

Table 3-17 Touch Key

3.9 Push Buttons

Table 3-18 presents the push buttons.

Component	Description
ICESW1	Offline program button to start offline ICP programming the target chip.
SW1	Reset button to reset the target chip.

Table 3-18 Push Buttons

3.10 LEDs

Table 3-19 presents the LEDs.

Component	Description
Power LED	The power LED indicates that the NuMaker-M258KG is powered.
PB14 LED	The LED is connected to the target chip PB.14.
ICES0, ICES1, ICES2 and ICES3	Nu-Link2-Me status LED.

Table 3-19 LEDs

3.11 LCD Panel

The LCD on the NuMaker-M258KG with 8 x 40 COM/SEG can be used to show some information such as time, battery status, temperature, and humidity. The part number of LCD panel is RHE6616TP01 made by TRICOMTEK. Figure 3-9 shows the LCD digit segment mapping table. Table 3-21 shows the pin map for the LCD.

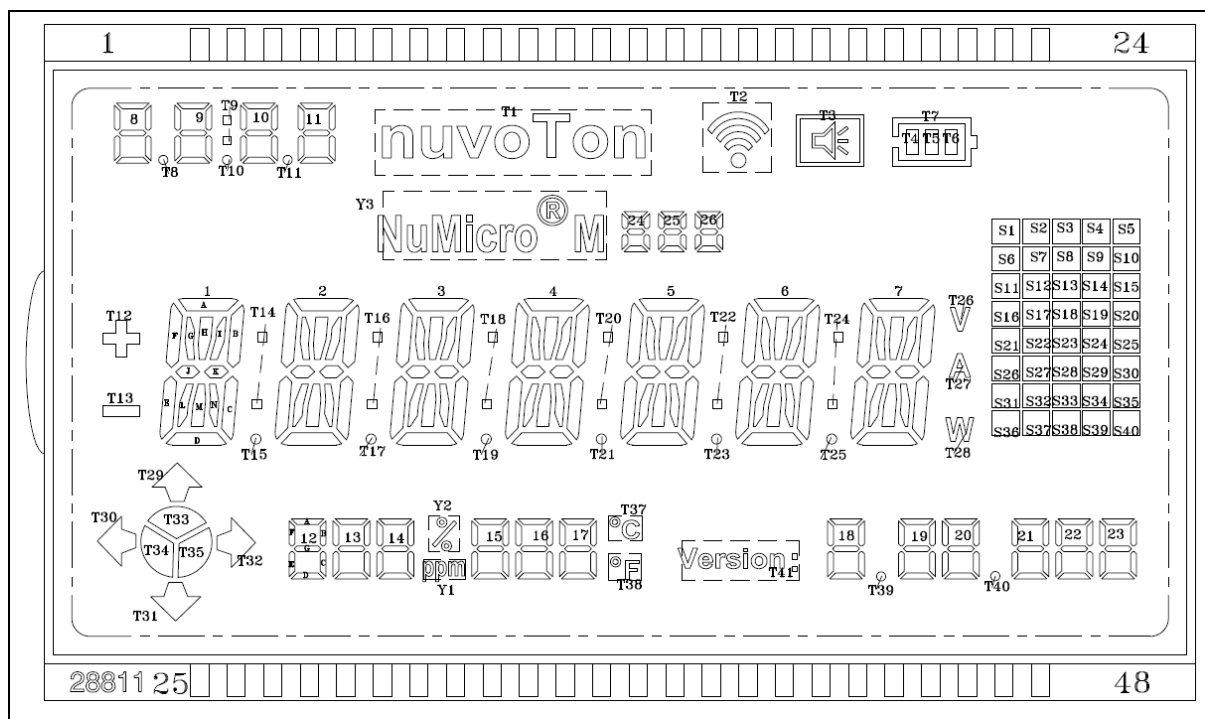


Figure 3-9 LCD Digit Mapping Table

Table 3-20 presents LCD specifications.

Parameter	Specifications
Drive Condition	1/8 Duty, 1/4 Bias, 8 x 40 COM/SEG
View Direction	12 O'Clock
Operating Voltage	4.8 V

Dimension	100 ± 0.2 mm x 64 ± 0.2 mm
Connectors	PIN

Table 3-20 LCD Specifications

PIN	1	2	3	4	6	7	8	9	10	11	12
COM1	1B	1A	1G	1F	24C	25D	25C	26D	26C	T7	S1
COM2	1I	1H	1J	T12	24G	25E	25G	26E	26G	T6	S6
COM3	1K	1N	1M	1E	24B	25F	25B	26F	26B	T4	S11
COM4	1C	1D	1L	T13	T10	25A	T11	26A	Y3	T5	S16
COM5	T32	T29	8D	8C	9C	10D	10C	11D	11C	T1	S21
COM6	T35	T33	8E	8G	9G	10E	10G	11E	11G	T2	S26
COM7	T34	T30	8F	8B	9B	10F	10B	11F	11B	T3	S31
COM8	T31	-	8A	T8	T9	10A	10A	11A	-	-	S36
PIN	13	14	15	17	18	19	20	21	22	23	24
COM1	S2	S3	S4	COM1	-	-	-	-	-	-	-
COM2	S7	S8	S9	-	COM2	-	-	-	-	-	-
COM3	S12	S13	S14	-	-	COM3	-	-	-	-	-
COM4	S17	S18	S19	-	-	-	COM4	-	-	-	-
COM5	S22	S23	S24	-	-	-	-	COM5	-	-	-
COM6	S27	S28	S29	-	-	-	-	-	COM6	-	-
COM7	S32	S33	S34	-	-	-	-	-	-	COM7	-
COM8	S37	S38	S39	-	-	-	-	-	-	-	COM8
PIN	25	26	28	29	30	31	32	33	34	35	36
COM1	2F	2G	2B	3F	3G	3A	3B	4F	4G	4A	4B
COM2	T14	2J	2I	T16	3J	3H	3I	T18	4J	4H	4I
COM3	2E	2M	2K	3E	3M	3N	3K	4E	4M	4N	4K
COM4	T15	2L	2C	T17	3L	3D	3C	T19	4L	4D	4C
COM5	12A	-	-	14A	Y1	15A	Y2	16A	T37	17A	T38
COM6	12F	12B	13B	14F	14B	15F	15B	16F	16B	17F	17B
COM7	12E	12G	13G	14E	14G	15E	15G	16E	16G	17E	17G
COM8	12D	12C	13C	14D	14C	15D	15C	16D	16C	17D	17C
PIN	37	39	40	41	42	43	44	45	46	47	48
COM1	5F	5A	5B	6F	6G	6A	6B	7F	7G	7A	7B

COM2	T20	5H	5I	T22	6J	6H	6I	T24	7J	7H	7I
COM3	5E	5N	5K	6E	6M	6N	6K	7E	7M	7N	7K
COM4	T21	5D	5C	T23	6L	6D	6C	T25	7L	7D	7C
COM5	18A	19A	T41	20A	T40	21A	T28	22A	T27	23A	T26
COM6	18F	19F	19B	20F	20B	21F	21B	22F	22B	23F	23B
COM7	18E	19E	19G	20E	20G	21E	21G	22E	22G	23E	23G
COM8	18D	19D	19C	20D	20C	21D	21C	22D	22C	23D	23C

Table 3-21 LCD Pin Mapping Table

3.12 Nu-Link2-Me

The Nu-Link2-Me is an attached on-board debugger and programmer. The Nu-Link2-Me supports on-chip debugging, online and offline ICP programming through SWD interface. The Nu-Link2-Me also supports virtual COM port (VCOM) for printing debug messages on PC. Besides, the programming status could be shown on the built-in LEDs. Lastly, the Nu-Link2-Me could be detached from the evaluation board and become a stand-alone mass production programmer. For more information about Nu-Link2-Me, please refer to *Nu-Link2-Pro Debugger and Programmer User Manual*.

3.12.1 VCOM Switches

Table 3-22 presents how to set the VCOM function by ICESW2.

ICESW2		
Pin	Function	Description
1	TXD	On: Connect target chip PB.13 (UART0_TXD) to Nu-Link2-Me. Off: Disconnect target chip PB.13 (UART0_TXD) to Nu-Link2-Me.
2	RXD	On: Connect target chip PB.12 (UART0_RXD) to Nu-Link2-Me. Off: Disconnect target chip PB.12 (UART0_RXD) to Nu-Link2-Me.
Note: Pin 3 and 4 is unused.		

Table 3-22 VCOM Function of Nu-Link2-Me

3.12.2 Status LEDs

Table 3-23 presents the status LEDs patterns for different operation on Nu-Link2-Me.

Operation Status	Status LED			
	ICES0	ICES1	ICES2	ICES3
Boot	Flash x 3	Flash x 3	Flash x 3	Flash x 3
Idle	On	-	-	-
One Nu-Link2-Me is selected to connect	Flash x 3	Flash x 3	Flash x 3	On
ICE online (Not connected to a target chip)	On	-	Flash x 3	Flash x 3
ICE online (Connected to a target chip)	On	-	-	On
ICE online (Failed to connect to a target chip)	On	Any	Flash	On
During offline programming	-	On	-	Flash
Offline programming completed	On	-	-	-
Offline programming completed (Auto mode)	On	On	-	-
Offline programming failed	On	Flash	-	-

Note: "Online" means Nu-Link2-Me is connected to ICP Programming Tool, IDE or NuTool.

Table 3-23 Operation Status LED Patterns

4 QUICK START

4.1 Toolchains Supporting

Install the preferred toolchain. Please make sure at least one of the toolchains has been installed.

- [KEIL MDK Nuvoton edition M0/M23](#)
- [IAR EWARM](#)
- [NuEclipse GCC \(for Windows\)](#)
- [NuEclipse GCC \(for Linux\)](#)

4.2 Nuvoton Nu-Link Driver Installation

Download and install the latest Nuvoton Nu-Link Driver.

- Download and install [Nu-Link Keil Driver](#) when using Keil MDK.
- Download and install [Nu-Link IAR Driver](#) when using IAR EWARM.
- Skip this step when using NuEclipse.

Please install the Nu-Link USB Driver as well at the end of the installation. The installation is presented in Figure 4-1 and Figure 4-2.

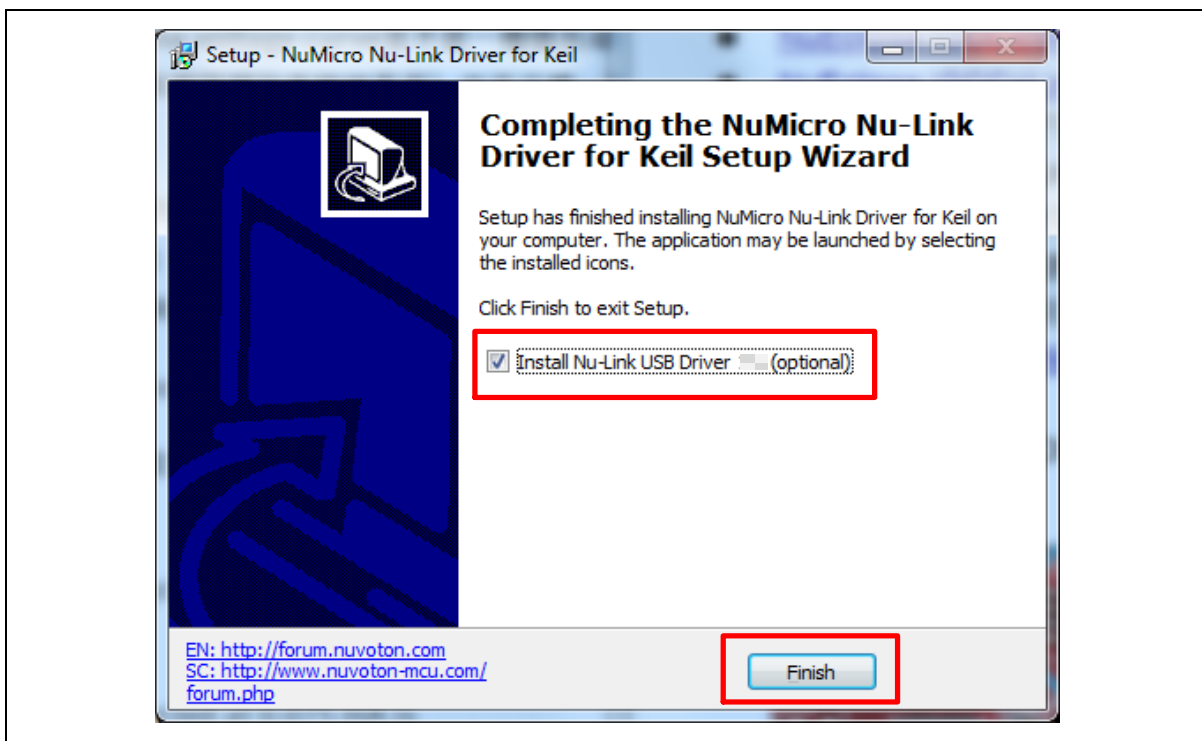


Figure 4-1 Nu-Link USB Driver Installation Setup

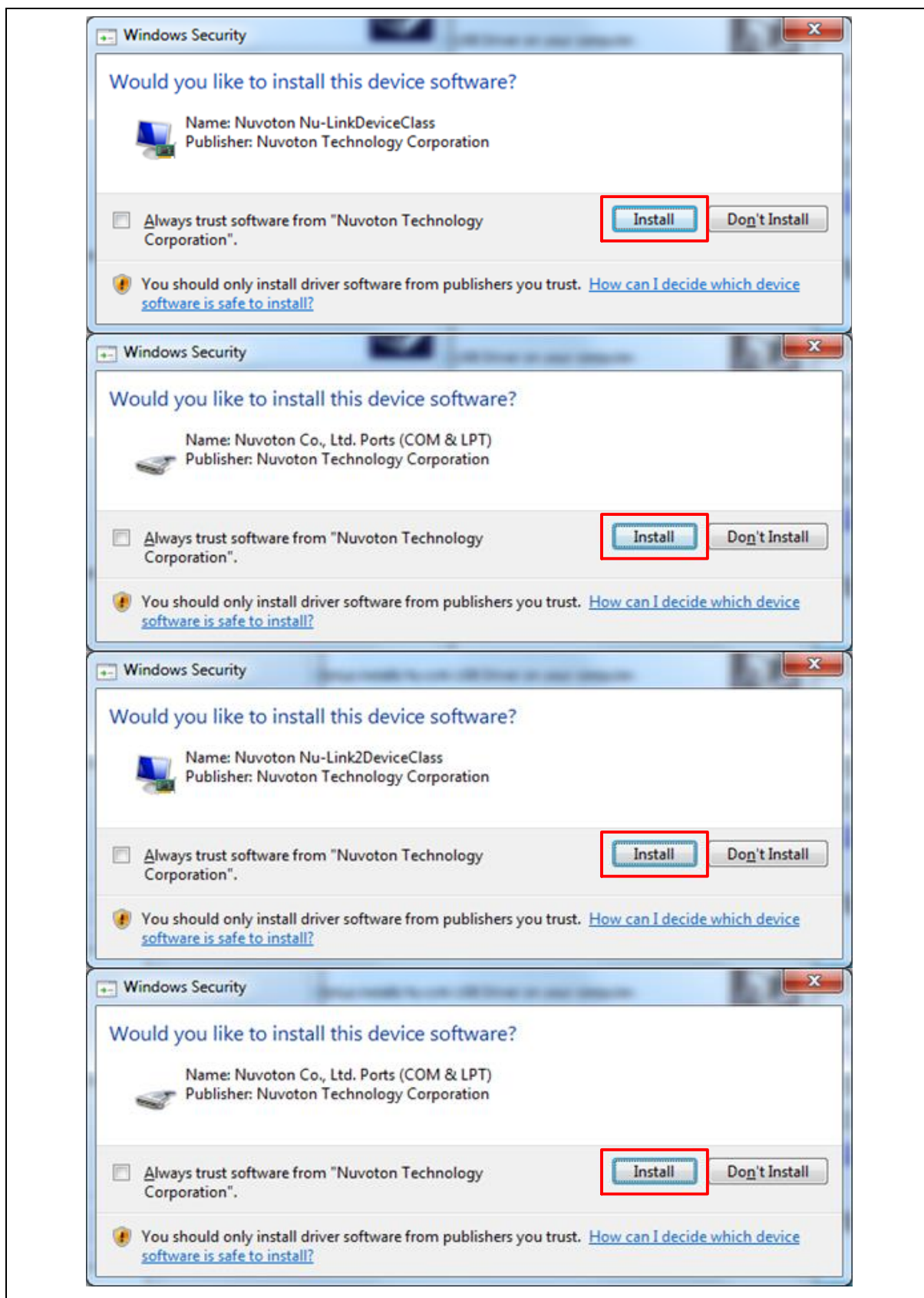


Figure 4-2 Nu-Link USB Driver Installation

4.3 BSP Firmware Download

Download and unzip the [Board Support Package \(BSP\)](#).

4.4 Hardware Setup

1. Open the virtual COM (VCOM) function by changing Nu-Link2-Me VCOM Switch No. 1 and 2 to ON.

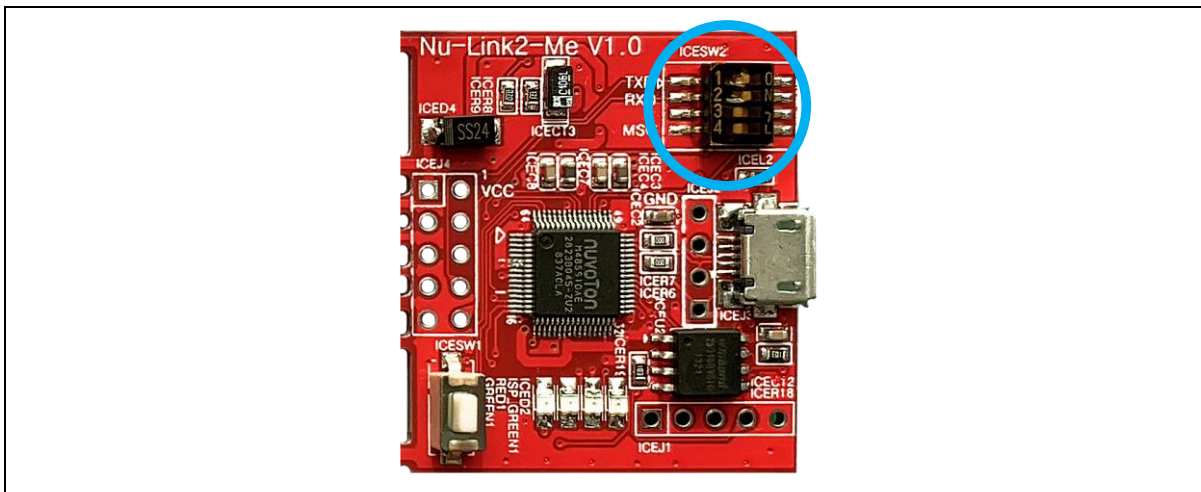


Figure 4-3 Open VCOM Function

2. Connect the ICE USB connector shown in Figure 4-4 to the PC USB port through a USB cable.

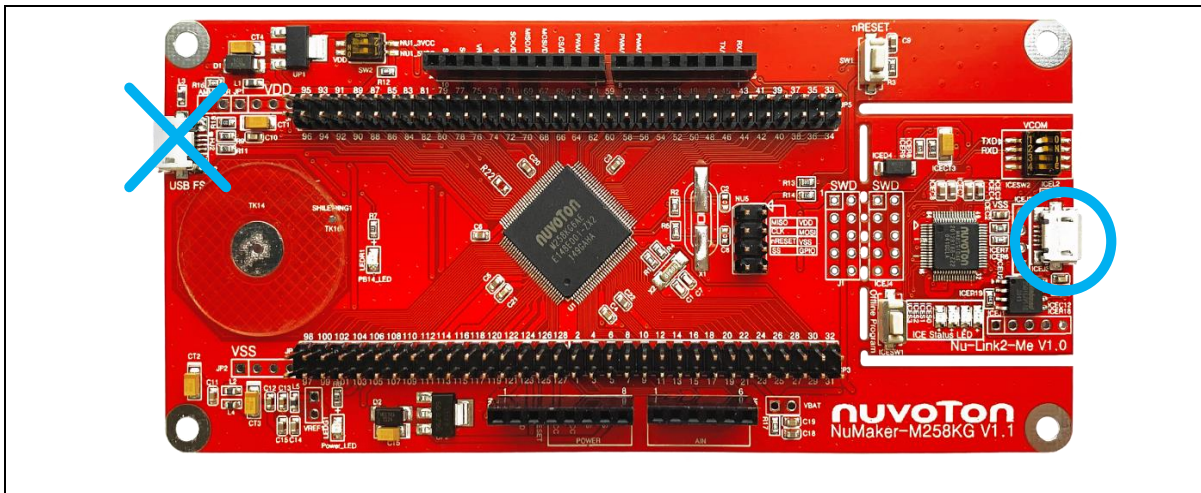


Figure 4-4 ICE USB Connector

3. Find the “Nuvoton Virtual COM Port” on the Device Manger as Figure 4-5.

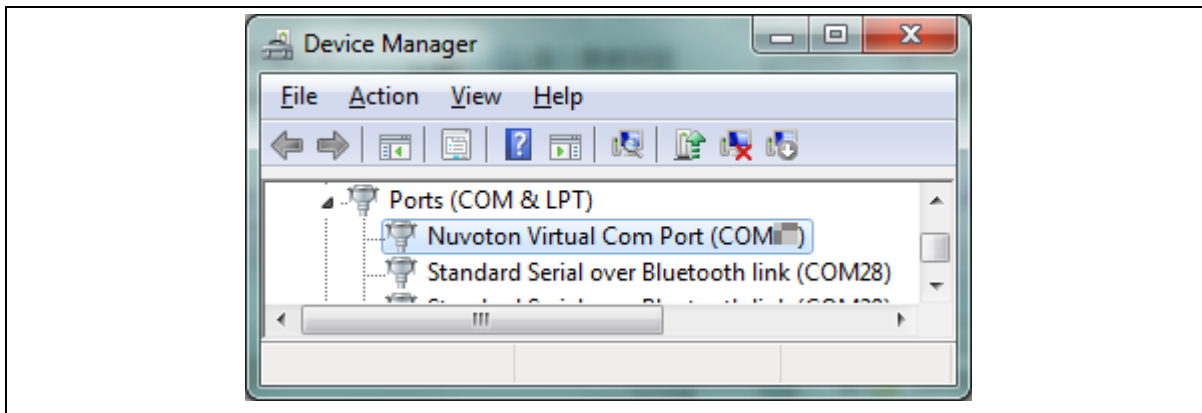


Figure 4-5 Device Manger

4. Open a serial port terminal, PuTTY for example, to print out debug message. Set the speed to 115200. Figure 4-6 presents the PuTTY session setting.

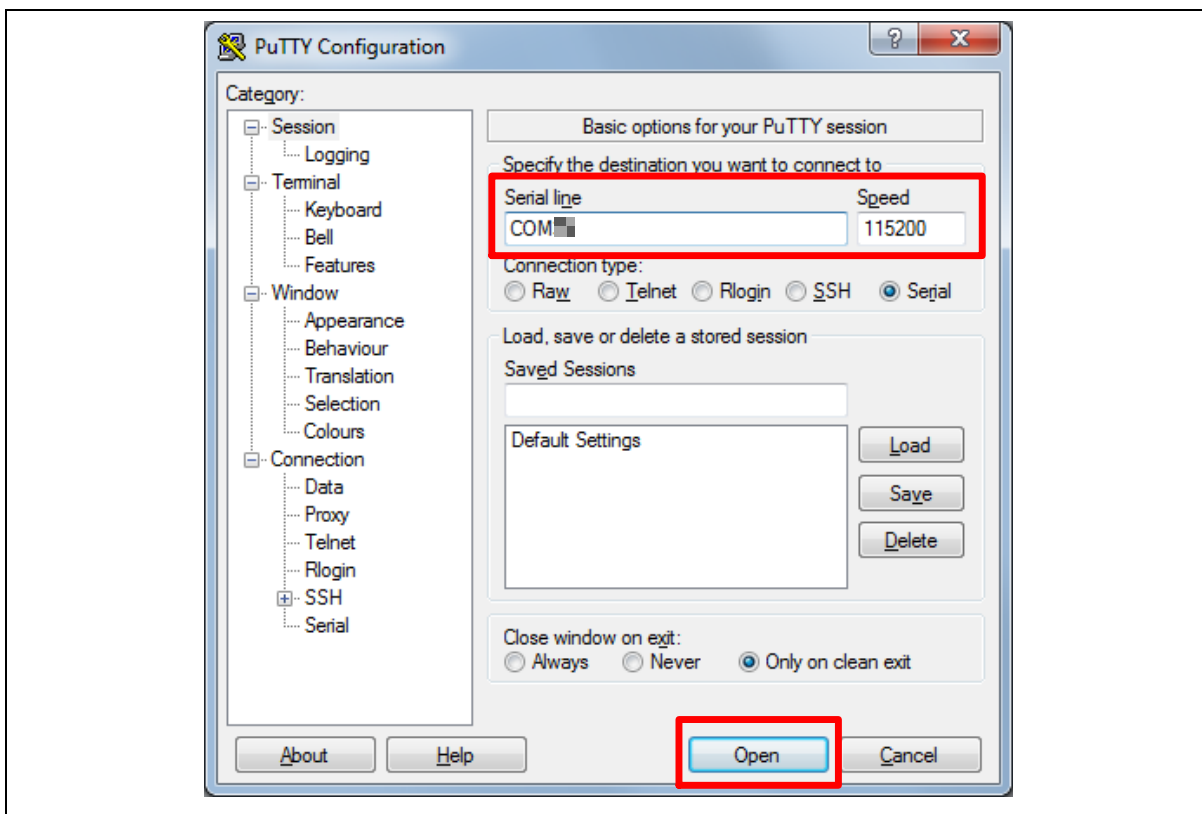


Figure 4-6 PuTTY Session Setting

4.5 Find the Example Project

Use the “Template” project as an example. The project can be found under the BSP folder as shown in Figure 4-7.

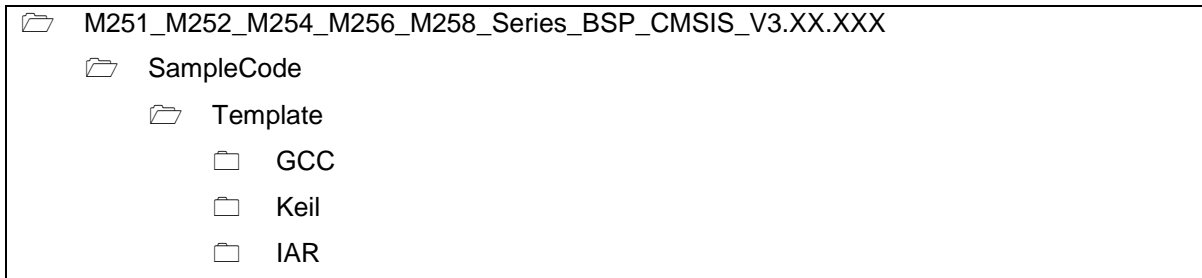


Figure 4-7 Template Project Folder Path

4.6 Execute the Project under Toolchains

Open and execute the project under the toolchain. The section 4.6.1, 4.6.2, and 4.6.3 describe the steps of executing project in Keil MDK, IAR EWARM and NuEclipse, respectively.

4.6.1 Keil MDK

This section provides steps to beginners on how to run a project by using Keil MDK.

1. Double-click the “Template.uvproj” to open the project.

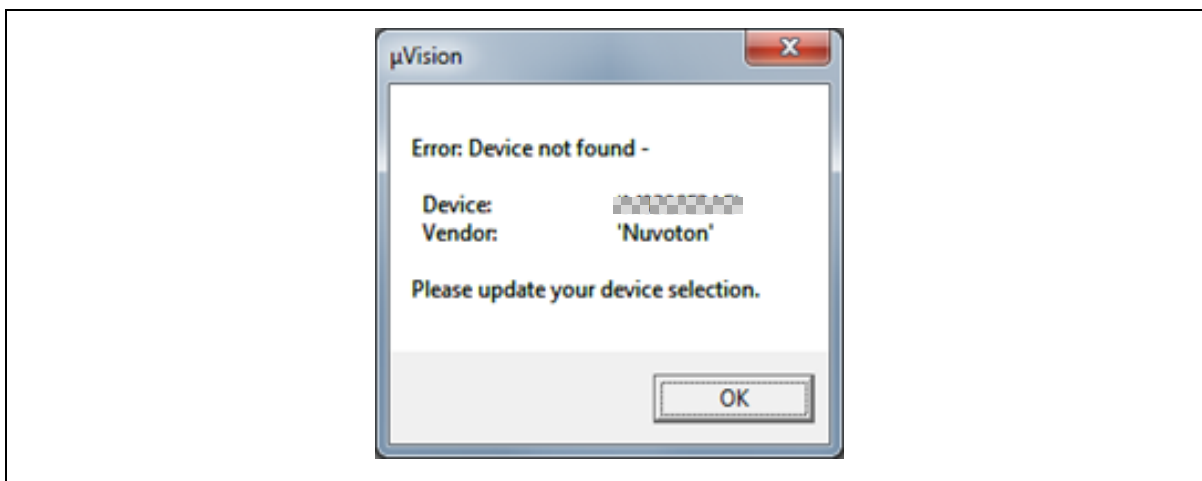


Figure 4-8 Warning Message of “Device not found”

Note: If Figure 4-8 warning message jumps out, please migrate to version 5 format as shown in Figure 4-9. The “.uvproj” filename extension will change to “.uvprojx”.

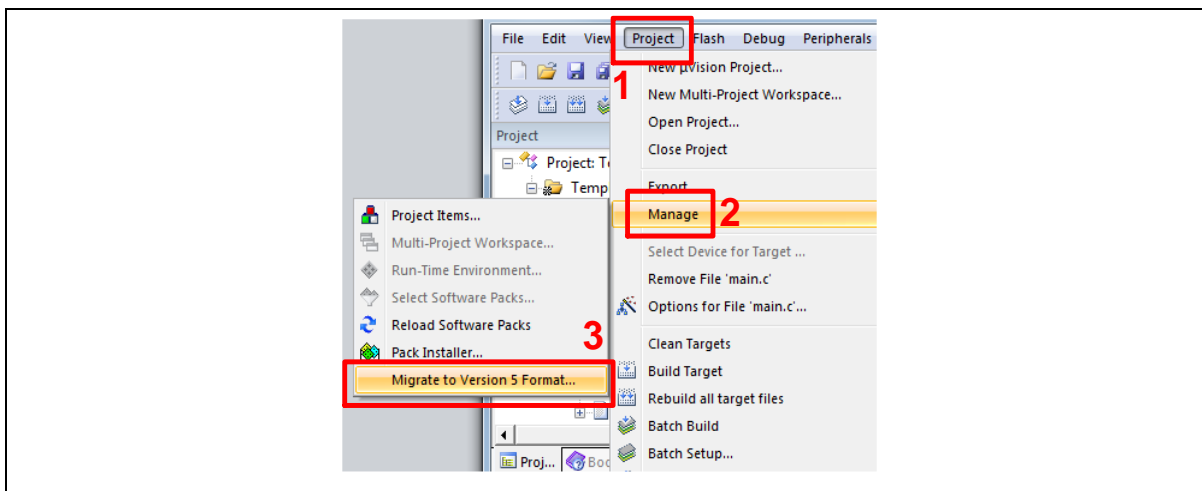


Figure 4-9 Project File Migrate to Version 5 Format

2. Make sure the debugger is “Nuvoton Nu-Link Debugger” as shown in Figure 4-10 and Figure 4-11.

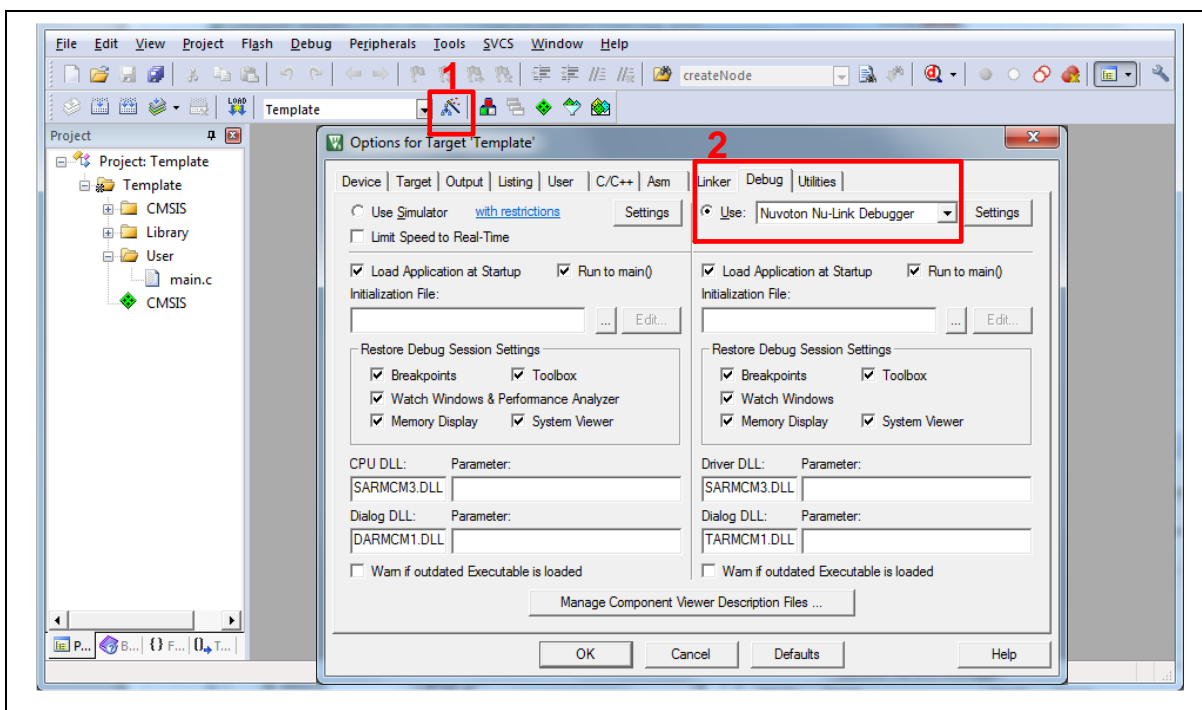


Figure 4-10 Debugger Setting in Options Window

Note: If the dropdown menu in Figure 4-10 does not contain “Nuvoton Nu-Link Debugger” item, please rework section 4.2.

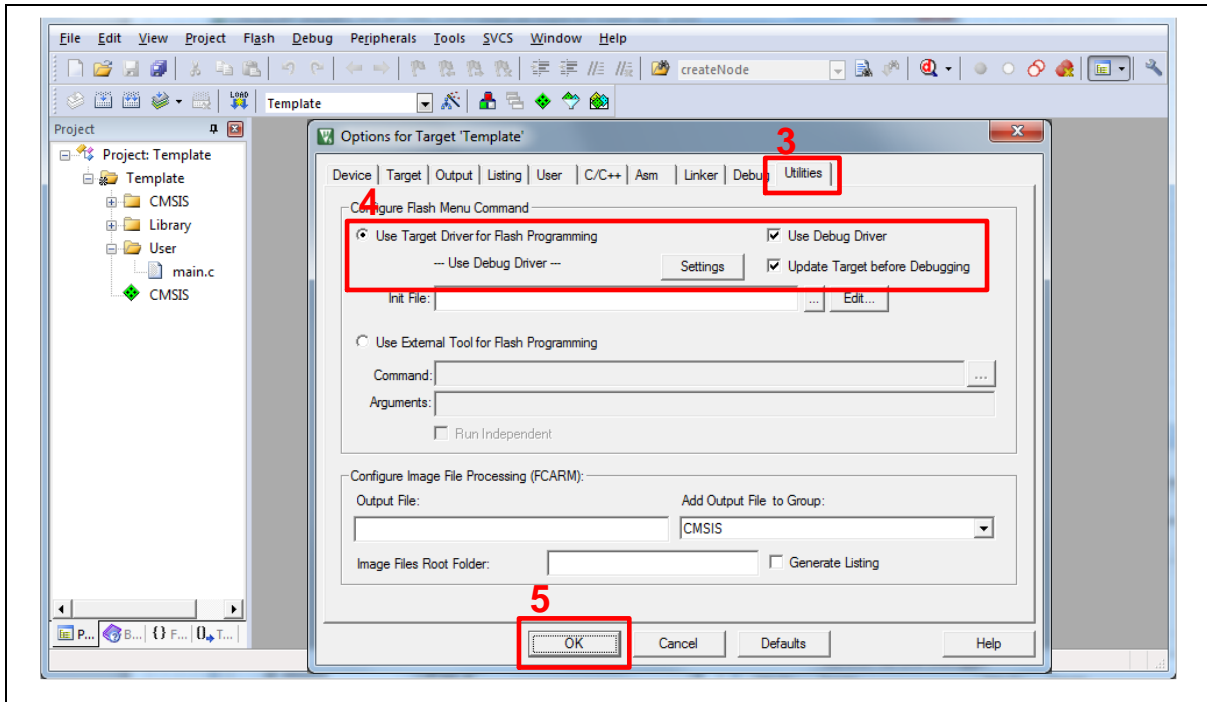


Figure 4-11 Programming Setting in Options Window

3. Rebuild all target files. After successfully compiling the project, download code to the Flash memory. Click **“Start/Stop Debug Section”** button to enter debug mode.

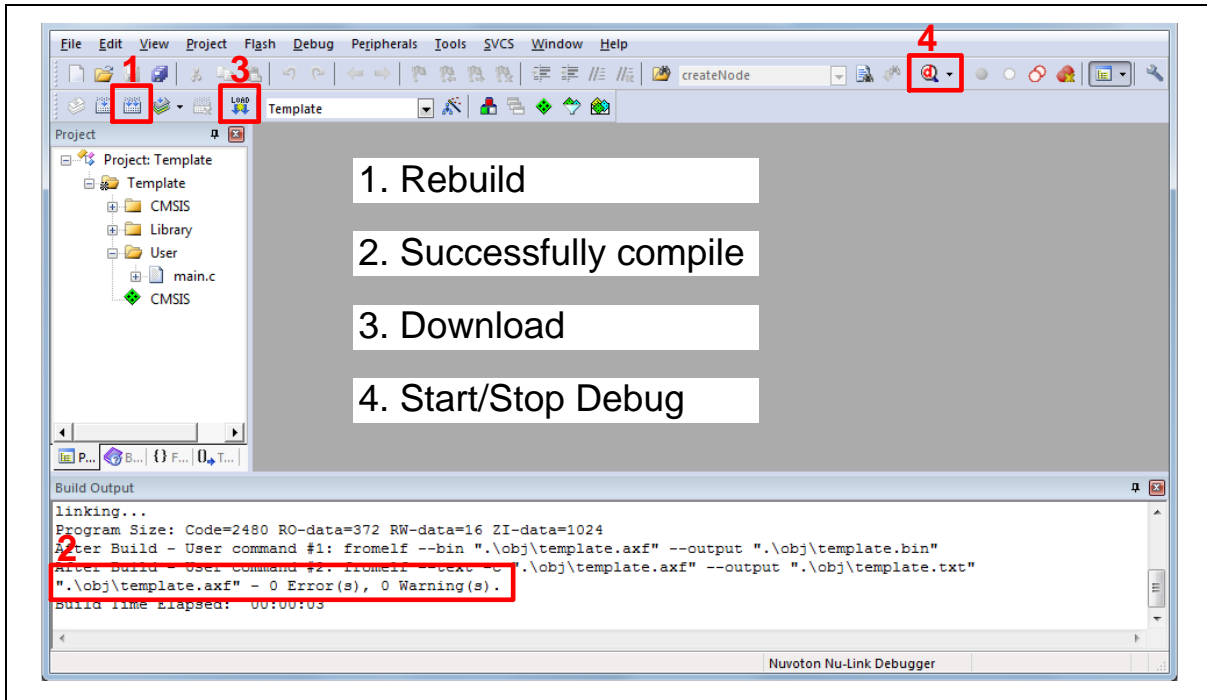


Figure 4-12 Compile and Download the Project

- Figure 4-13 shows the debug mode under Keil MDK. Click “Run” and the debug message will be printed out as shown in Figure 4-14. User can debug the project under debug mode by checking source code, assembly language, peripherals’ registers, and setting breakpoint, step run, value monitor, etc.

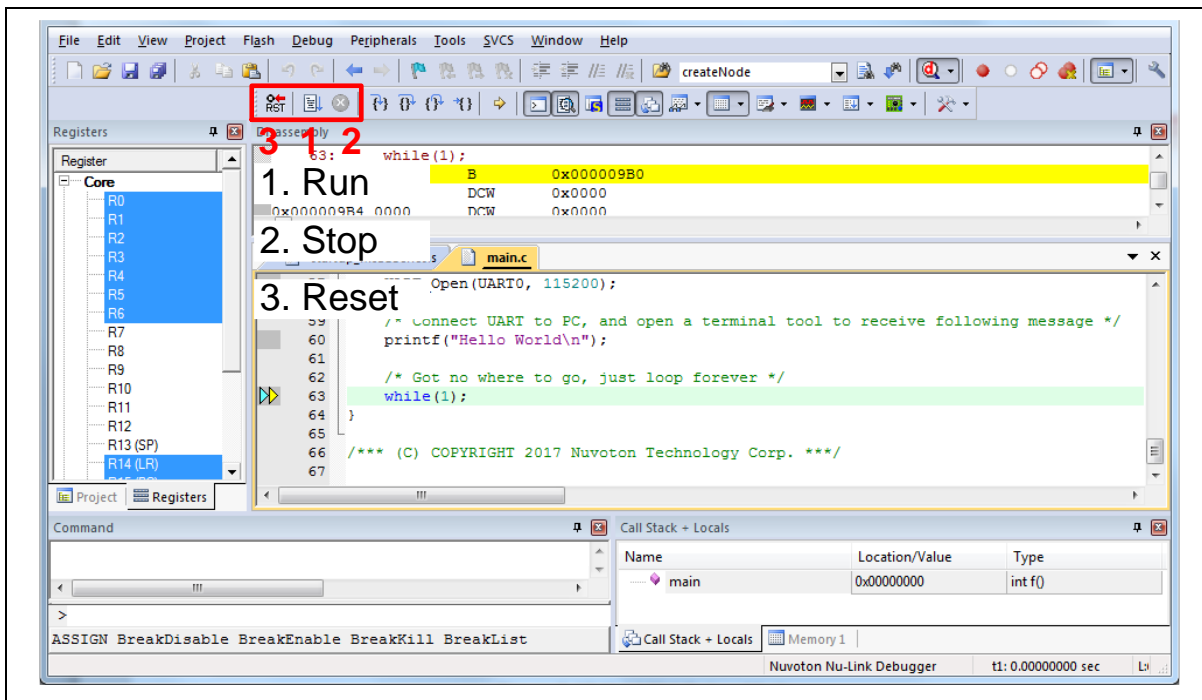


Figure 4-13 Keil MDK Debug Mode

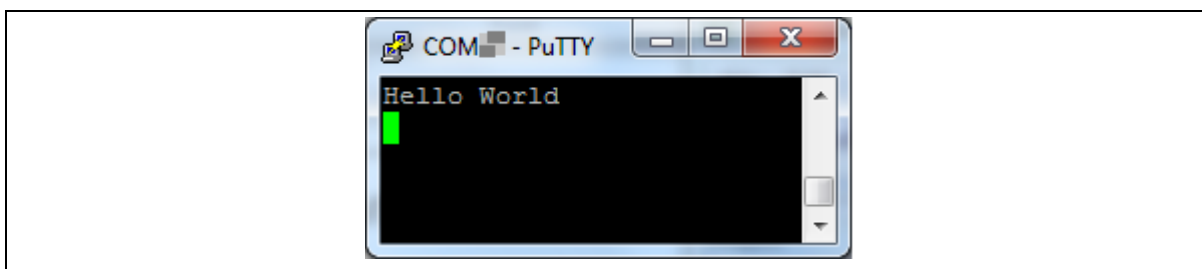


Figure 4-14 Debug Message on Serial Port Terminal Windows

4.6.2 IAR EWARM

This section provides steps to beginners on how to run a project by using IAR EWARM.

1. Double click the “Template.eww” to open the project.
2. Make sure the toolbar contains “Nu-Link” item as shown in Figure 4-15.

Note: If the toolbar does not contain “Nu-Link” item, please rework section 4.2.

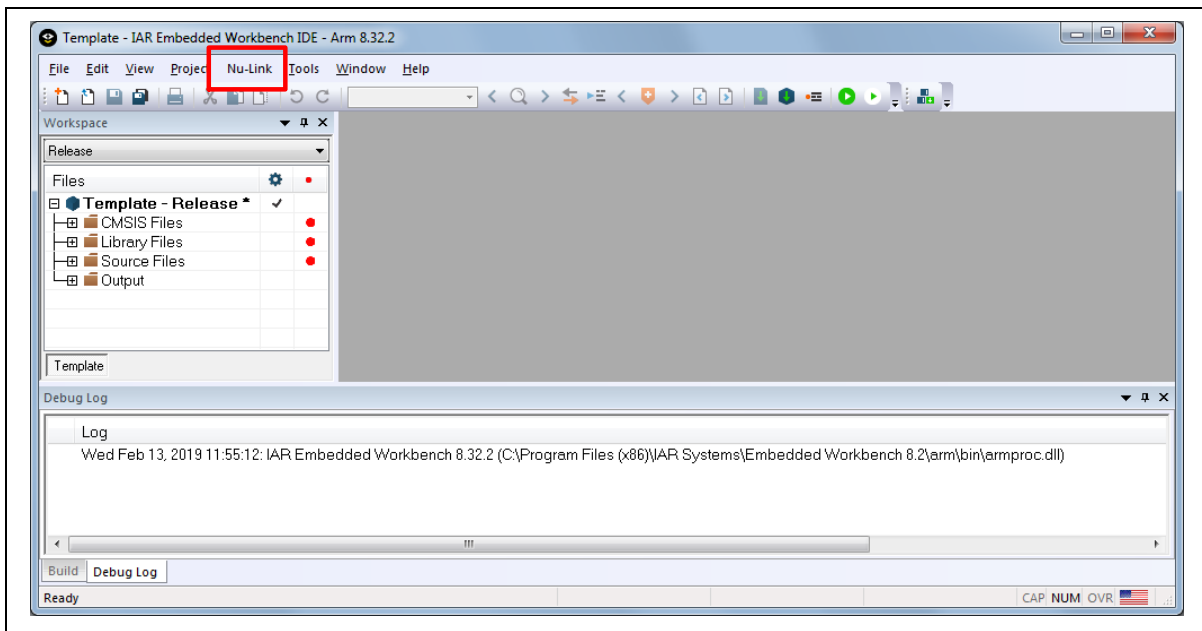


Figure 4-15 IAR EWARM Window

3. Make a target file as presented in Figure 4-16. After successfully compiling the project, download code to the Flash memory and enter debug mode.

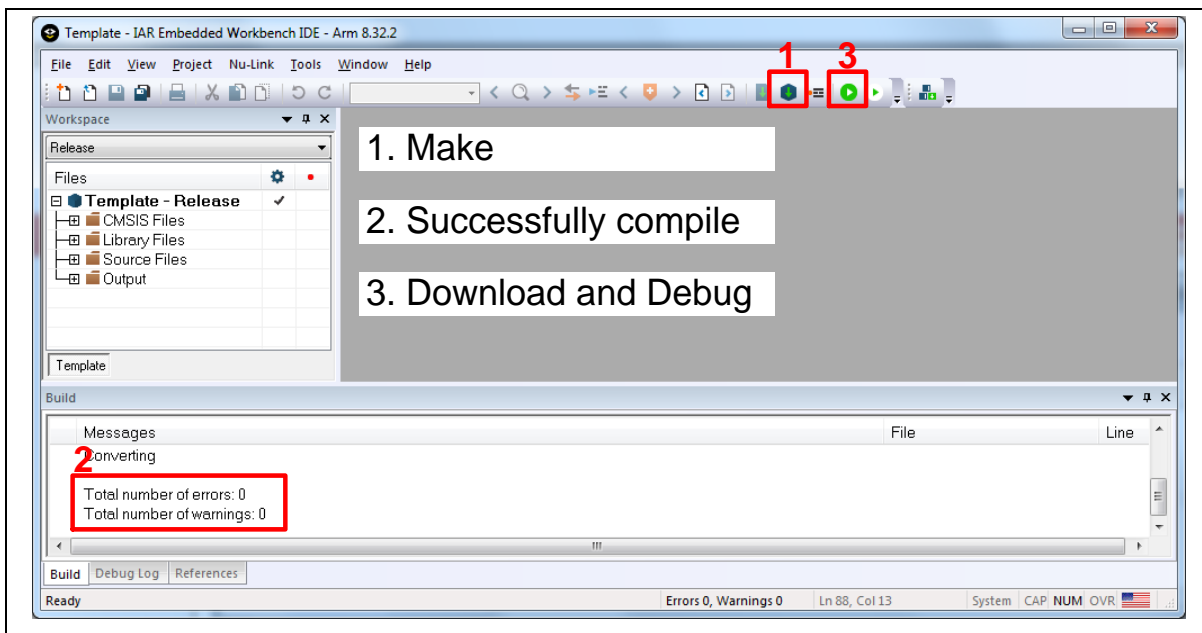


Figure 4-16 Compile and Download the Project

- Figure 4-17 shows the debug mode under IAR EWARN. Click “Go” and the debug message will be printed out as shown in Figure 4-18. User can debug the project under debug mode by checking source code, assembly language, peripherals’ registers, and setting breakpoint, step run, value monitor, etc.

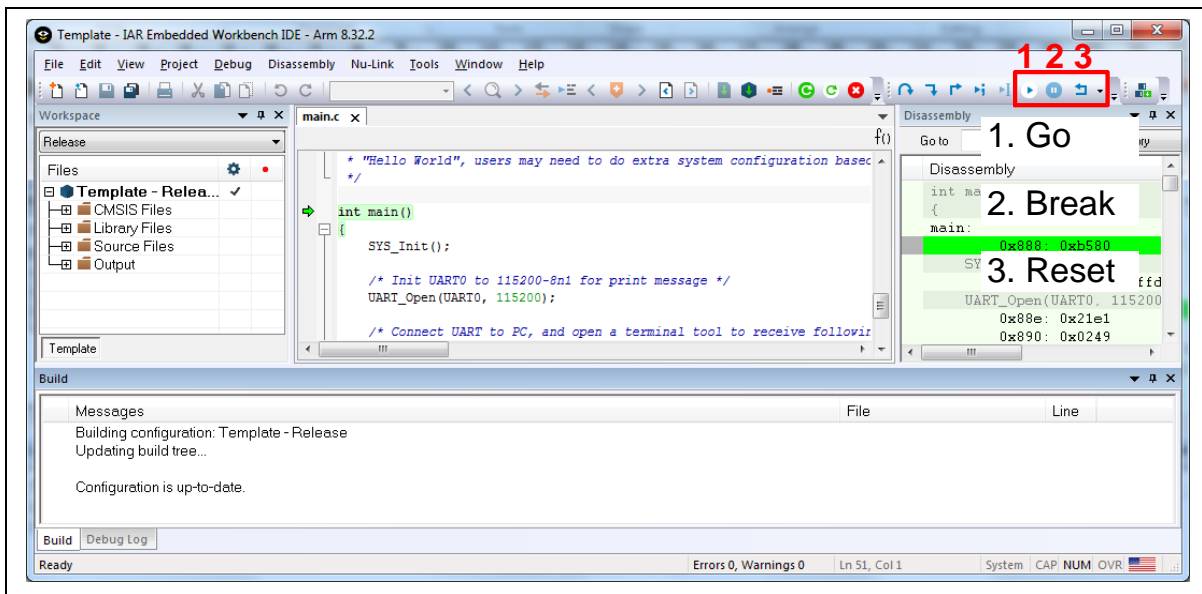


Figure 4-17 IAR EWARM Debug Mode

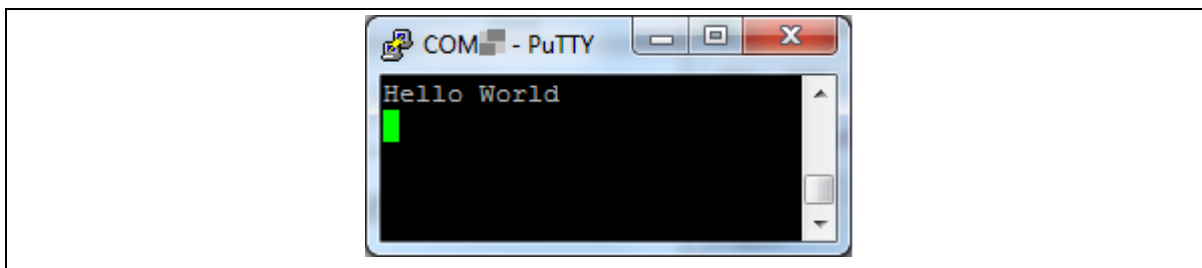


Figure 4-18 Debug Message on Serial Port Terminal Windows

4.6.3 NuEclipse

This section provides steps to beginners on how to run a project by using NuEclipse. Please make sure the filenames and project folder path contain neither invalid character nor space.

- Double-click “NuEclipse.exe” to open the toolchain.
- Import the “Template” project by following the steps presented in Figure 4-19 and Figure 4-20.

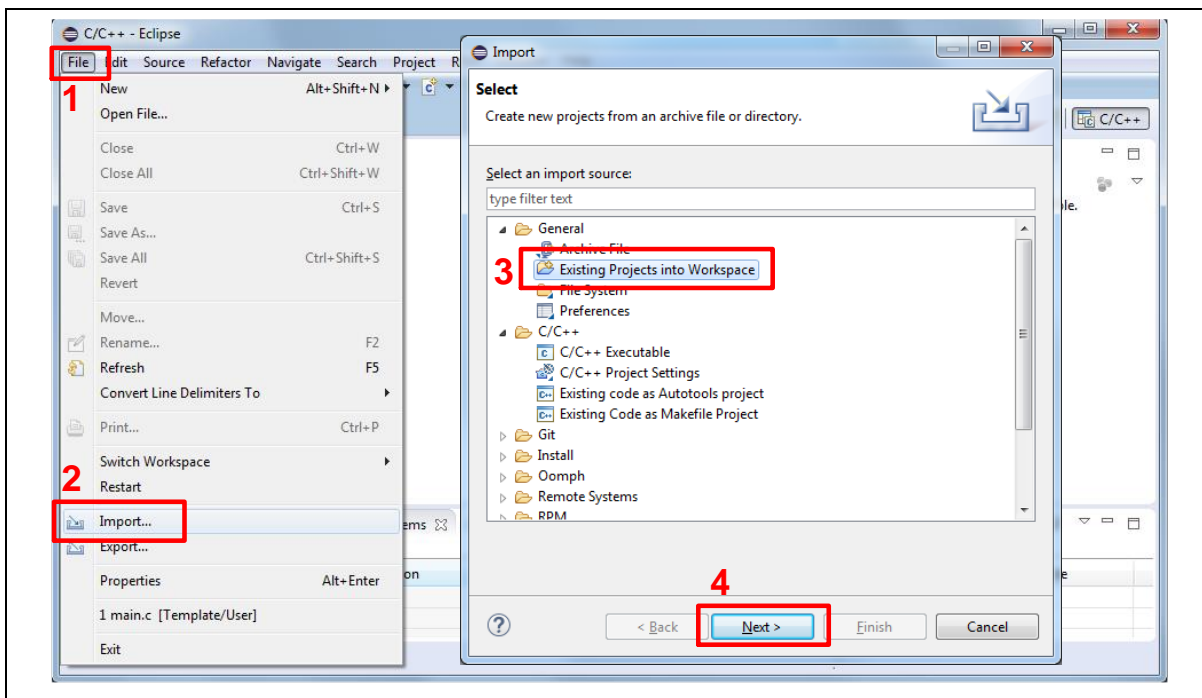


Figure 4-19 Import the Project in NuEclipse

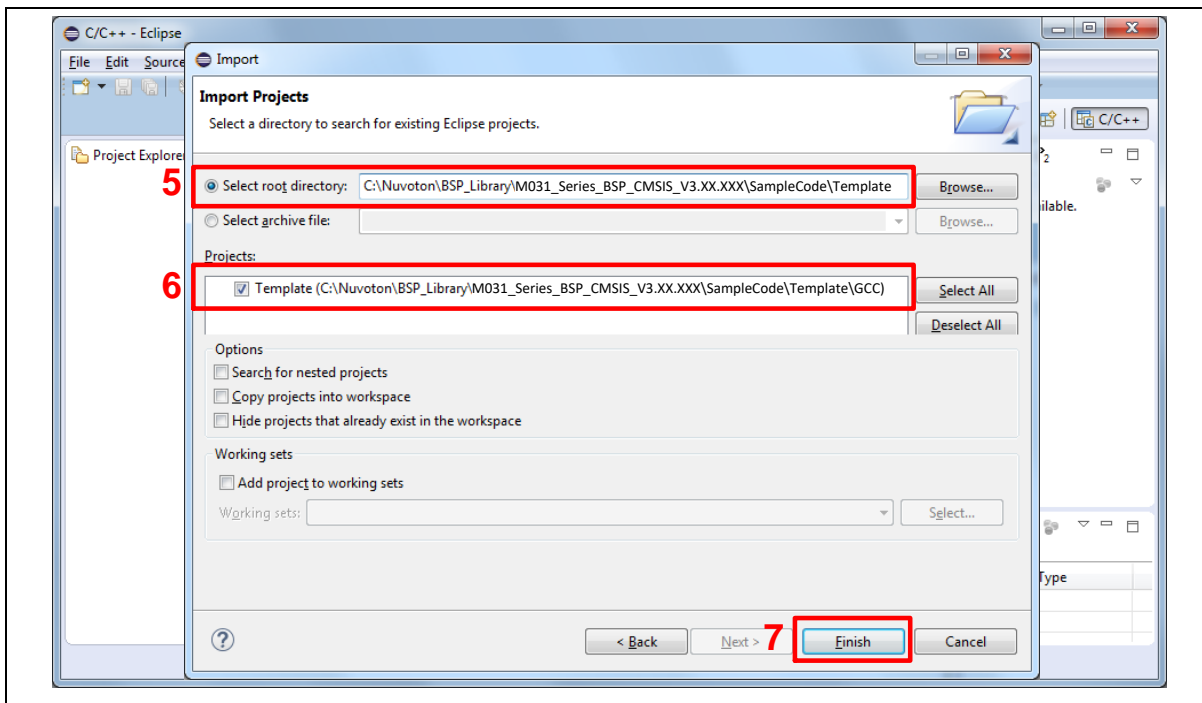


Figure 4-20 Import Projects Windows

3. Click the “Template” project and find the project properties as shown in Figure 4-21. Make sure the settings are the same as settings in Figure 4-22.

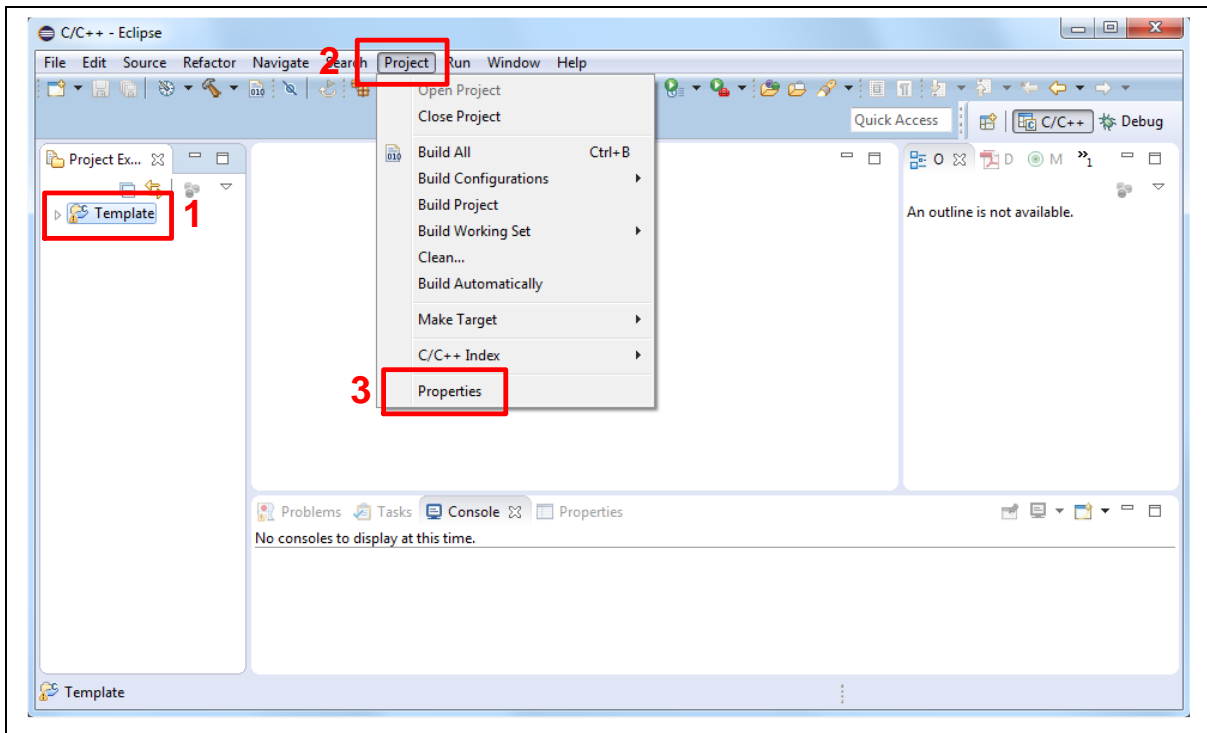


Figure 4-21 Open Project Properties Window

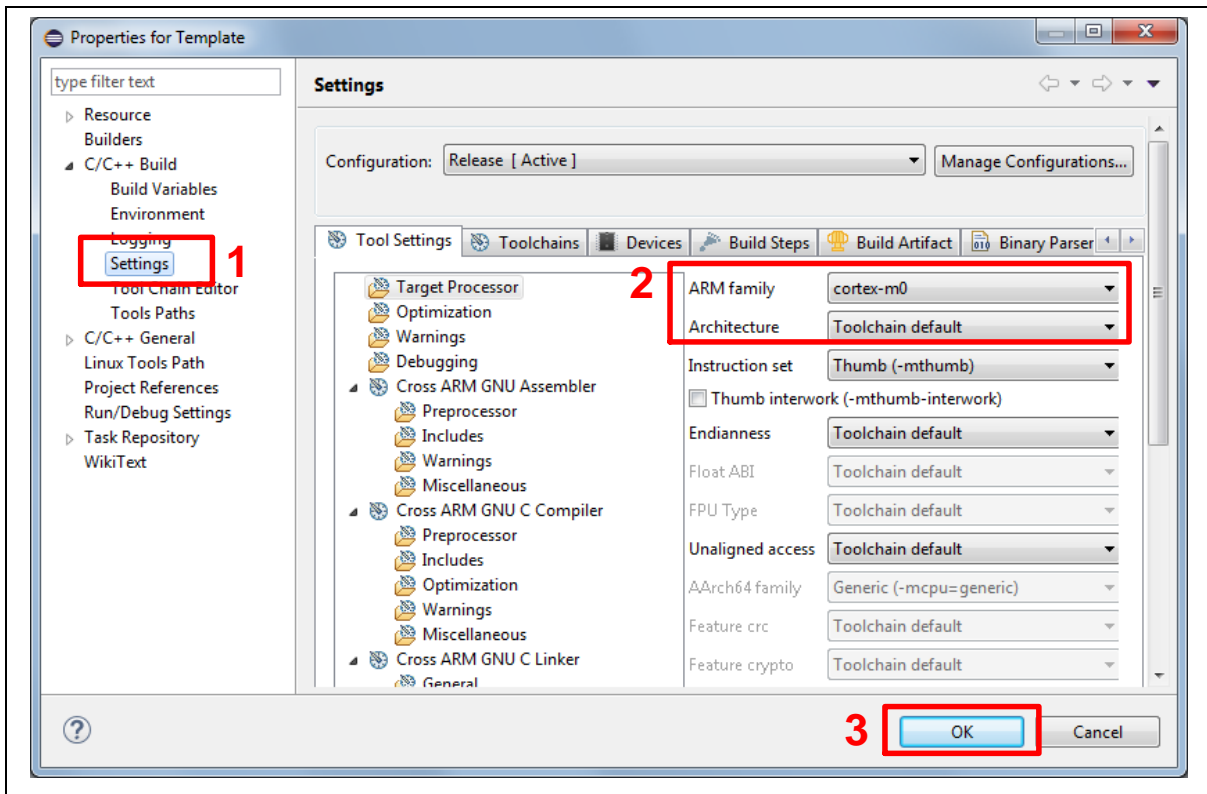


Figure 4-22 Project Properties Settings

4. Click the “Template” project and build the project.

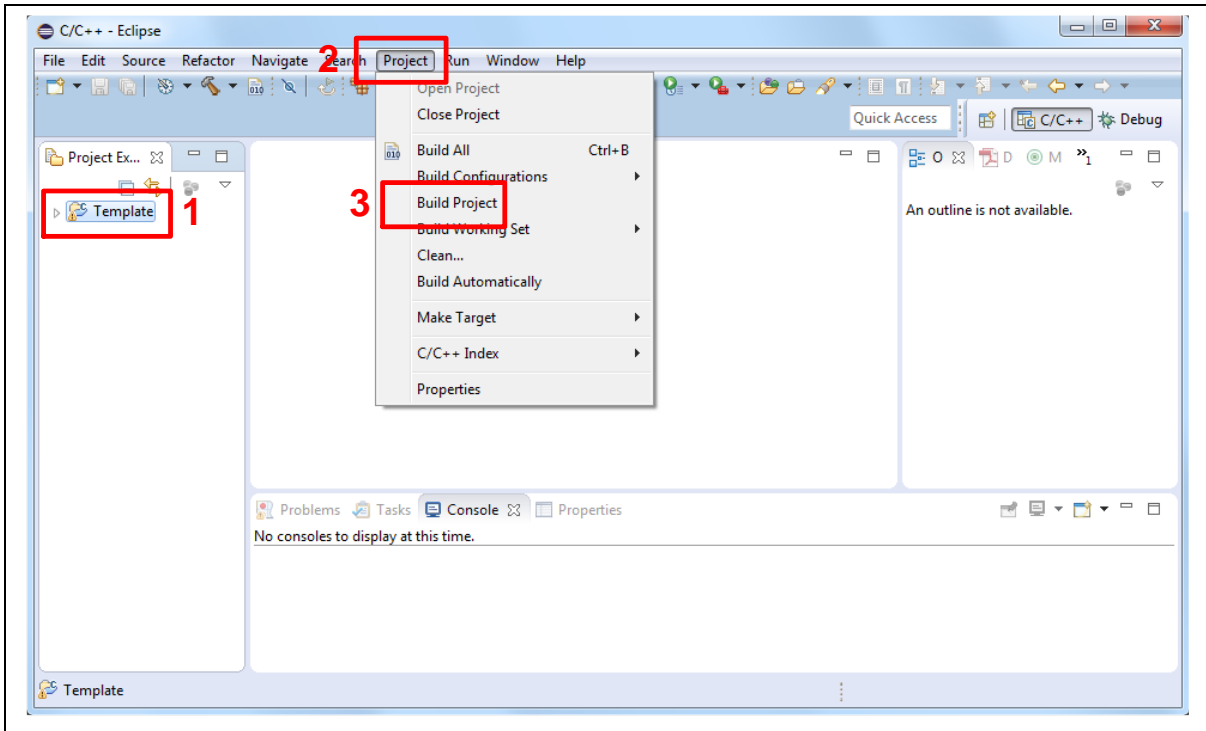


Figure 4-23 Build Project

5. After the project is built, click the “Template” project and set the “Debug Configuration” as shown in Figure 4-24. Follow the settings presented in Figure 4-25, Figure 4-26 and Figure 4-27 to enter debug mode.

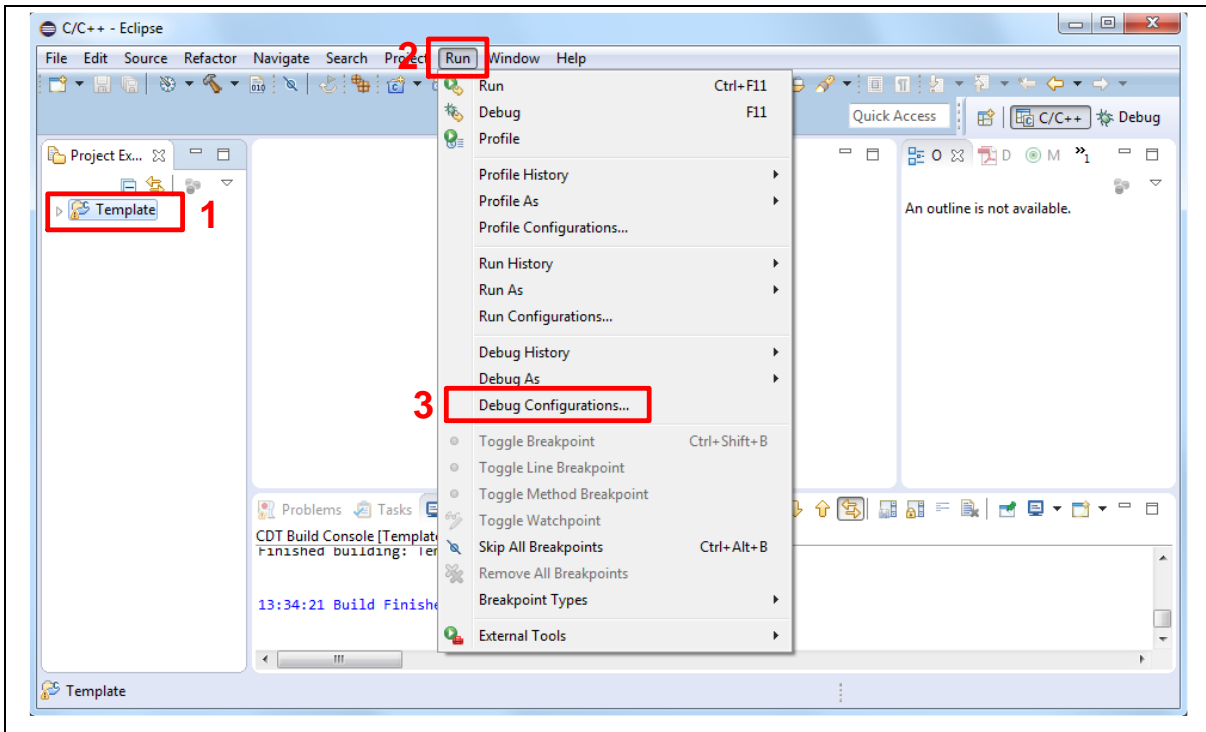
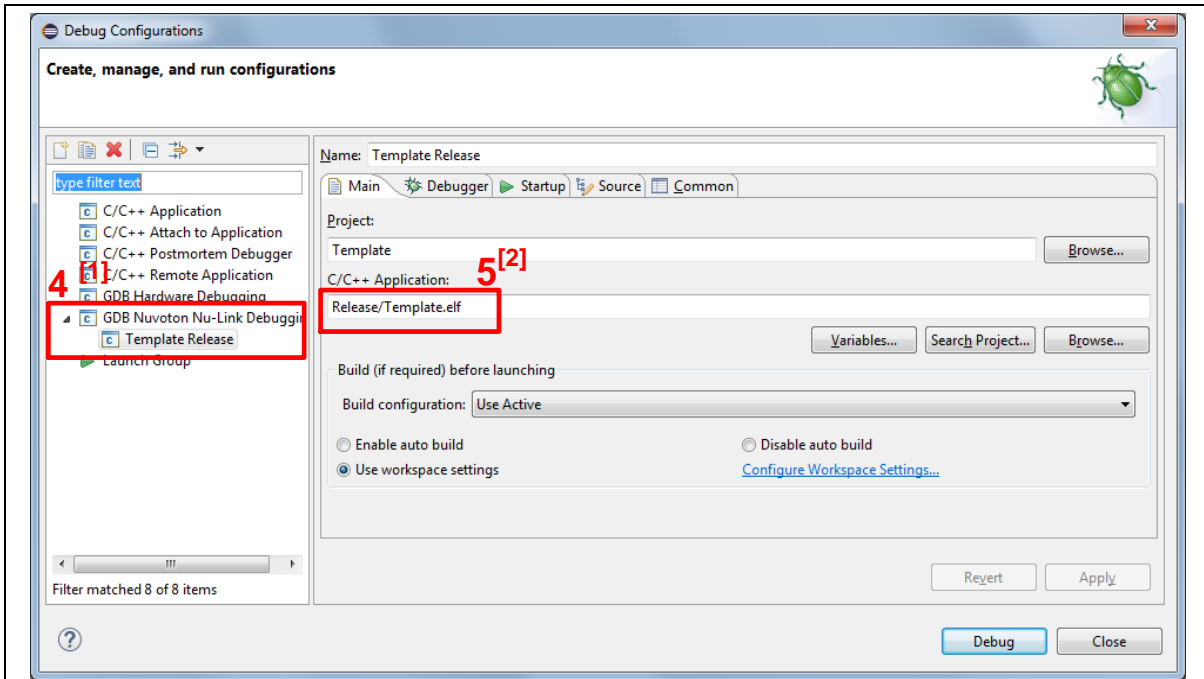


Figure 4-24 Open Debug Configuration



Note 1: Double-click the “GDB Nuvoton Nu-Link Debugging” to create the sub item.

Note 2: After the project is built, the “*.elf” file will be shown in “C/C++ Application” frame.

Figure 4-25 Main Tab Configuration

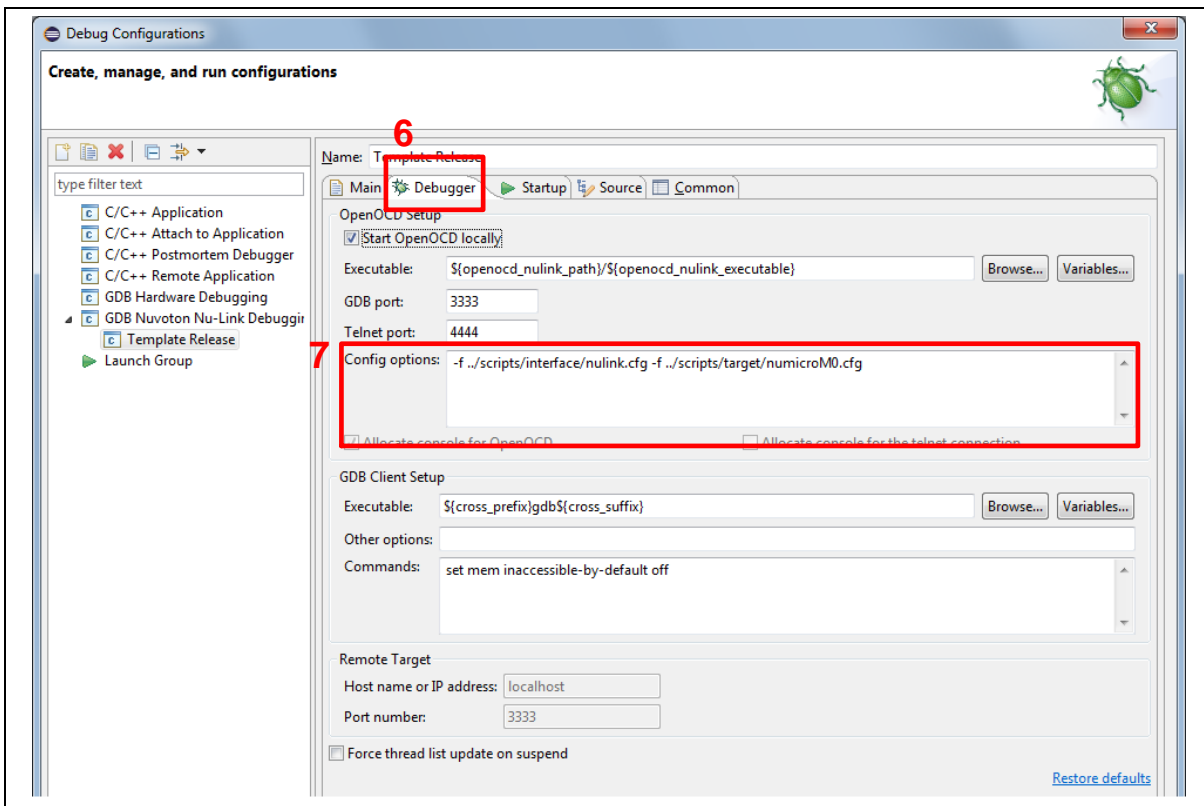
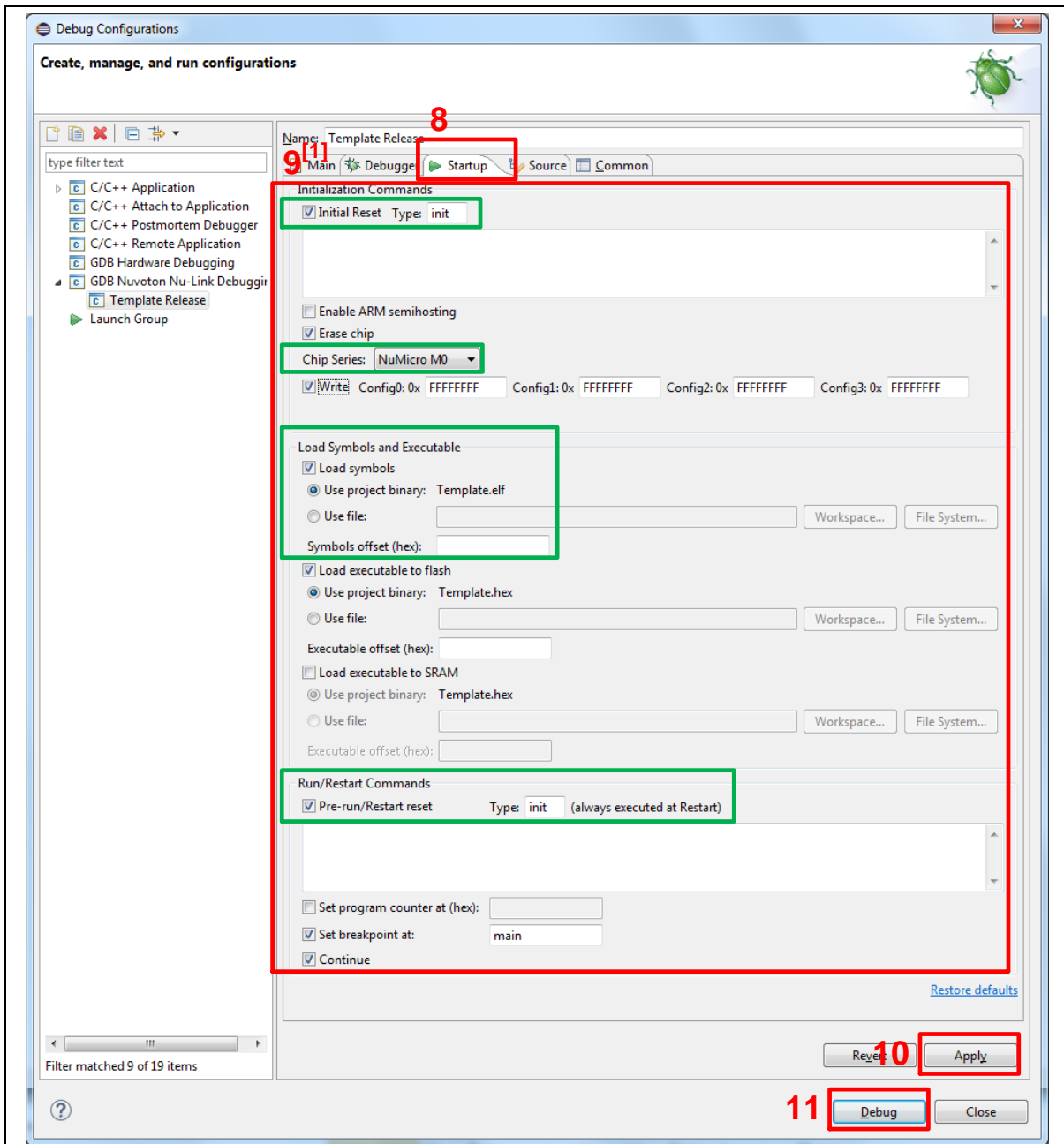


Figure 4-26 Debugger Tab Configuration



Note: User must follow those settings highlighted in green, and configure other settings depending on the needs.

Figure 4-27 Startup Tab Configuration

6. Figure 4-28 shows the debug mode under NuEclipse. Click “**Resume**” and the debug message will be printed out as shown in Figure 4-29. User can debug the project under debug mode by checking source code, assembly language, peripherals’ registers, and setting breakpoint, step run, value monitor, etc. For more information about how to use NuEclipse, please refer to the *NuEclipse User Manual*.

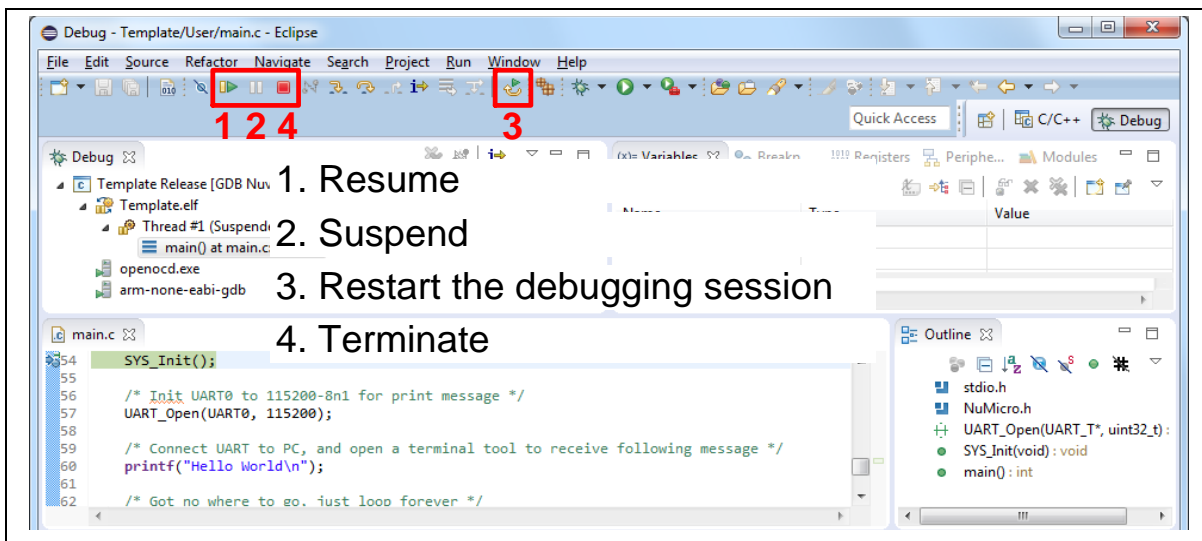


Figure 4-28 NuEclipse Debug Mode

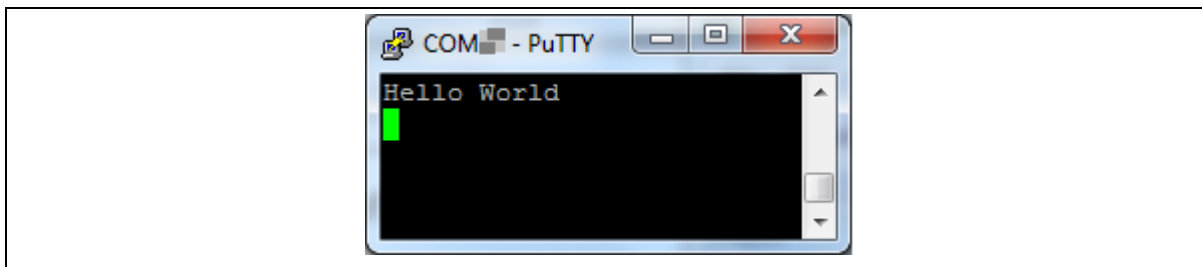


Figure 4-29 Debug Message on Serial Port Terminal Windows

5 NUMAKER-M258KG SCHEMATICS

5.1 Nu-Link2-Me

Figure 5-1 shows the Nu-Link2-Me circuit.

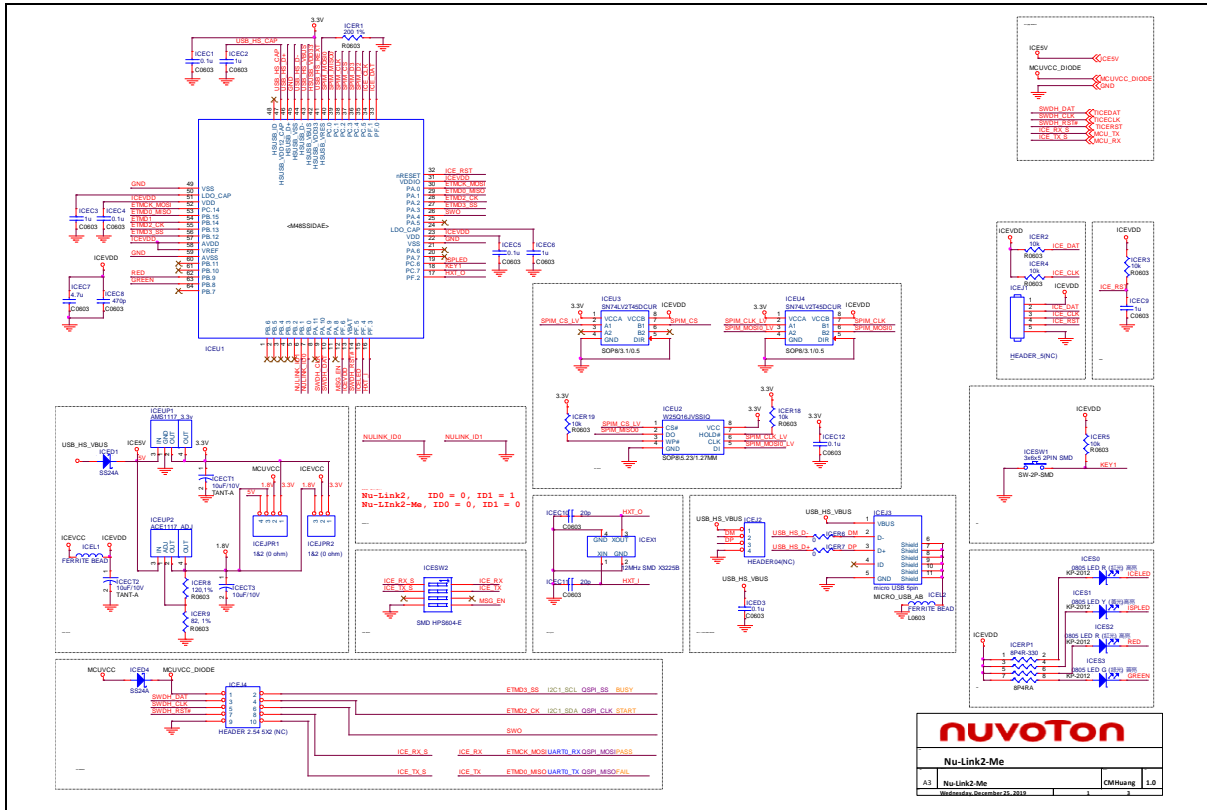


Figure 5-1 Nu-Link2-Me Circuit

5.2 M258KG Target Board

Figure 5-2 shows the M258KG target board circuit.

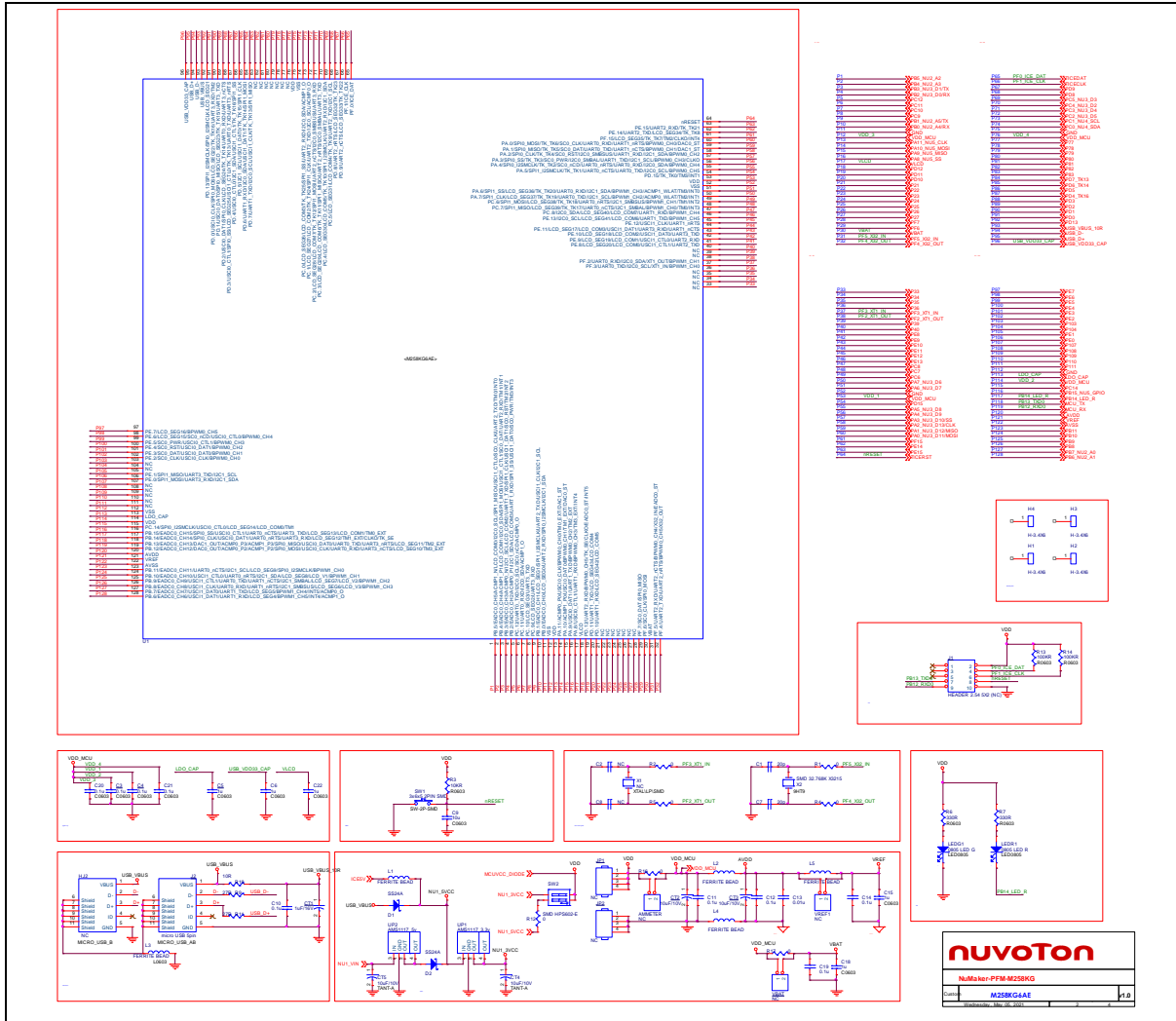


Figure 5-2 M258KG Target Board Circuit

5.3 Extension Connectors

Figure 5-3 shows extension connectors of NuMaker-M258KG.

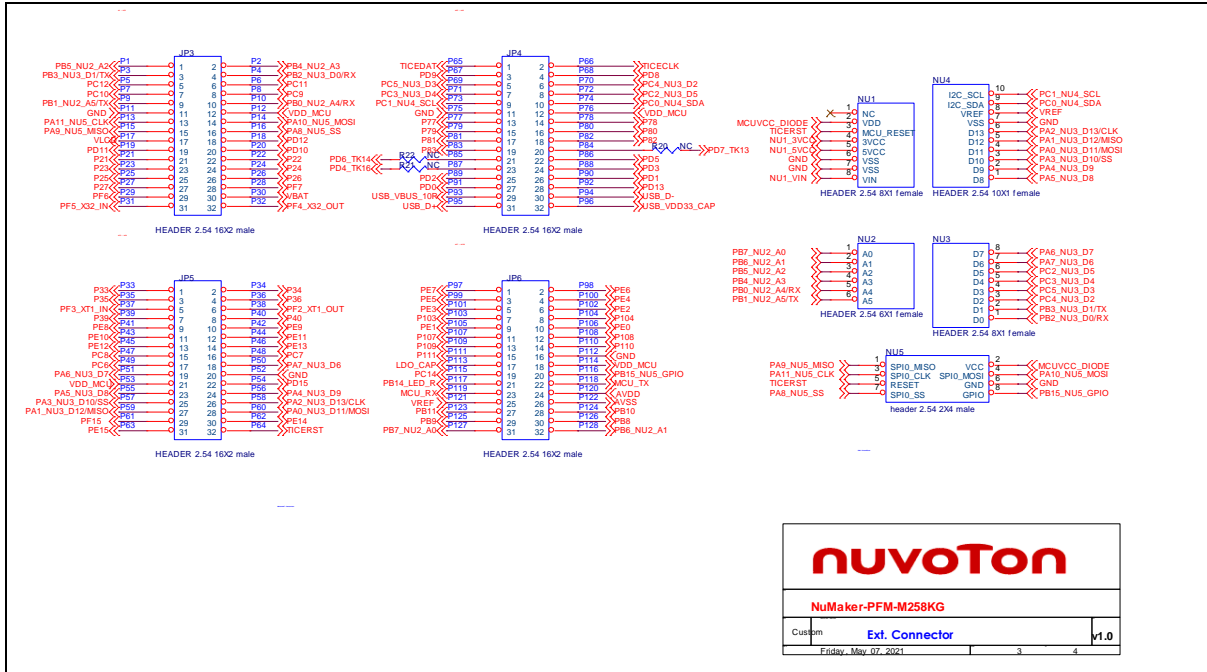


Figure 5-3 Extension Connectors Circuit

5.4 Touch Key

Figure 5-4 shows touch key of NuMaker-M258KG.

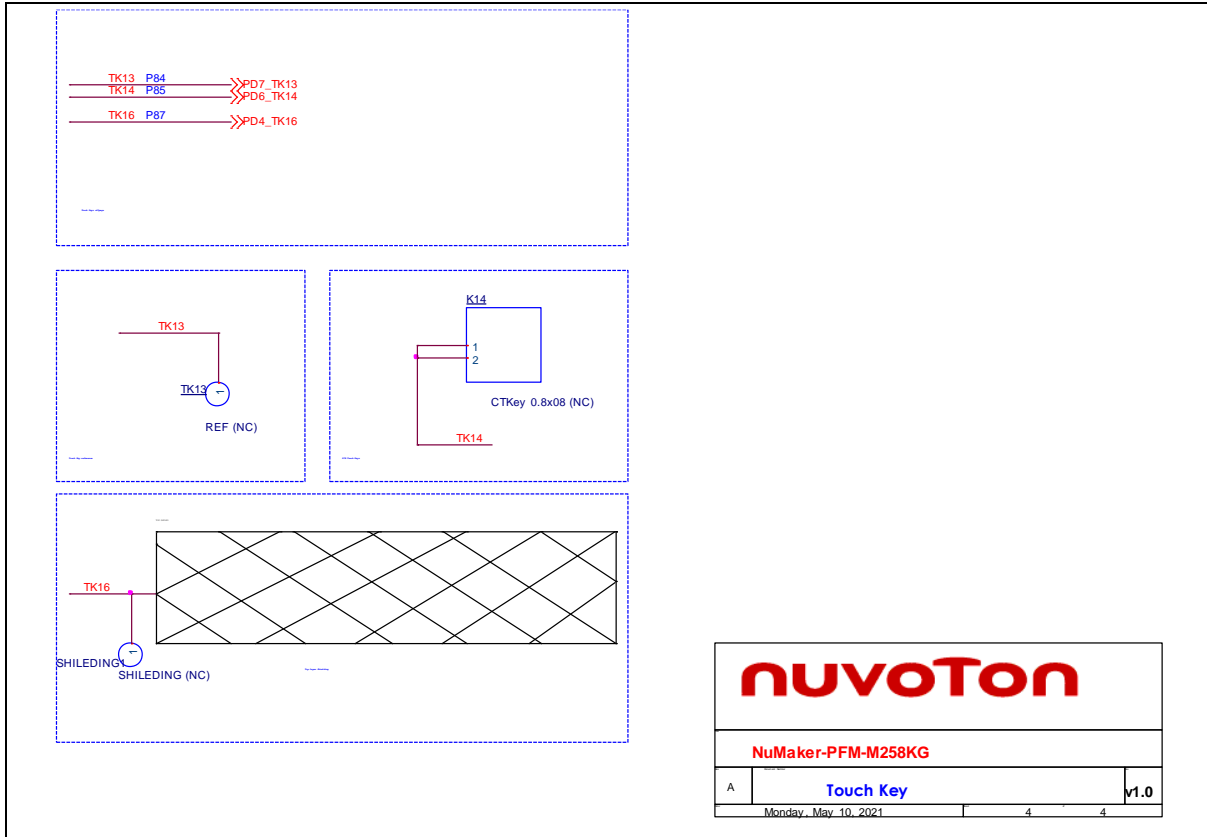


Figure 5-4 Touch Key Circuit

5.5 PCB Placement

Figure 5-5 and Figure 5-6 show the front and rear placement of NuMaker-M258KG.

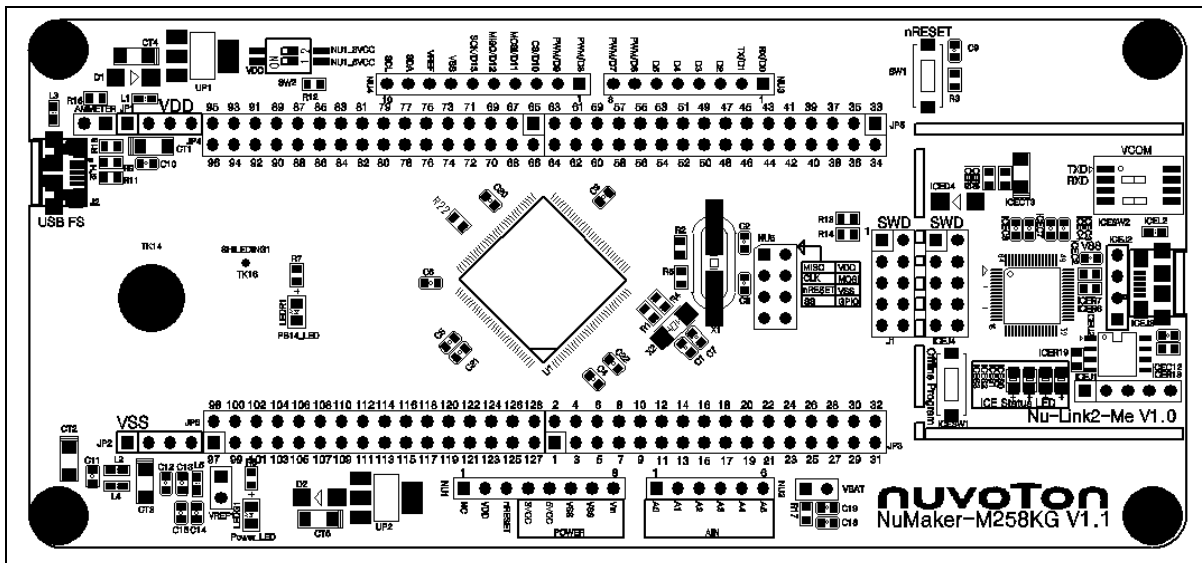


Figure 5-5 Front Placement

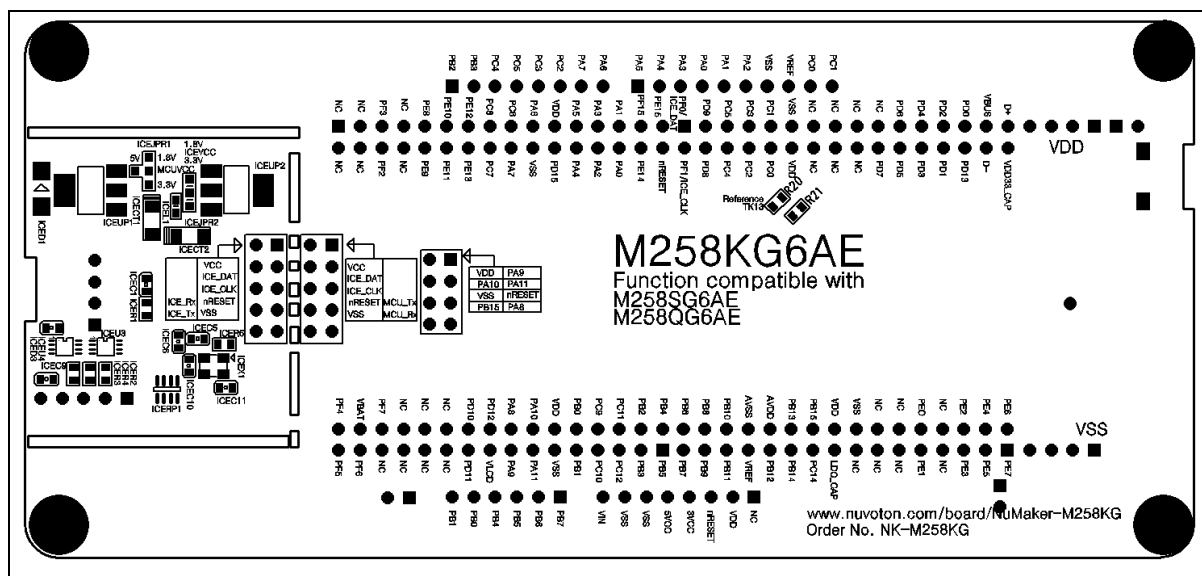


Figure 5-6 Rear Placement

6 REVISION HISTORY

Date	Revision	Description
2022.1.15	1.00	<ul style="list-style-type: none"> • Initial version

Important Notice

Nuvoton Products are neither intended nor warranted for usage in systems or equipment, any malfunction or failure of which may cause loss of human life, bodily injury or severe property damage. Such applications are deemed, “Insecure Usage”.

Insecure usage includes, but is not limited to: equipment for surgical implementation, atomic energy control instruments, airplane or spaceship instruments, the control or operation of dynamic, brake or safety systems designed for vehicular use, traffic signal instruments, all types of safety devices, and other applications intended to support or sustain life.

All Insecure Usage shall be made at customer’s risk, and in the event that third parties lay claims to Nuvoton as a result of customer’s Insecure Usage, customer shall indemnify the damages and liabilities thus incurred by Nuvoton.

*Please note that all data and specifications are subject to change without notice.
All the trademarks of products and companies mentioned in this datasheet belong to their respective owners.*