

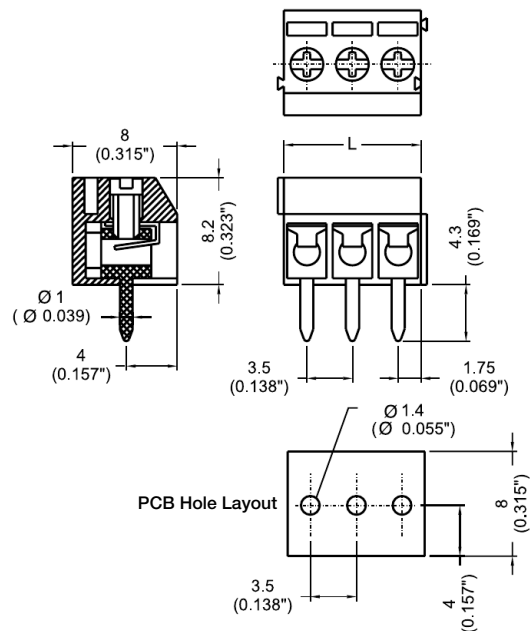
EM3123 Series
EuroMag Terminal Blocks
 3.50 Centers; Modular

SPECIFICATIONS

- Rating:** 6A, 300V
- Center Spacing:** 0.138" (3.50mm)
- Wire Range:** #16-26 AWG
- Housing Material:** Black Polyamide Type 6/6, 94V0
- Contact Material:** Tin-Plated Brass
- Wire Protector:** Stainless Steel
- Screw Size:** M2.0 Zinc-Plated Steel
- Operating Temperature:** 105°C (221°F) max., -33°C (-27°F) min.
- Torque Rating:** 2.0 lb-in.
- Recommended PCB Hole Diameters:** 0.055" (1.40mm)
- Construction:** Modular design features dovetails for interlocking to achieve longer lengths
- Agency Information:** File E62622; CE Certified



Dimensions - mm (in)



| Poles | L (mm) | Poles | L (mm) |
|-------|--------|-------|--------|
| 2 | 7.0 | 14 | 49.5 |
| 3 | 10.5 | 15 | 52.5 |
| 4 | 14.0 | 16 | 56.0 |
| 5 | 17.5 | 17 | 59.5 |
| 6 | 21.0 | 18 | 63.0 |
| 7 | 24.5 | 19 | 66.5 |
| 8 | 28.0 | 20 | 70.0 |
| 9 | 31.5 | 21 | 73.5 |
| 10 | 35.0 | 22 | 77.0 |
| 11 | 38.5 | 23 | 80.5 |
| 12 | 42.0 | 24 | 84.0 |
| 13 | 45.5 | | |

To convert to inches, divide by 25.4

Part Numbering System



Terminal Blocks:
Single Row

EuroMag Series
Spring & Screw

Edge Connectors,
One-Sided Boards

Compliance
References