



Washer for EMERGENCY STOP, yellow, with inscription: NOT-AUS, outer diameter 75 mm, inside diameter 22.5 mm, thickness 2 mm, Z=100-unit packaging

product brand name	SIRIUS ACT
product designation	EMERGENCY STOP plate
product type designation	3SU1
<b>General technical data</b>	
shock resistance for railway applications acc. to DIN EN 61373	Category 1, Class B
vibration resistance for railway applications acc. to DIN EN 61373	Category 1, Class B
<b>Accessories</b>	
material of accessory	Plastic
fastening method of label	without
marking of backing plate	EMERGENCY STOP
shape of backing plate	Round
color of backing plate	yellow/black (plate/text)
product function illuminated backing plate	No
<b>Certificates/ approvals</b>	
<b>Further information</b>	

Information- and Downloadcenter (Catalogs, Brochures,...)

<https://www.siemens.com/ic10>

Industry Mall (Online ordering system)

<https://mall.industry.siemens.com/mall/en/en/Catalog/product?mlfb=3SU1900-0BB31-0AS0-Z X90>

Cax online generator

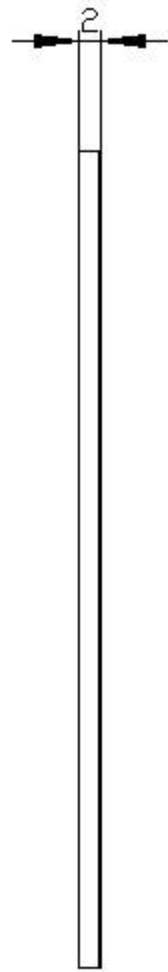
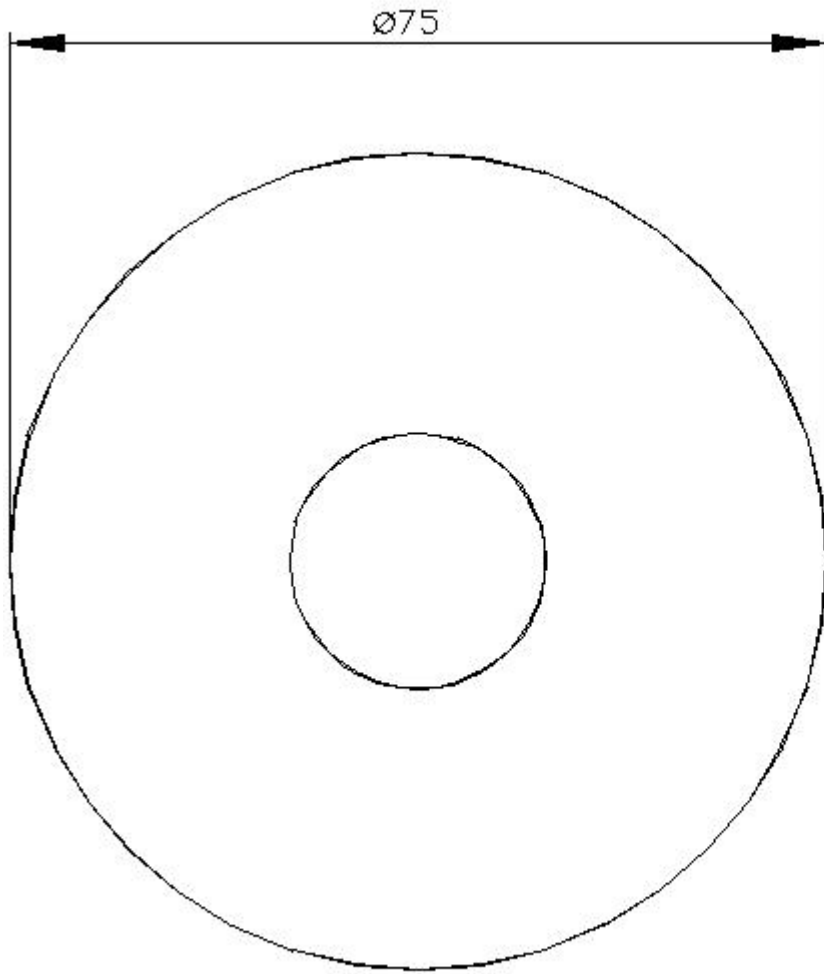
<http://support.automation.siemens.com/WW/CAXorder/default.aspx?lang=en&mlfb=3SU1900-0BB31-0AS0-Z X90>

Service&Support (Manuals, Certificates, Characteristics, FAQs,...)

<https://support.industry.siemens.com/cs/ww/en/ps/3SU1900-0BB31-0AS0-Z X90>

Image database (product images, 2D dimension drawings, 3D models, device circuit diagrams, EPLAN macros, ...)

[http://www.automation.siemens.com/bilddb/cax\\_de.aspx?mlfb=3SU1900-0BB31-0AS0-Z X90&lang=en](http://www.automation.siemens.com/bilddb/cax_de.aspx?mlfb=3SU1900-0BB31-0AS0-Z X90&lang=en)



last modified:

3/6/2020 