

Angled Precision RF Coax Connectors

RF Solutions

The Johnson™ Angled Precision RF PCB Mount Connectors are designed to offer mid-board launch of RF signals in tight enclosures as well as board to board applications, where there may be height restrictions for Vertical Mount and width restrictions for an end launch connector.

The mmWave connectors (1.85mm, 2.4mm, and 2.92mm) are designed for tight enclosures, utilizing a solderless contact to the PCB surface and two screws for quick and easy mounting to save on installation time and support frequencies up to 67 GHz. The thru-hole SMA connectors support frequencies up to 18 GHz (45° connector, soldered) and 26.5 GHz (30° connector, solderless).



Features

- Mating interfaces: 1.85mm, 2.4mm, 2.92mm, and SMA
- Gold-plated beryllium copper body
- Rated to 500 mating cycles
- Field-replaceable
- 30° Angled Precision RF PCB Mount Connectors
 - Frequency range:
 - 67 GHz for the 1.85mm, 50 GHz for the 2.4mm, 40 GHz for the 2.92mm, and 26.5 GHz for the SMA
 - VSWR performance: 1.35 max from DC to 67 GHz and 1.30 max from 26.5 GHz to 40 GHz
- 45° Angled Precision RF PCB Mount Connectors
 - Frequency range:
 - 67 GHz for the 1.85mm, 50 GHz for the 2.4mm, 40 GHz for the 2.92mm, and 18 GHz for the SMA
 - VSWR performance: 1.25 max from DC to 26.5 GHz and 1.5 max from 26.5 GHz to 67 GHz

Applications

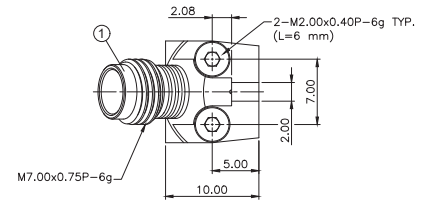
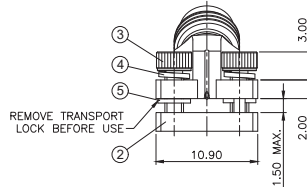
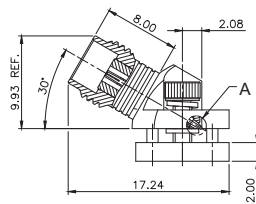
- Test & measurement - vector network analyzer (VNA)
- Instrumentation test fixture equipment
- Design validation testing
- Board characterization
- Semiconductor
- Military/defense
- Radar/satellite

Angled Precision RF Coax Connectors



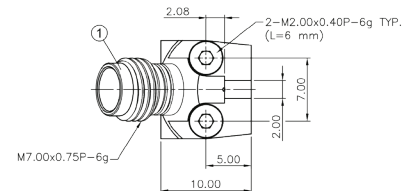
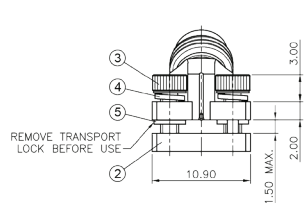
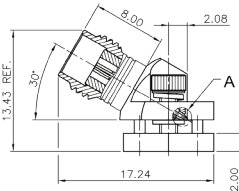
1.85 mm Jack, Solderless PCB Mount

Part Number	PCB Mount	Material	Impedance	VSWR	Frequency Range
148-0791-301	30°	Beryllium Copper, Gold-Plated	50 Ohms	1.35 Max to 67 GHz	DC - 67 GHz



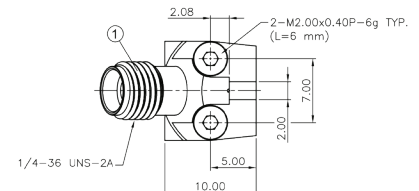
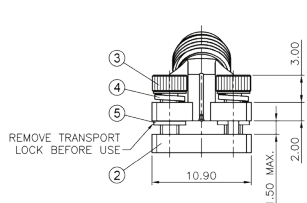
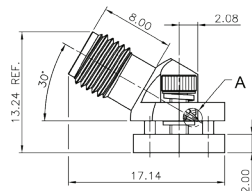
2.42 mm Jack, Solderless PCB Mount

Part Number	PCB Mount	Material	Impedance	VSWR	Frequency Range
147-0791-301	30°	Beryllium Copper, Gold-Plated	50 Ohms	1.30 Max to 50 GHz	DC - 50 GHz



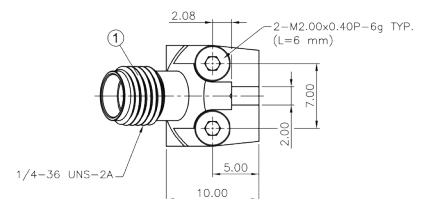
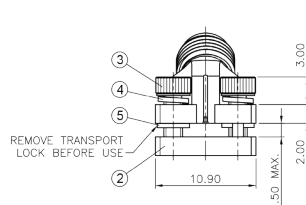
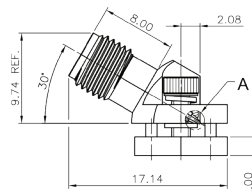
2.92 mm Jack, Solderless PCB Mount

Part Number	PCB Mount	Material	Impedance	VSWR	Frequency Range
145-0791-301	30°	Beryllium Copper, Gold-Plated	50 Ohms	1.30 Max to 40 GHz	DC - 40 GHz



SMA Jack, Solderless PCB Mount

Part Number	PCB Mount	Material	Impedance	VSWR	Frequency Range
142-0791-301	30°	Beryllium Copper, Gold-Plated	50 Ohms	1.30 Max to 26.5 GHz	DC - 26.5 GHz

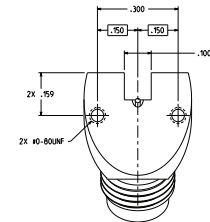
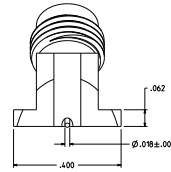
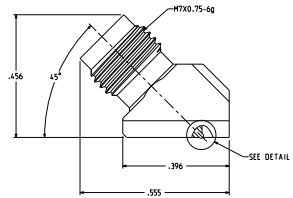


Angled Precision RF Coax Connectors



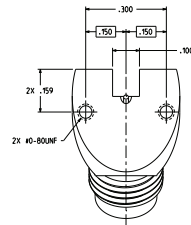
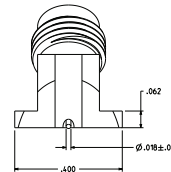
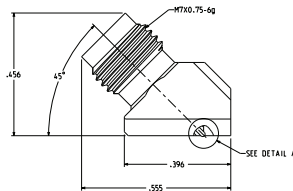
1.85 mm Jack, Solderless PCB Mount

Part Number	PCB Mount	Material	Impedance	VSWR	Frequency Range
148-0701-221	45°	Beryllium Copper, Gold-Plated	50 Ohms	1.5 Max to 67 GHz	DC - 67 GHz



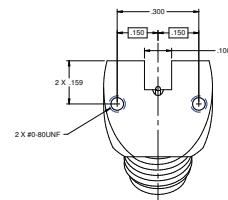
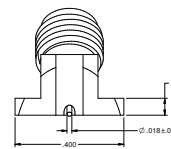
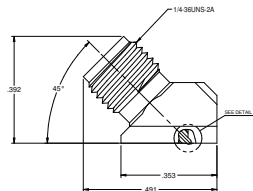
2.42 mm Jack, Solderless PCB Mount

Part Number	PCB Mount	Material	Impedance	VSWR	Frequency Range
147-0701-281	45°	Beryllium Copper, Gold-Plated	50 Ohms	1.5 Max to 67 GHz	DC - 50 GHz



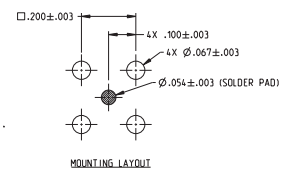
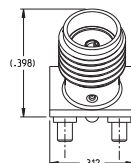
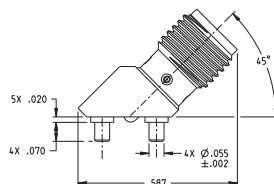
2.92 mm Jack, Solderless PCB Mount

Part Number	PCB Mount	Material	Impedance	VSWR	Frequency Range
145-0701-221	45°	Beryllium Copper, Gold-Plated	50 Ohms	1.25 Max to 26.5 GHz 1.5 Max to 40 GHz	DC - 40 GHz



SMA Jack, Solderless PCB Mount

Part Number	PCB Mount	Material	Impedance	VSWR	Frequency Range
142-0711-271	45°	Beryllium Copper, Gold-Plated	50 Ohms	1.5 Max	DC - 18 GHz



Asia Pacific
+86 21 5442 7668
ccs.asia.sales@as.cinch.com

Europe, Middle East & Africa
+44 (0) 1245 342060
cinchconnectivity@eu.cinch.com

North America
+1 507 833 8822
ccsorders@us.cinch.com
belfuse.com/cinch