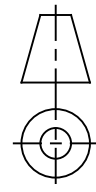
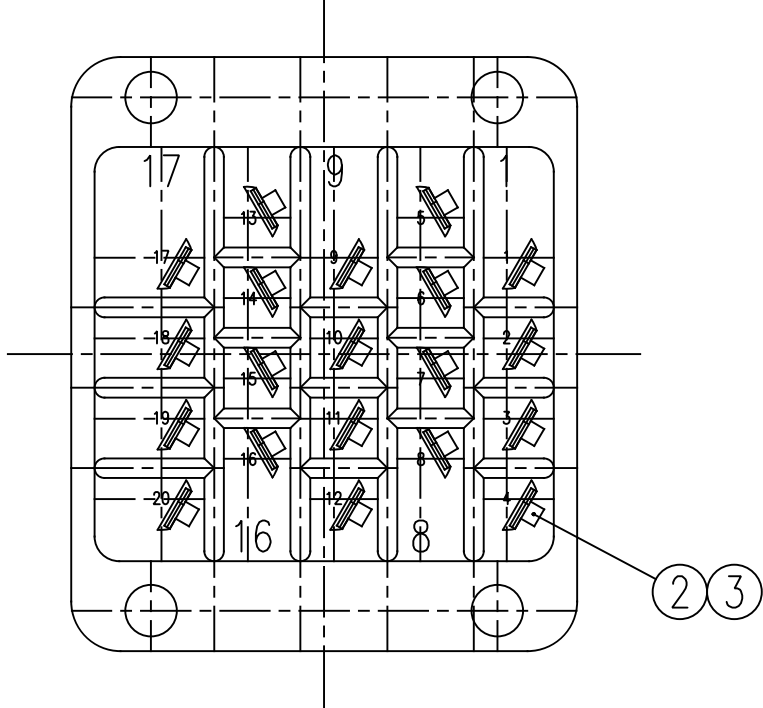
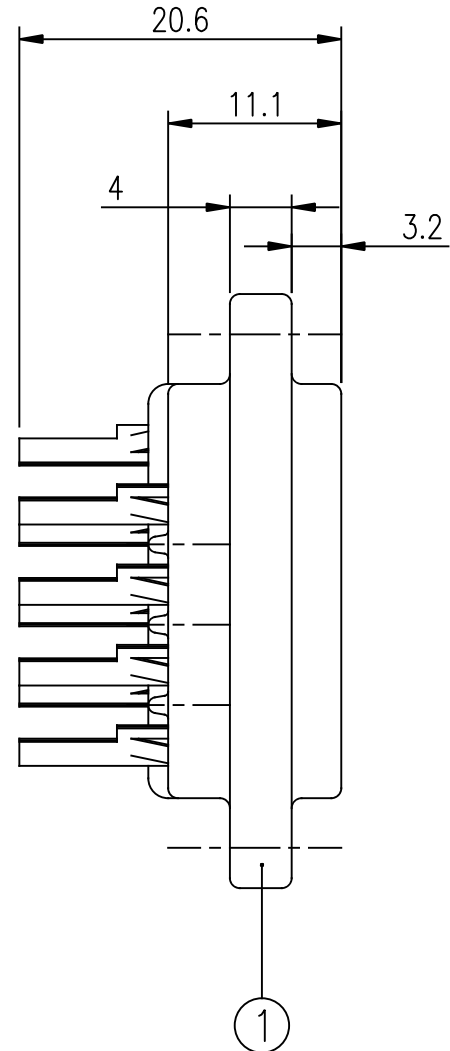
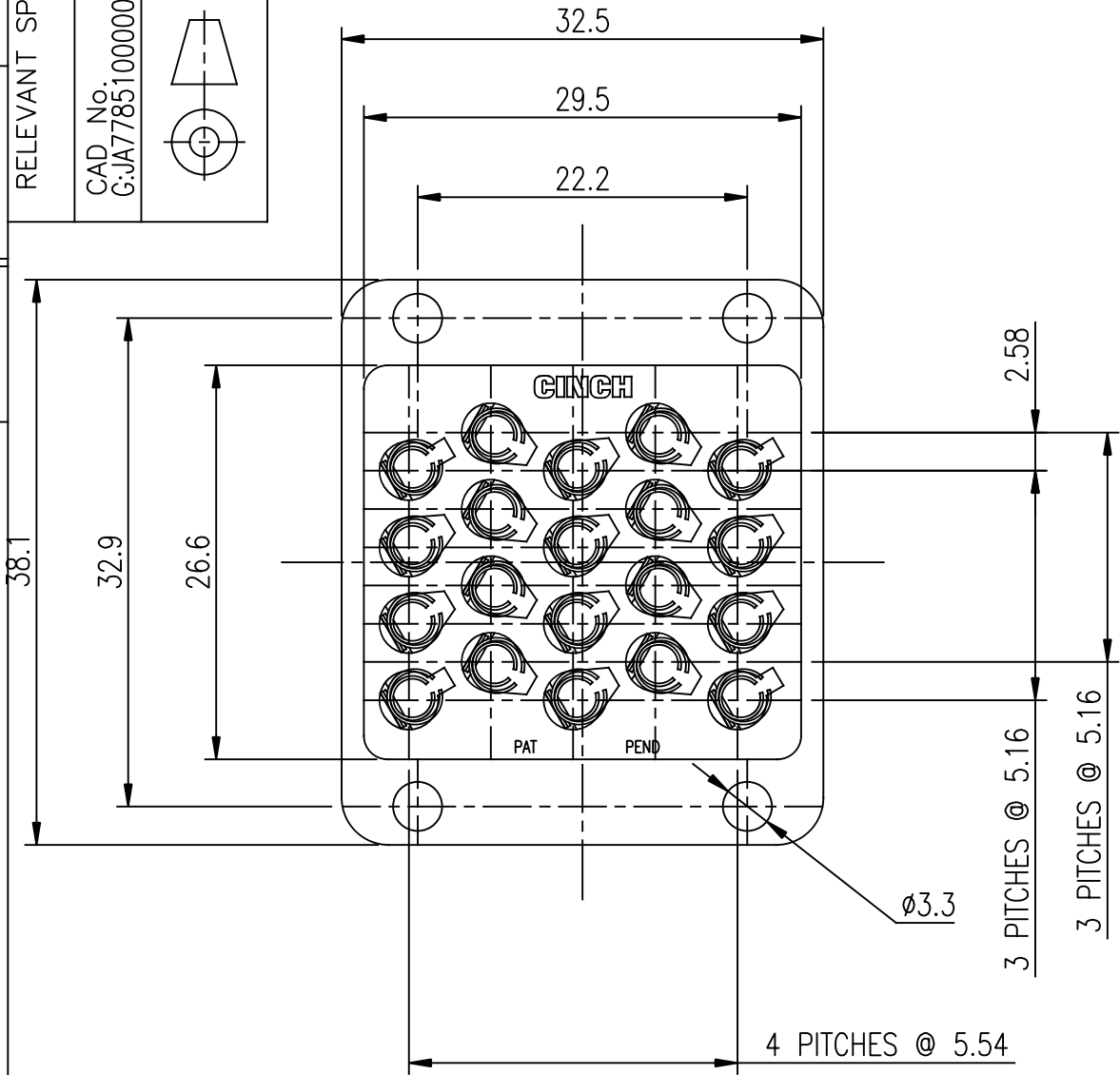


CUSTOMER DRAWING ONLY.

CINCH Connectors Ltd. WORKSOP, ENGLAND

JA

77851 00 000 000 000
 RELEVANT SPEC.
 SHEET 1 OF 1
 CAD No. G:JA7785100000000
 IF IN DOUBT - ASK
 ALL DIMENSIONS ARE IN mm

NOTES:

1. ALL DIMENSIONS ARE REFERENCE ONLY UNLESS STATED OTHERWISE.

THIS DRAWING IS COPYRIGHT AND IS ISSUED ON CONDITION IT IS NOT COPIED, REPRODUCED OR DISCLOSED TO A THIRD PARTY WITHOUT THE CONSENT IN WRITING OF CINCH CONNECTORS LTD.
 ATTENTION IS DRAWN TO THE FACT THAT THE ARTICLE DISCLOSED MAY BE COVERED BY BRITISH OR FOREIGN PATENTS, GRANTED OR PENDING OR REGISTERED DESIGN.

GENERAL TOLERANCE		TITLE J-TYPE 20 WAY SOCKET CONNECTOR ASSEMBLY	
DRN. R. MUSCROFT	DATE 06.06.07	SCALE 2:1	CHD
RAW MATERIAL		APP'D	
FINISHED HARDNESS	FINISH TREATMENT	FINISHED COLOUR	

A
B
C
D
E
F
G
H
J

1
2
3
4
5
6
7

A
CUST. ISS. 06.06.07

APP'D	DATE	MOD No.	ISSUE
		20	
		20	
		1	
		No. OFF	

CODE	DESCRIPTION	FINISH	No. OFF
	CONTACT	BRIGHT TIN	20
	CONTACT	BRIGHT TIN	20
	20W INSULATOR	C.F. POLYESTER	1
	1 _{T E M}		