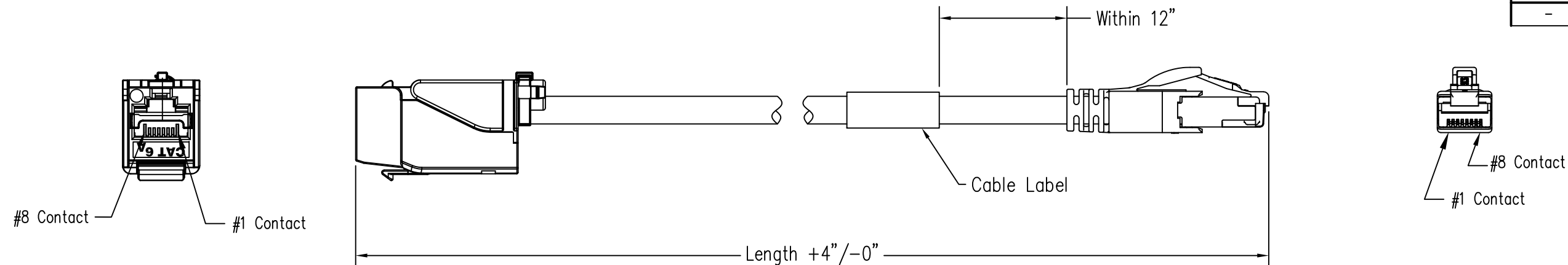


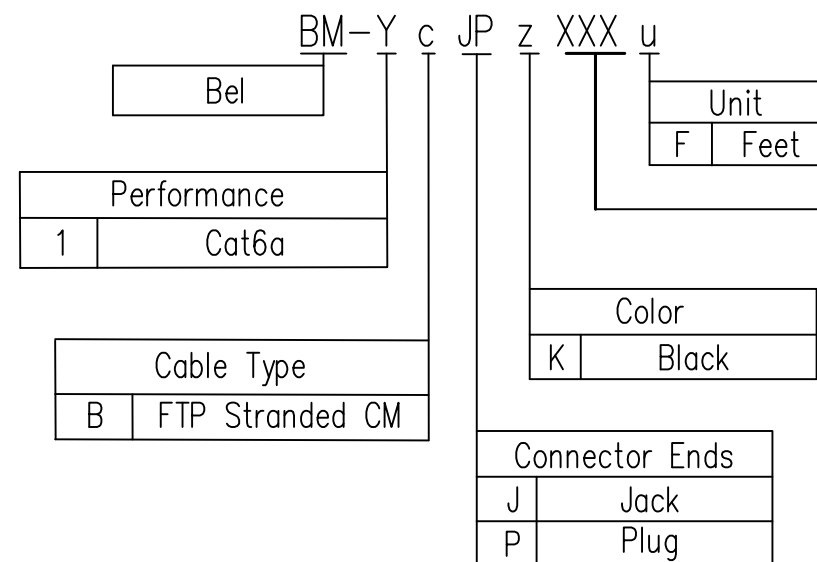
DATE	REV	ECN	APP'D. BY
11/30/20	A0	Released	GWL
-	-	-	-



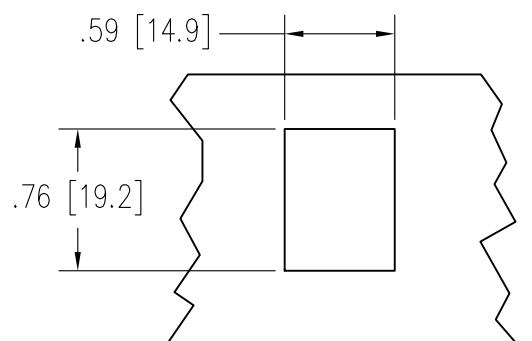
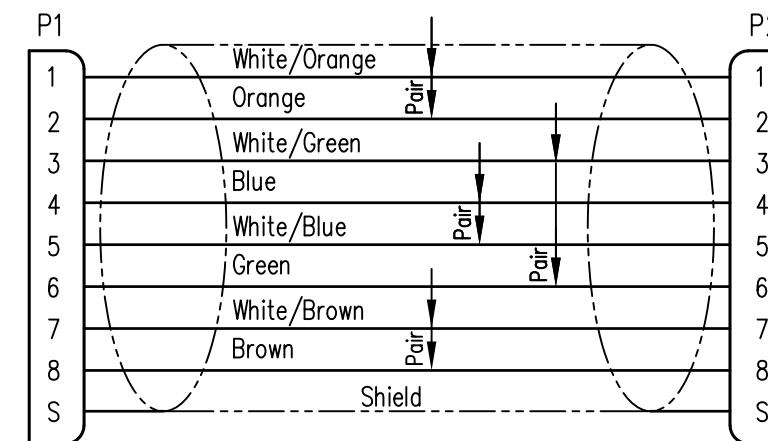
Notes:

- 1) Each cable assembly to be individually bagged.
- 2) 50μ" Gold plating on jack and plug contacts
- 3) Cable Construction:
 - 26AWG Stranded
 - (4) Twisted pairs twisted together with a central spline and wrapped with polyester binder to form a cable core.
 - PVC Jacket
- 4) Slimline Snagless Strain Relief
- 5) 100% Transmission Tested for Performance

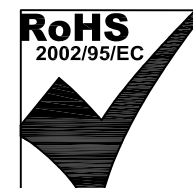
Part Number Structure



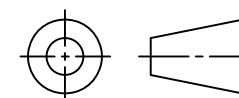
Wiring Map: 568B Standard



Recommended Panel Cutout



THIRD ANGLE PROJECTION

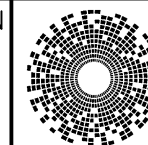


DO NOT SCALE DRAWING
DRAWING IS SUBJECT TO CHANGE WITHOUT NOTICE

DIMENSIONS: INCHES [METRIC]

UNLESS OTHERWISE SPECIFIED TOLERANCES ARE ±.005 [0.13] ANGLES ARE ± 1°

SHEET NO. 1 OF 1



bel

206 Van Vorst Street
Jersey City, NJ 07302
+1 201 432 0463
<http://www.belfuse.com>

TITLE: **Bel Cable Assembly, CAT 6A Jack To Cat6a plug, FTP Stranded CM**

THIS DRAWING AND THE SUBJECT MATTER SHOWN THEREON ARE CONFIDENTIAL AND THE PROPRIETARY PROPERTY OF BEL FUSE, INC. AND SHALL NOT BE REPRODUCED, COPIED, OR USED IN ANY MANNER WITHOUT PRIOR WRITTEN CONSENT OF BEL FUSE, INC.

DRN BY: GWL	DATE 11/23/20
APPD BY: AB	DATE 11/30/20
DWG NO. CT999234	REV. A0