

REV.	SPECIFICATION	ECN NO.	APPD.
R3			

### Material and Plating:

**Housing:** LCP, UL94V-0 , BLACK.

**Power Contacts:** High Conductivity Copper .

30u" Au+Pd/Ni on Contact Area and 80u" Min Matte Tin Plated on Solder Tail over nickel 50u" Min under plated .

**Signal Contacts :** Phosphor Bronze .

30u" Au+Pd/Ni on Contact Area and 80u" Min Matte Tin Plated on Solder Tail over nickel 50u" Min under plated .

### Electrical Characteristics:

**Current Rating:** Signal Pin 1.5 AMP.

Power Pin 12.5AMP(UL).

**Dielectric Withstanding Voltage:**

Signal Pin DC 500V For 1 minute.

Power Pin DC 1000V For 1 minute.

**Insulator Resistance:** Signal Pin 500MΩ min. at DC 500V.

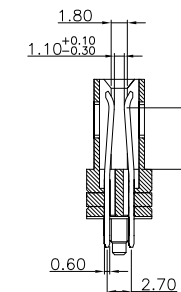
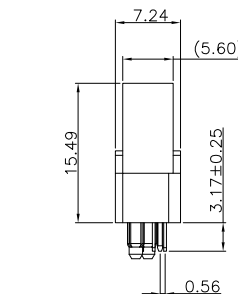
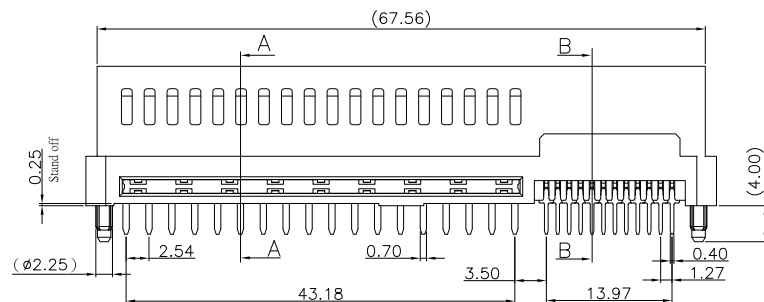
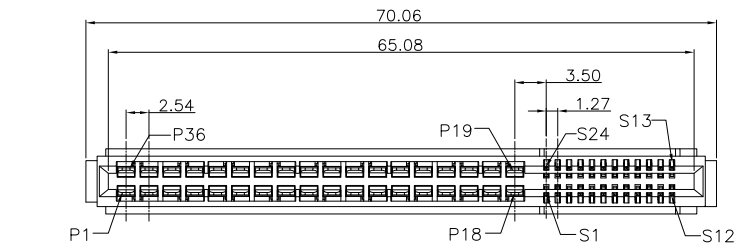
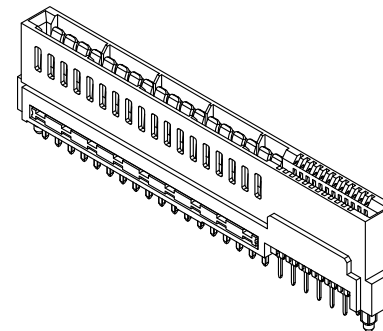
Power Pin 5000MΩ min. at DC 500V.

**Contact Resistance:** Signal Pin 25mΩ max.

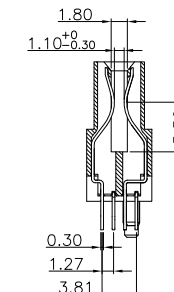
Power Pin 0.6mΩ max.

**Operating Temperature:** -55°C ~+105°C .

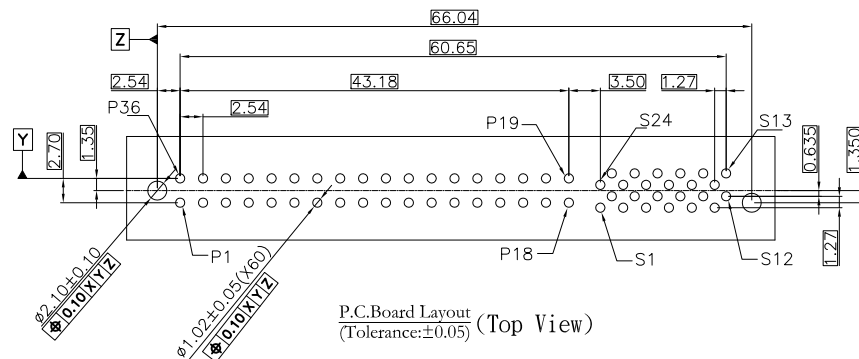
**\*RoHS Compliant**



Section A-A  
Scale: 1:1



Section B-B  
Scale: 1:1



P.C.Board Layout  
(Tolerance:±0.05) (Top View)

Tolerances	Dwg. No.	9302-D0000-011
X=±0.50	Projection	
.X=±0.25	Unit	mm
.XX=±0.15	Scale	1:1
	Drawn By	GYJ 09/14'23

Title:

9302 Series  
High Power and Signal  
Edge Card Connector

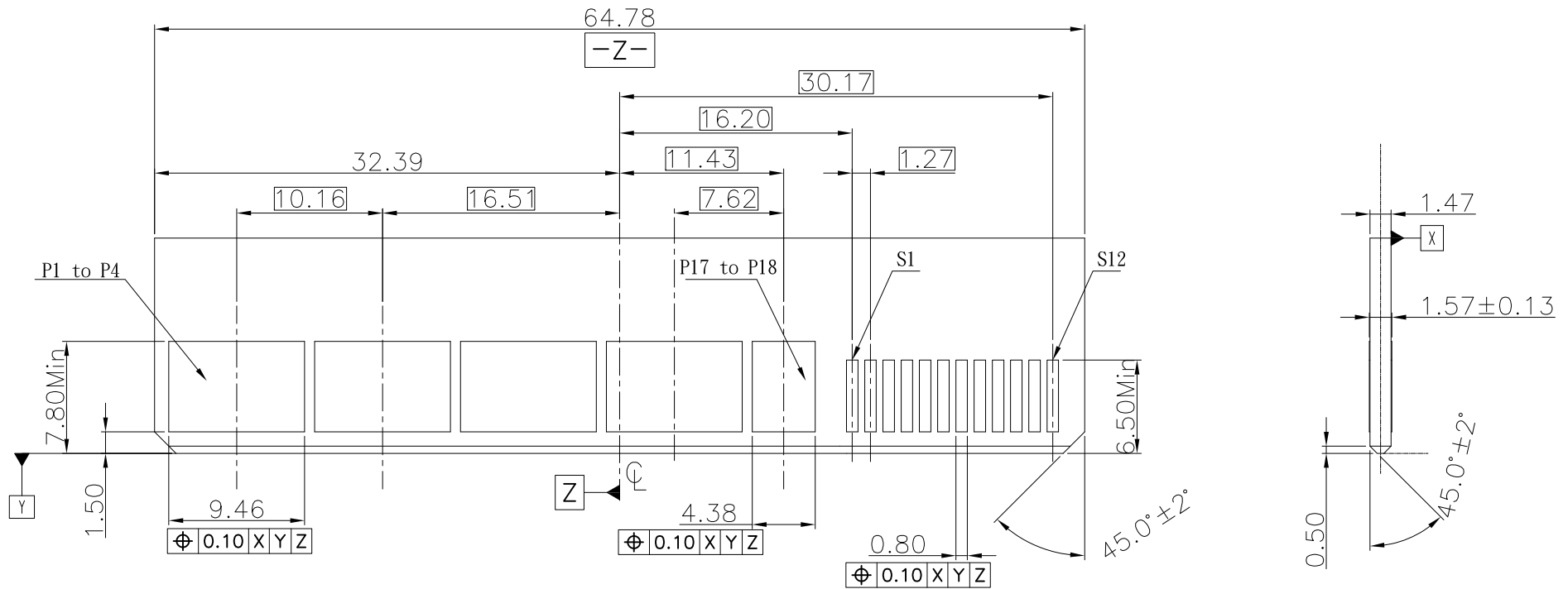
**OUPIN**

OUPIN ELECTRONIC(KUNSHAN) CO., LTD.



P/N:9302-2A1S24P11ACB30DA

SHEET	1/2	Ver.No.	R3
-------	-----	---------	----

REV.	SPECIFICATION	ECN NO.	APPD.
R3			



RECOMMENDED MATTING BOARD FOOTPRINT  
(Tolerance:±0.05)

Tolerances	Dwg. No.	9302-D0000-011		Title:  9302 Series High Power and Signal Edge Card Connector				
X=±0.50	Projection				OUPIIN ELECTRONIC(KUNSHAN) CO., LTD.			
.X=±0.25	Unit   mm	Scale	1:1		P/N: 9302-2A1S24P11ACB30DA			
.XX=±0.15	Drawn By	GYJ 09/14'23	®		SHEET	2/2	Ver.No.	R3