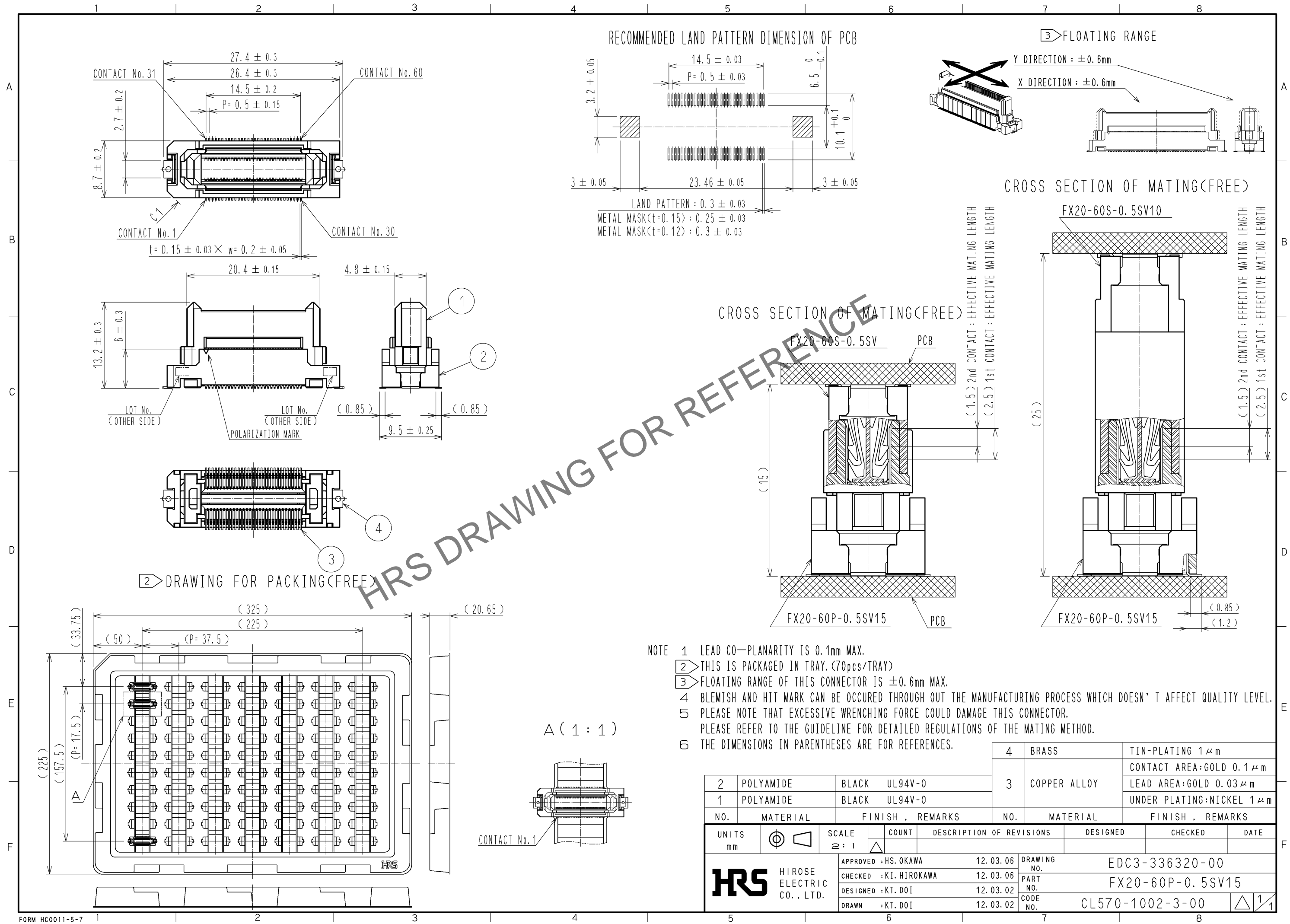
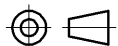





Aug.1.2023 Copyright 2023 HIROSE ELECTRIC CO., LTD. All Rights Reserved.  
In case of consideration for using Automotive equipment / device which demand high reliability, kindly contact our sales window correspondents.



- NOTE
- 1 LEAD CO-PLANARITY IS 0.1mm MAX.
  - 2 THIS IS PACKAGED IN TRAY. (70pcs/TRAY)
  - 3 FLOATING RANGE OF THIS CONNECTOR IS  $\pm 0.6\text{mm}$  MAX.
  - 4 BLEMISH AND HIT MARK CAN BE OCCURED THROUGH OUT THE MANUFACTURING PROCESS WHICH DOESN' T AFFECT QUALITY LEVEL.
  - 5 PLEASE NOTE THAT EXCESSIVE WRENCHING FORCE COULD DAMAGE THIS CONNECTOR.  
PLEASE REFER TO THE GUIDELINE FOR DETAILED REGULATIONS OF THE MATING METHOD.
  - 6 THE DIMENSIONS IN PARENTHESES ARE FOR REFERENCES.

THE DIMENSIONS IN PARENTHESES ARE FOR REFERENCES.

2	POLYAMIDE	BLACK	UL94V-0	3	COPPER ALLOY	TIN-PLATING 1 μm		
1	POLYAMIDE	BLACK	UL94V-0			CONTACT AREA:GOLD 0.1 μm		
						LEAD AREA:GOLD 0.03 μm		
						UNDER PLATING:NICKEL 1 μm		
NO.	MATERIAL	FINISH , REMARKS		NO.	MATERIAL	FINISH , REMARKS		
UNITS mm		SCALE 2:1		COUNT	DESCRIPTION OF REVISIONS	DESIGNED	CHECKED	DATE
 HIROSE ELECTRIC CO., LTD.		APPROVED : HS. OKAWA	12.03.06	DRAWING NO.	EDC3-336320-00			
		CHECKED : KI. HIROKAWA	12.03.06	PART NO.	FX20-60P-0.5SV15			
		DESIGNED : KT. DOI	12.03.02	CODE NO.	CL570-1002-3-00			
		DRAWN : KT. DOI	12.03.02	 1/1				