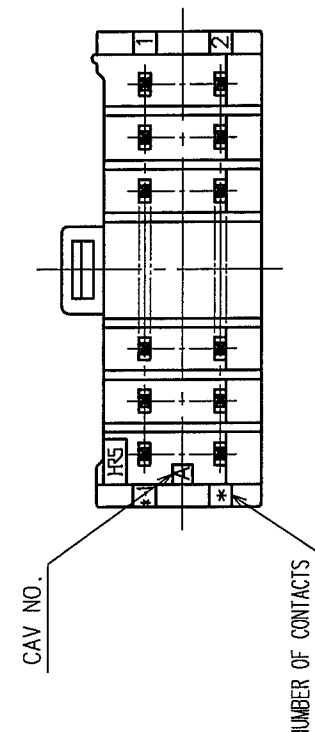
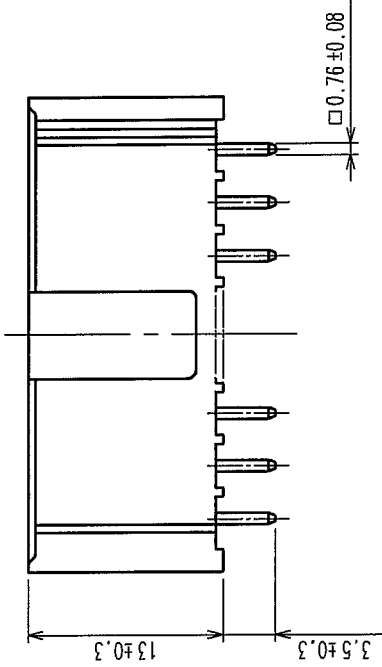
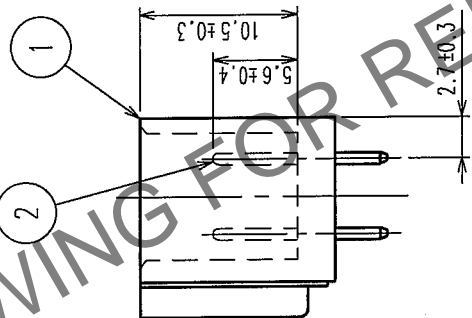
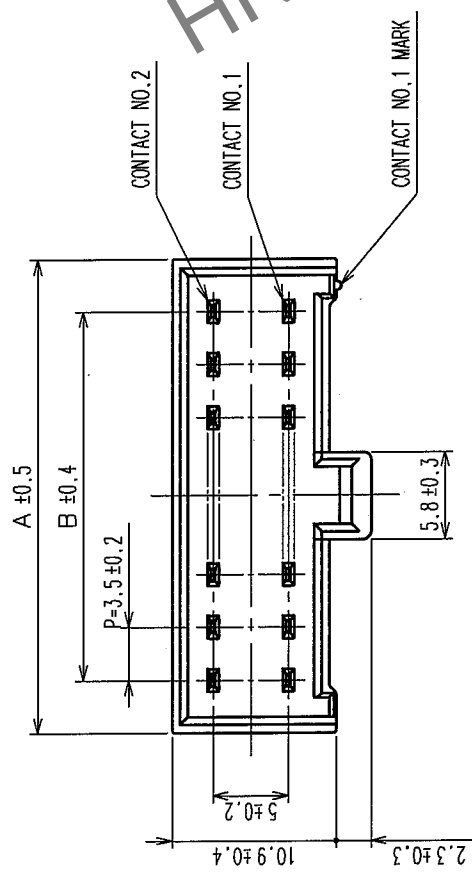


In case of consideration for using Automotive equipment / device which demand high reliability, kindly contact our sales window correspondents.

1 2 3 4 5 6 7 8

COUNT	DESCRIPTION OF REVISIONS	BY	CHKD	DATE	COUNT	DESCRIPTION OF REVISIONS	BY	CHKD	DATE
△				..	△				..
△				..	△				..
△				..	△				..



NOTE 1 : RECOMMENDED PC BOARD HOLE DIAMETER $\phi 1.3 \pm 0.1$

CODE NO.	PART NO.	NUMBER OF CONTACTS	A	B
CL547-0083-2-06	MDF6-4DP-3.5DSA(06)	4	10.5	3.5
CL547-0084-5-06	MDF6-6DP-3.5DSA(06)	6	14.0	7.0
CL547-0085-8-06	MDF6-8DP-3.5DSA(06)	8	17.5	10.5
CL547-0086-0-06	MDF6-10DP-3.5DSA(06)	10	21.0	14.0
CL547-0087-3-06	MDF6-12DP-3.5DSA(06)	12	24.5	17.5
CL547-0088-6-06	MDF6-14DP-3.5DSA(06)	14	28.0	21.0
CL547-0089-9-06	MDF6-16DP-3.5DSA(06)	16	31.5	24.5
CL547-0090-8-06	MDF6-18DP-3.5DSA(06)	18	35.0	28.0
CL547-0091-0-06	MDF6-20DP-3.5DSA(06)	20	38.5	31.5

1	POLYAMIDE	WHITE, UL94V-0	2	BRASS	CONTACT AREA: GOLD PLATED 0.2 μ m min LEAD AREA: TIN-COPPER PLATED 1 μ m min UNDER PLATING: NICKEL 1 μ m min			
NO.	MATERIAL	FINISH, REMARKS	NO.	MATERIAL	FINISH, REMARKS			
CODE NO. (OLD)			DRAWN	DESIGNED	CHECKED	APPROVED	RELEASED	
CL			M. Nakamoto '04.04.16	H. Umehara 04-04-16	J. Ogo 04-04-16	J. Ogo 04-04-16		
DRAWING NO.		PART NO.						
EDC3-160046-11		MDF6-*DP-3.5DSA(06)						
SCALE	10: 1							
UNITS	mm							
HRS		HIROSE ELECTRIC CO., LTD		CODE NO.		CL547-		
				1		1		

TO