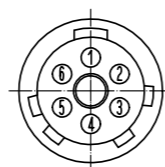
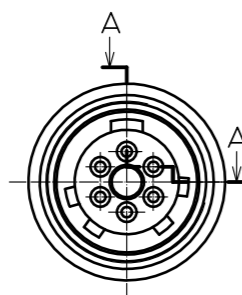
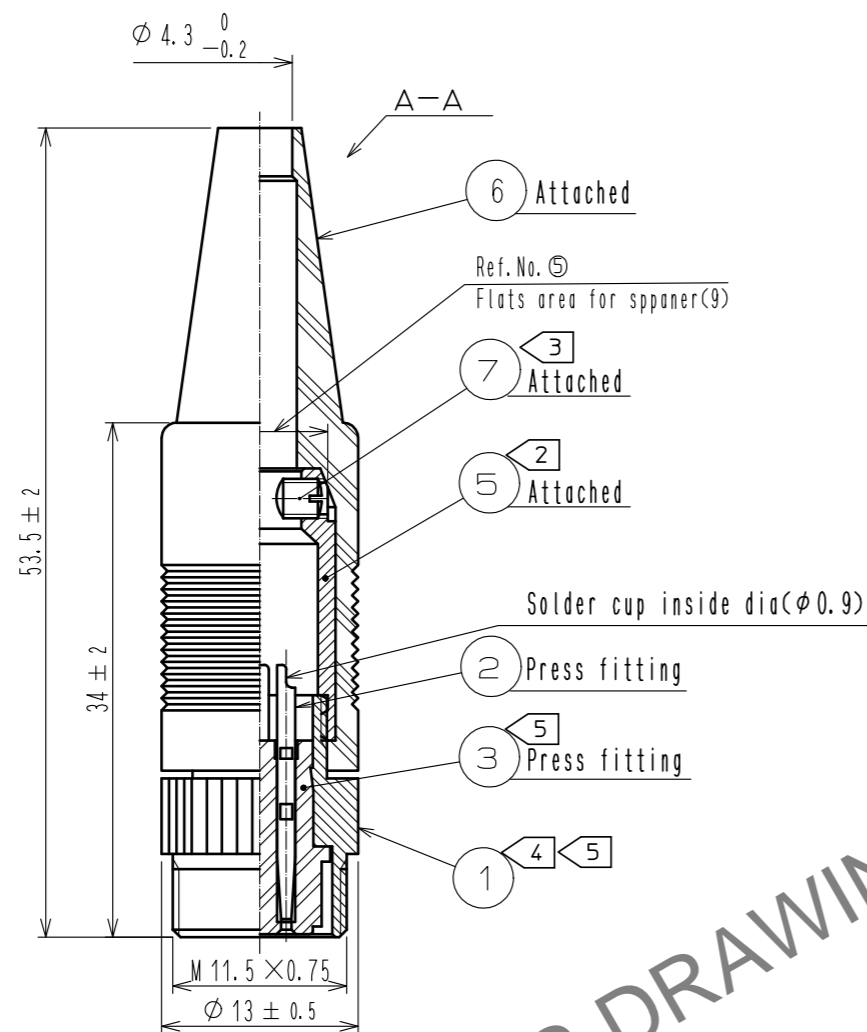
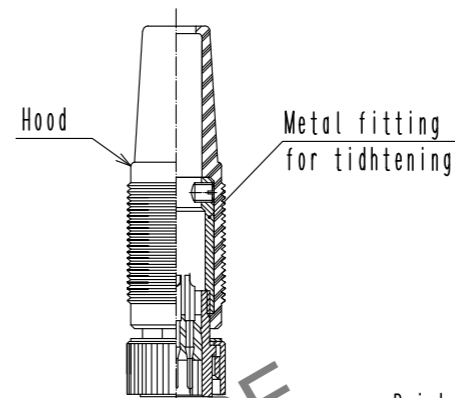


Oct.1.2023 Copyright 2023 HIROSE ELECTRIC CO., LTD. All Rights Reserved.
In case of consideration for using Automotive equipment / device which demand high reliability, kindly contact our sales window correspondents.



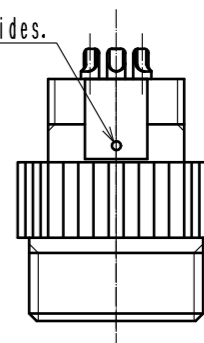
The contact arrangements
from the mating face

Appearance of Mating plug connector
(as an example) (1:1)



External view of
only Ref. No. ①, ② and ③.

Prick punch: 2 positions
each on 2 sides.



- Notes
- 1 Applicable metal clamping: SR30-P (CL103-0266-5-00)
 - 2 The recommended clamp torque of ref. No. ⑤ : 1.5~2N·m.
 - 3 The recommended clamp torque of ref. No. ⑦ : 0.1~0.15N·m.
 - 4 Apply Loctite 243, HENKEL JAPAN or equivalent to the threaded portion of ref. No. ① and ⑦ in order to prevent loosening.
 - 5 Rotation torque resistance of ref. No. ① and No. ③ are approx. 0.7 N·m. Do not rotate Hood and Metal fitting for tightening with the plug mated condition.
 - 6 Rotation examples of ref. No. ① and ⑤ are shown.
 - 7 Applicable tools
Clamping tool for SR30-P: SR30-10PE-T (CL150-0001-8-00)
 - 8 The cable pull and twisting strength and other characteristics may differ, depending on the cable structure, please confirm before the use. Also, please confirm the workability in advance, as it may be tight when passing the cable through the part No. ⑥ bushing.

3	Polyacetal	(White)	7	Steel	Nickel plating	JIS B 1117 M2.6X0.45X3
2	Phosphor bronze	Surface plating : Gold plating 0.2μm min. Under plating : Nickel plating 3μm min.	6	Chloroprene rubber	(Black)	
1	Brass	Chrome plating	5	Brass	Nickel plating	
NO.	MATERIAL	FINISH . REMARKS	NO.	MATERIAL	FINISH . REMARKS	
UNITS mm		SCALE 2 : 1	COUNT 	DESCRIPTION OF REVISIONS	DESIGNED	CHECKED
HIROSE ELECTRIC CO., LTD.		APPROVED : TP. KOMATSU	20221202	DRAWING NO.	EDC-005968-32-00	
		CHECKED : HY. KOBAYASHI	20221202	PART NO.	SR30-10JE-6S(32)	
		DESIGNED : HY. KISHI	20221202	CODE NO.	CL0103-0259-0-32	
		DRAWN : KR. SUZUKI	20221130			