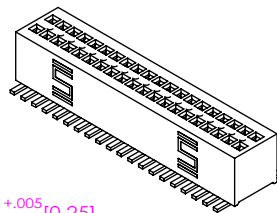


DO NOT SCALE FROM THIS PRINT



CLE-1XX-XX-X-DV-XX

No OF POSITIONS

-04 THRU -90  
(PER ROW)

LEAD STYLE

-01  
(USE C-80-01-X)

PLATING SPECIFICATION

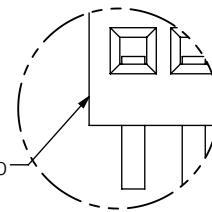
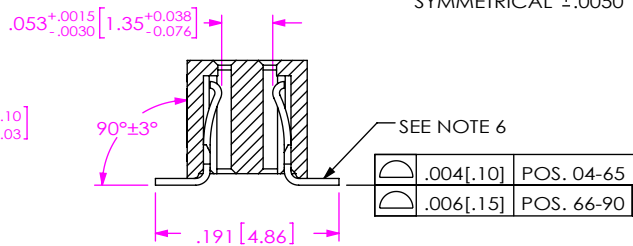
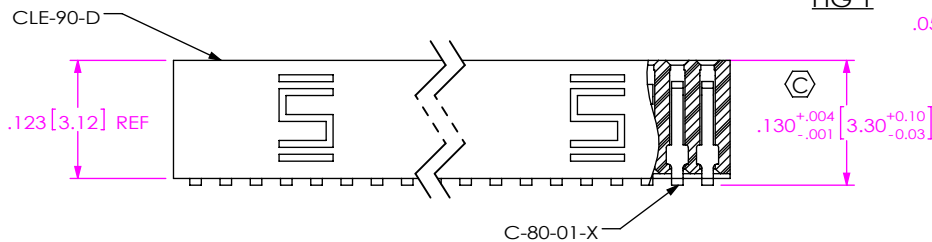
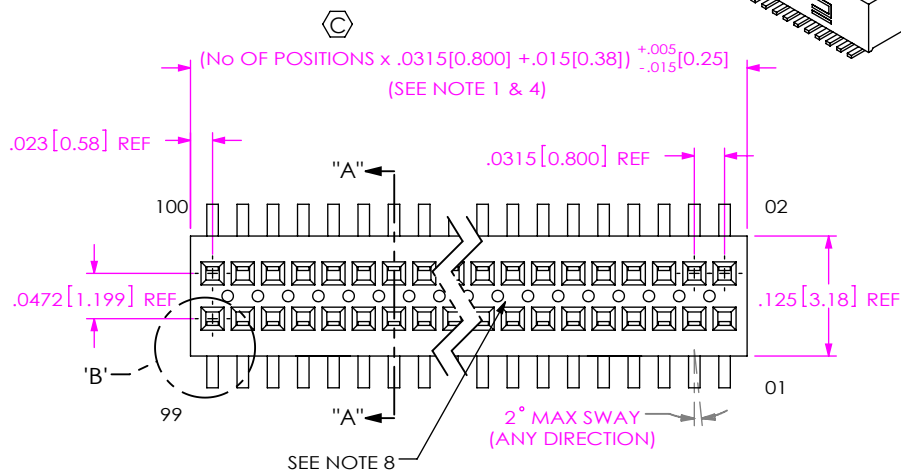
-F: 3µ" FLASH SELECTIVE GOLD ON ENTIRE CONTACT  
-G: 10µ" LIGHT GOLD ON ENTIRE CONTACT

OPTION

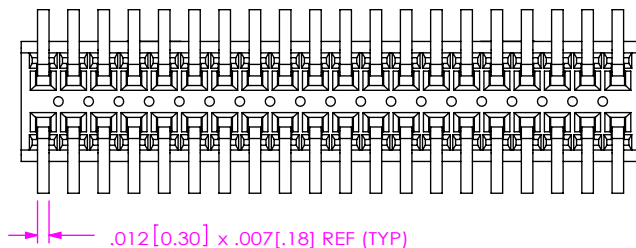
-P: PICK & PLACE PAD (SEE FIG 2, SHT 2)  
(AVAILABLE ON POSITIONS -08 THRU -90 ONLY)  
(USE LMP-10)  
-TR: TAPE & REEL PACKAGING (SEE NOTE 9)  
-FR: FULL REEL QTY. TAPE & REEL (SEE NOTE 10)  
-A: ALIGNMENT PIN (SEE FIG 3 & 4, SHT 2)  
(MOLDED TO POSITION OR STAKED)  
(SAMTEC DISCRETION WHICH -A PIN IS USED)  
(STAKE 7 POSITIONS MIN)  
(MOLD 4 POSITION MIN)  
-K: POLYIMIDE FILM PAD  
(AVAILABLE ON POS. 8 THRU 90 ONLY)  
(SEE FIG 5, SHT 2)  
(USE K-DOT-.157-.250-.005)

ROW SPECIFICATION

-D: DOUBLE ROW - VERTICAL  
(USE CLE-90-D)



DETAIL 'B'  
SCALE 10 : 1



NOTES:

1. REPRESENTS A CRITICAL DIMENSION.
2. NOTE DELETED.
3. MINIMUM PUSHOUT FORCE: .5 LB.
4. WILL LOSE TWO POSITIONS FOR EVERY CUT MADE. MAXIMUM CUT FLASH TO BE .010 [0.25] WITH NO FLASH IN HOLES OR EXTENDING BELOW LEADS.
5. NOTE DELETED.
6. MAXIMUM BURR ALLOWANCE: .003 [0.08]
7. ENDWALL AFTER CUTTING: .0115±.0025 [0.292±0.064]
8. VOIDS ON TOP SURFACE TO BE LOCATED AT VENDOR DISCRETION TO CONTROL PART WARPAGE.
9. -TR OPTION ORDERS INVOLVING PARTIAL REEL QUANTITIES MAY BE PACKAGED ACCORDING TO THE SAMTEC PACKAGING EFFICIENCY STANDARDS (SPES) FOUND ON WWW.SAMTEC.COM.
10. -FR OPTIONS WILL BE SHIPPED AT THE MAX QUANTITY PER REEL, BASED ON OPTIONS SELECTED.

UNLESS OTHERWISE SPECIFIED, DIMENSIONS ARE IN INCHES.

TOLERANCES ARE:

DECIMALS ANGLES  
.XX: ±.01[0.3] 2°  
.XXX: ±.005[0.13]  
.XXXX: ±.0020[0.051]

PROPRIETARY NOTE

THIS DOCUMENT CONTAINS CONFIDENTIAL AND PROPRIETARY INFORMATION AND ALL DESIGN, MANUFACTURING, REPRODUCTION, USE, PATENT RIGHTS AND SALES RIGHTS ARE EXPRESSLY RESERVED BY SAMTEC, INC. THIS DOCUMENT SHALL NOT BE DISCLOSED, IN WHOLE OR PART, TO ANY UNAUTHORIZED PERSON OR ENTITY NOR REPRODUCED, TRANSFERRED OR INCORPORATED IN ANY OTHER PROJECT IN ANY MANNER WITHOUT THE EXPRESS WRITTEN CONSENT OF SAMTEC, INC.

MATERIAL: DO NOT SCALE DRAWING SHEET SCALE: 5:1  
INSULATOR: LCP, UL 94 VO, COLOR: BLACK

CONTACT: BeCu 190 ALLOY [TM04]  
THICKNESS: .007[0.18]REF



520 PARK EAST BLVD, NEW ALBANY, IN 47150  
PHONE: 812-944-6733 FAX: 812-948-5047  
e-Mail info@SAMTEC.com code 55322

DESCRIPTION:  
.8MM x 1.2MM C.L. SOCKET STRIP ASSEMBLY

DWG. NO. CLE-1XX-XX-X-DV-XX

BY: PURVIS 10/23/95 SHEET 1 OF 2

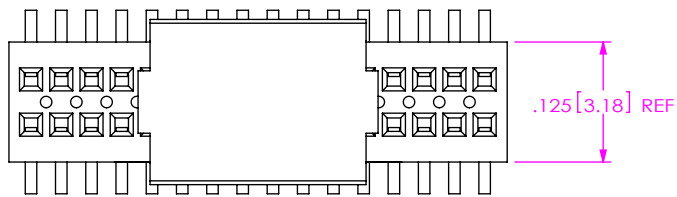


FIG 2  
-P OPTION  
8 POSITIONS MIN

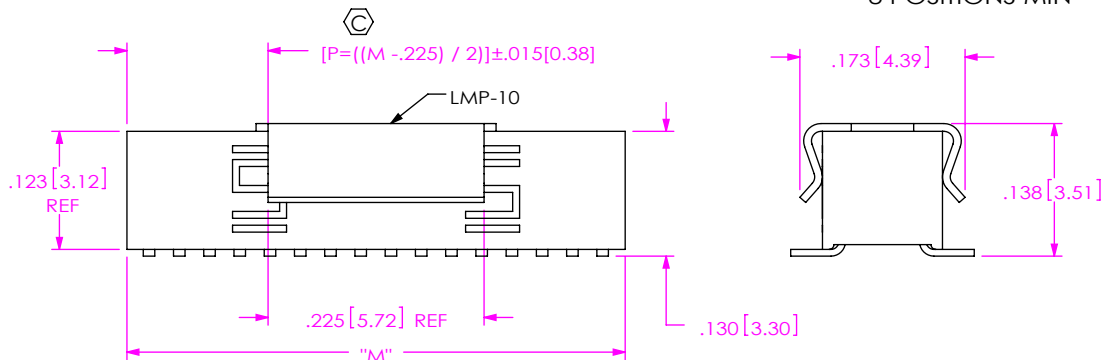
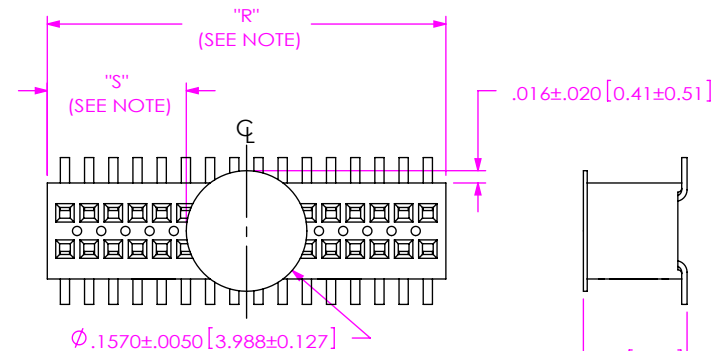


FIG 5  
-K: POLYIMIDE FILM PAD  
8 POSITIONS MIN



NOTE: "R" = USED MEASURED DIMENSION (REF)  
"S" = [ ("R" - .1575 [4.00]) / 2 ] ±.020[0.51]

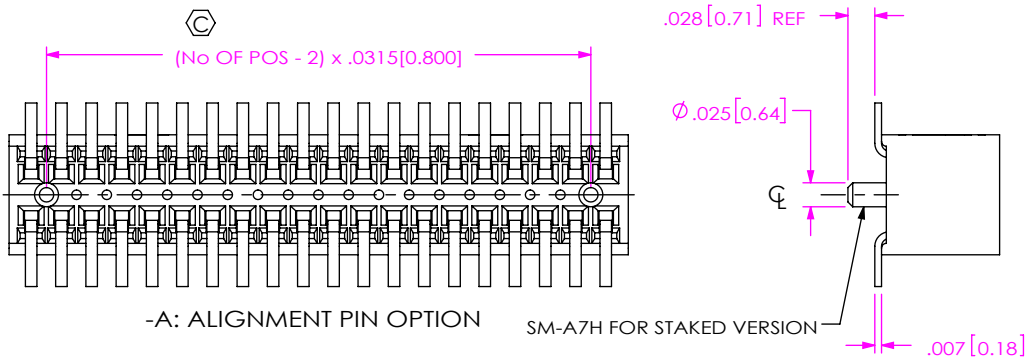


FIG 3  
-A STAKED OPTION  
7 POSITIONS MIN

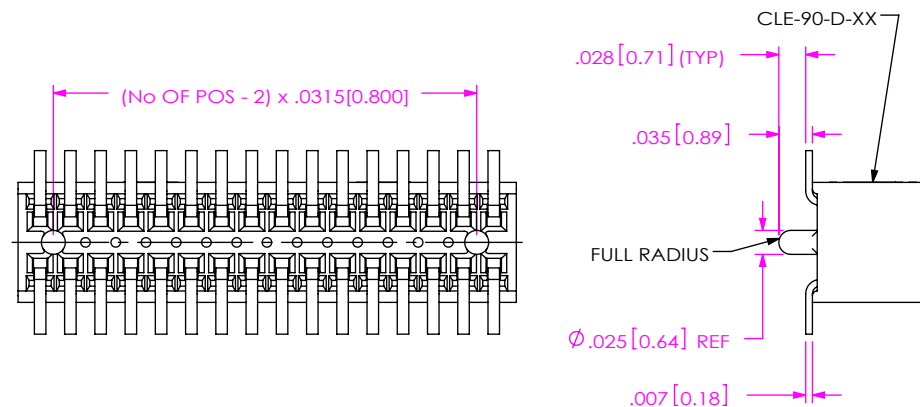
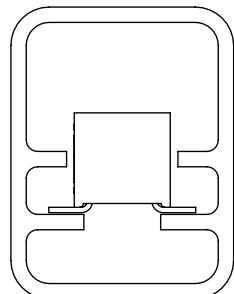
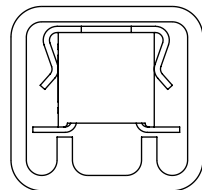


FIG 4  
-A OPTION (MOLDED)  
4 POSITIONS MIN

PACKAGING VIEW



PT-1-24-03-43  
TP-24



PT-1-24-01-62  
TP-12

FOR CLE-104/105-01-X-DV &  
CLE-104/105-01-X-DV-A

ALL OTHER POSITIONS AND OPTIONS

**PROPRIETARY NOTE**  
THIS DOCUMENT CONTAINS CONFIDENTIAL AND PROPRIETARY INFORMATION AND ALL DESIGN, MANUFACTURING, REPRODUCTION, USE, PATENT RIGHTS AND SALES RIGHTS ARE EXPRESSLY RESERVED BY SAMTEC, INC. THIS DOCUMENT SHALL NOT BE DISCLOSED, IN WHOLE OR PART, TO ANY UNAUTHORIZED PERSON OR ENTITY NOR REPRODUCED, TRANSFERRED OR INCORPORATED IN ANY OTHER PROJECT IN ANY MANNER WITHOUT THE EXPRESS WRITTEN CONSENT OF SAMTEC, INC.

DO NOT SCALE DRAWING  
SHEET SCALE: 5:1



520 PARK EAST BLVD, NEW ALBANY, IN 47150  
PHONE: 812-944-6733 FAX: 812-948-5047  
e-Mail info@SAMTEC.com code 55322

DESCRIPTION:  
.8MM x 1.2MM C.L. SOCKET STRIP ASSEMBLY  
DWG. NO.

CLE-1XX-XX-X-DV-XX

BY: PURVIS 10/23/95 SHEET 2 OF 2