

NEW

6 mm Compact Top Mount Endurance SMT Tact Switch

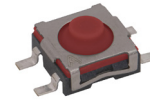
TLSM Series

Features/Benefits

- 6.0 x 6.1 mm dimension
- Height 3.45 mm
- Soft actuator
- Long life - 3M cycles
- IP54

Typical Applications

- Elevator button & alarm
- Robotic vaccum
- Door handle
- Mower

**Tactile Switches**

Specification

FUNCTION: Momentary action
 CONTACT ARRANGEMENT: SPDT, NC
 TERMINALS: SMT termination
 TRAVEL: 0.3 ± 0.2 mm

Mechanical

OPERATING LIFE: 2,000,000 cycles

Electrical

VOLTAGE: DC 1V to 16V
 CURRENT: 10µA to 50mA
 CONTACT RESISTANCE: 200mΩ max.
 500mΩ max. after testing
 INSULATION RESISTANCE: 100 MΩ min.
 DIELECTRIC VOLTAGE: AC 250V

Environmental

OPERATING TEMPERATURE: -40°C to 90°C
 STORAGE TEMPERATURE: -40°C to 90°C

Process

SOLDERING: This component is suited to the following methods: Infrared Reflow Soldering in accordance with IEC61760-1

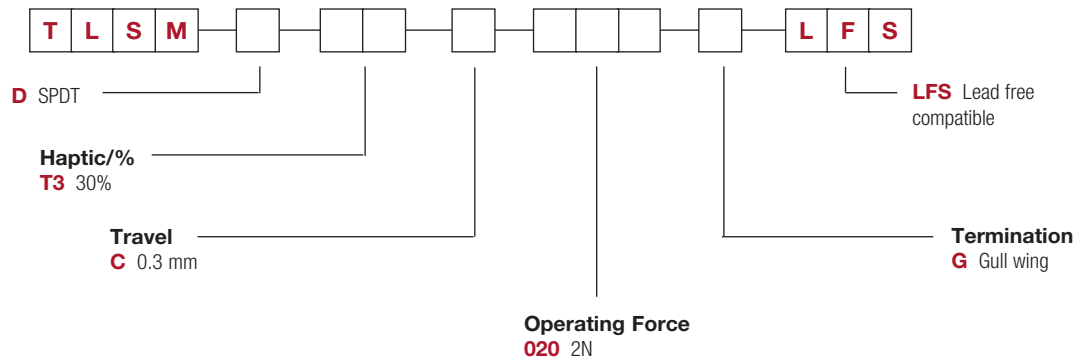
Packaging

1100 pieces per reel

How To Order

Our easy build-a-switch concept allows you to mix and match options to create the switch you need. To order, select desired option from each category and place it in the appropriate box.

For any part number different from those listed above, please consult your local representative.



5 Aug 22

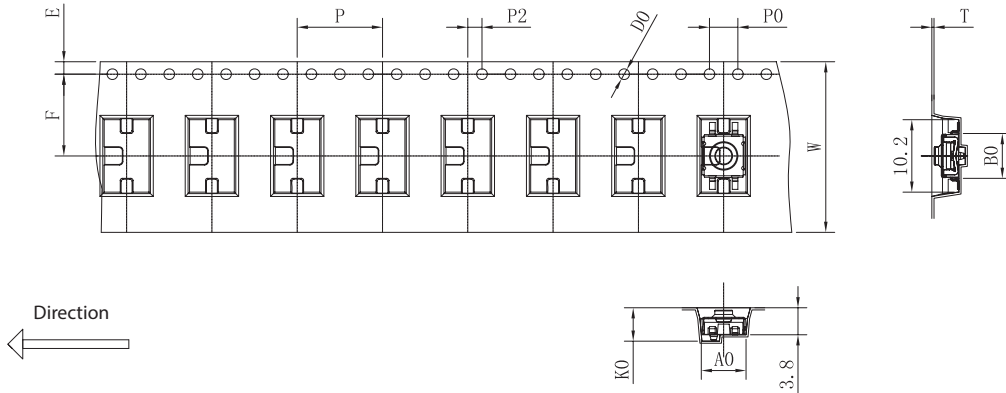
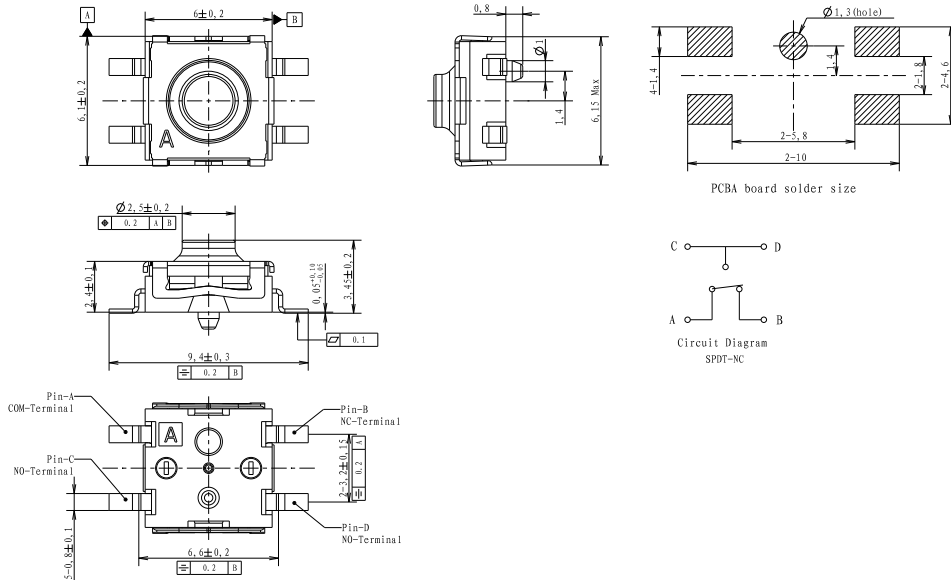


First Angle Projection

Dimensions are shown: mm
 Specifications and dimensions subject to change

TLSM Series 6 mm Compact Top Mount Endurance SMT Tact Switch

NEW



B

Tactile Switches



First Angle Projection

Dimensions are shown: mm
Specifications and dimensions subject to change

