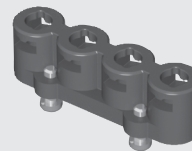




CCH-J-01



CCH-J-04



CCH-J-02

CCH SERIES

HIGH-PERFORMANCE TEST POINTS

SPECIFICATIONS

For complete specifications and recommended PCB layouts see www.samtec.com?CCH

Insulator Material:

Black LCP

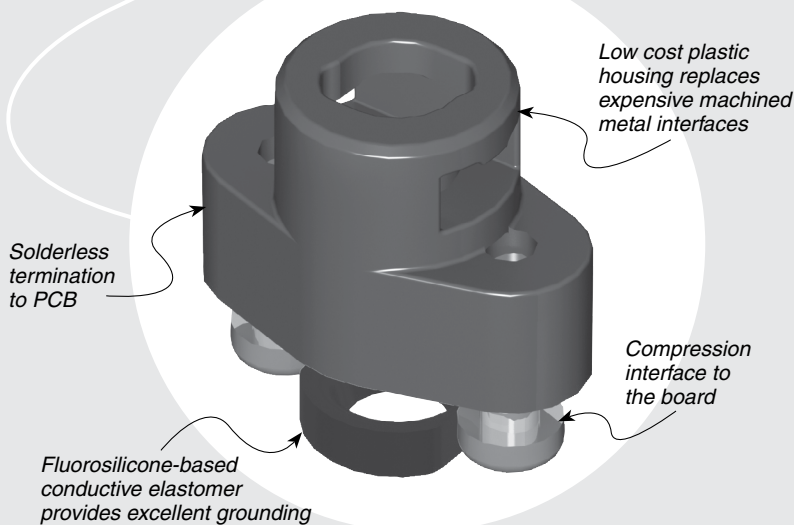
Gasket Material:

MIL-DTL-83528C, Type D

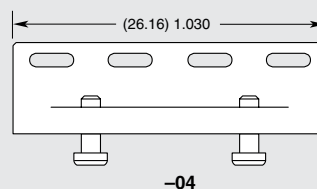
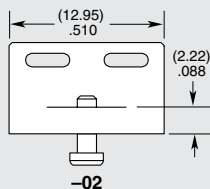
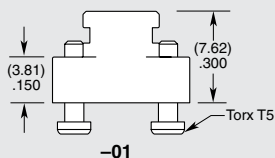
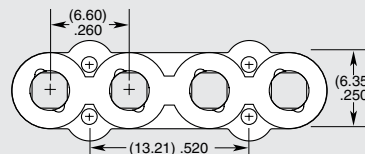
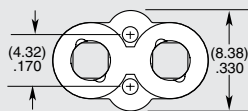
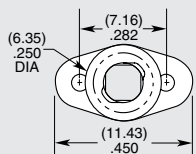
Mates with:
RF25S

OTHER SOLUTIONS

- Replacement elastomer gaskets available



TYPE	J	NUMBER OF POSITIONS
CCH		
= Single position test point		
		-01 = 1 Position
		-02 = 2 Positions
		-04 = 4 Positions



Note:
Some lengths, styles and options are non-standard, non-returnable.