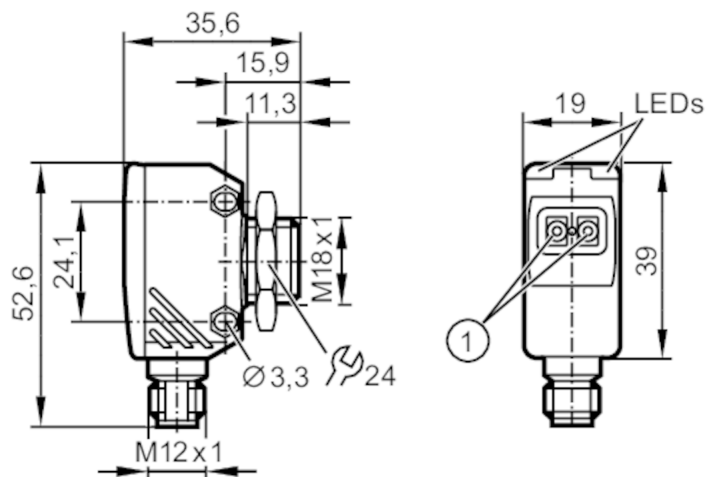




Diffuse reflection sensor with background suppression

OGH-FPKG/US/CUBE



- 1 programming buttons
transmitter in lower lens
receiver in upper lens



Product characteristics

Type of light	red light
Housing	rectangular with M18 thread

Application

Special feature	Background suppression
Function principle	Diffuse reflection sensor

Electrical data

Operating voltage	[V]	10...30 DC; ("supply class 2" to cULus)
Rated insulation voltage	[V]	32
Current consumption	[mA]	25
Protection class		III
Reverse polarity protection		yes
Max. power-on delay time	[ms]	300
Type of light		red light
Wave length	[nm]	645

Outputs

Electrical design		PNP
Output function		light-on/dark-on mode; (programmable)
Max. voltage drop switching output DC	[V]	2.5
Permanent current rating of switching output DC	[mA]	200
Switching frequency DC	[Hz]	1000
Short-circuit protection		yes
Type of short-circuit protection		pulsed



Diffuse reflection sensor with background suppression

OGH-FPKG/US/CUBE

Detection zone		
Range	[mm]	15...200; (white paper 200 x 200 mm 90% remission)
Range on white object (90 % remission)	[mm]	15...200
Range on grey object (18 % remission)	[mm]	15...200
Range on black object (6 % remission)	[mm]	15...200
Range adjustable		yes
Max. light spot diameter	[mm]	13
Light spot dimensions refer to		at maximum range
Background suppression available		yes
Interfaces		
Communication interface		IO-Link
Transmission type		COM2 (38,4 kBaud)
IO-Link revision		1.1
SDCI standard		IEC 61131-9
Profiles		Measuring Sensor, Identification and Diagnosis, Switching Signal Channel, Teach Channel
SIO mode		yes
Required master port type		A
Min. process cycle time	[ms]	10
IO-Link process data (cyclical)	function	bit length
	process value	16
	device status	4
	binary switching information	1
IO-Link functions (acyclical)		application specific tag; operating hours counter; switching cycles counter
Supported DeviceIDs	Type of operation	DeviceID
	Default	1132
Note		For further information please see the IODD PDF file under "Downloads"
Operating conditions		
Ambient temperature	[°C]	-25...60
Storage temperature	[°C]	-40...60
Protection		IP 65; IP 67
Tests / approvals		
EMC		EN 60947-5-2
MTTF	[years]	782
UL approval	Ta	-25...60 °C
	Enclosure type	Type 1
	power supply	Class 2
	File number UL	E174191
Mechanical data		
Weight	[g]	60.5
Housing		rectangular with M18 thread
Dimensions	[mm]	52.6 x 19 x 35.6
Thread designation		M18 x 1



Diffuse reflection sensor with background suppression

OGH-FPKG/US/CUBE

Materials	diecast zinc; PEI
Lens material	PEI
Lens alignment	side lens

Displays / operating elements

Display	switching status	1 x LED, yellow
	operation	1 x LED, green
Operating elements	switch point	pushbutton
	Output function	pushbutton

Accessories

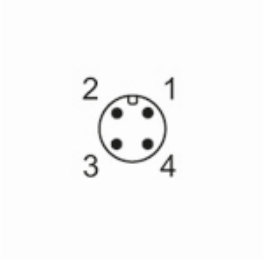
Items supplied	lock nut: 1
----------------	-------------

Remarks

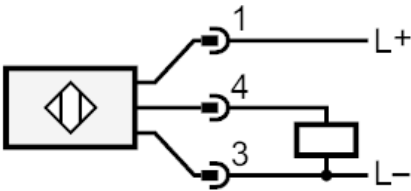
Pack quantity	1 pcs.
---------------	--------

Electrical connection

Connector: 1 x M12; coding: A



Connection





Diffuse reflection sensor with background suppression

OGH-FPKG/US/CUBE

Other data

Repeatability / precision: 6 σ

	repeatability of the measured values	
Abstand	white (90 % remission)	black (6 %...90 % remission)
20 mm	0.5 mm	1.0 mm
50 mm	0.8 mm	2.0 mm
100 mm	1.5 mm	4.5 mm
150 mm	3.0 mm	9.0 mm
200 mm	6.0 mm	20.0 mm
	accuracy	
Abstand	white (90 % remission)	black (6 %...90 % remission)
20 mm	± 2.0 mm	± 2.5 mm
50 mm	± 3.5 mm	± 4.5 mm
100 mm	± 6.0 mm	± 7.5 mm
150 mm	± 7.5 mm	± 11.0 mm
200 mm	± 10.0 mm	± 17.0 mm

The values apply at

Extraneous light on the object	< 10 klx
constant ambient conditions	23 °C / 960 hPa
minimum power-on time in minutes	10

Diagrams and graphs

The diagram illustrates the measurement setup for the OGH580 sensor. It shows a sensor (a) emitting a beam towards an object (b). The distance between the sensor and the object is labeled 'x'. The object (b) is a square. The background (c) is a vertical line with diagonal hatching. The distance between the object and the background is labeled 'y'. A dashed line indicates the minimum distance between the object and the background.

a: sensor

b: object

c: background

x: distance sensor/object [mm]

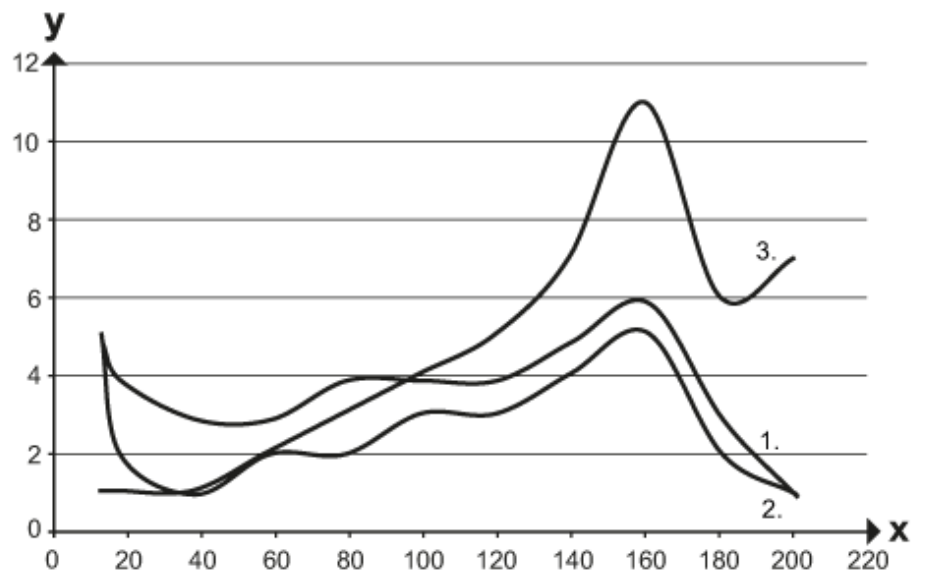
y: min. distance object/background [mm]



Diffuse reflection sensor with background suppression

OGH-FPKG/US/CUBE

accuracy graph



x: distance sensor/object [mm]

y: min. distance object/background [mm]

1 = object black (6 % remission) , background white (90 % remission)

2 = object grey (18 % remission) , background white (90 % remission)

3 = object white (90 % remission) , background white (90 % remission)