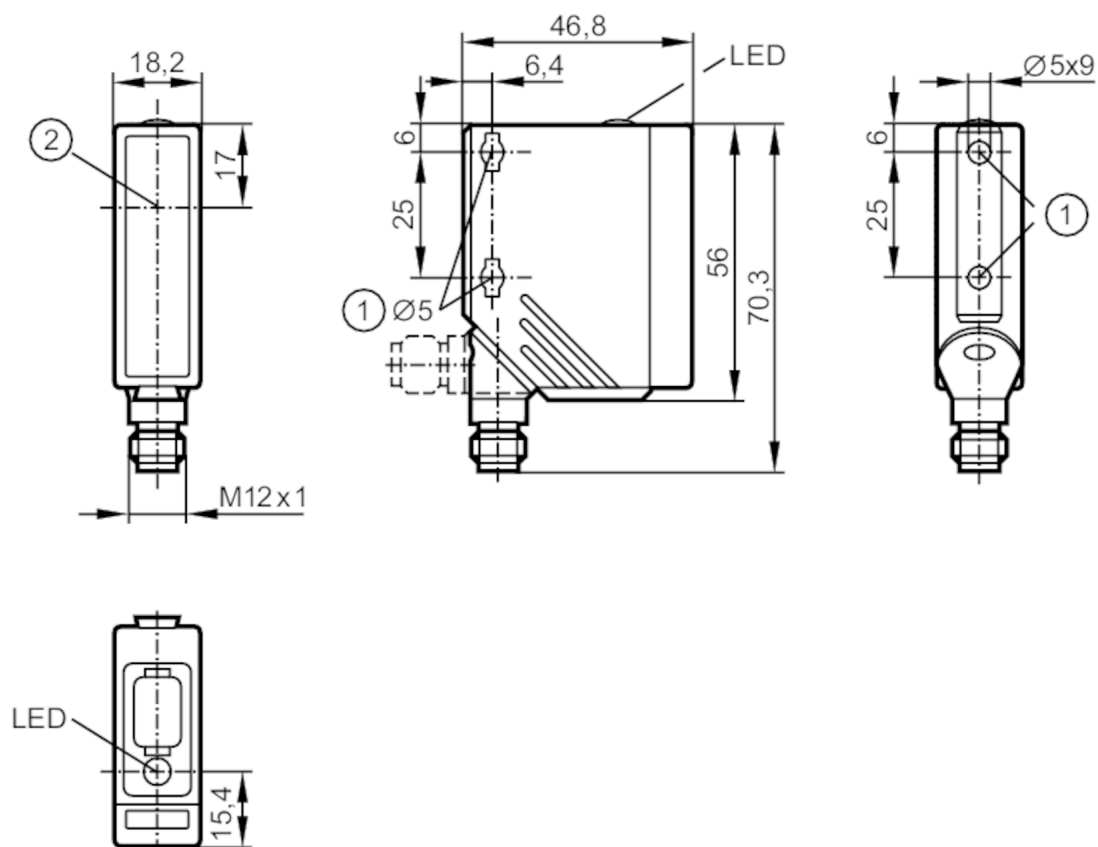


# O5S500



## Through-beam sensor transmitter

O5S-00KG/US100



- 1 When a M5 mounting screw is used, the max. tightening torque is 2 Nm.  
2 light emission



### Product characteristics

Type of light	red light
Housing	rectangular

### Application

Function principle	Through-beam sensor
--------------------	---------------------

### Electrical data

Operating voltage	[V]	10...36 DC
Current consumption	[mA]	20
Protection class		II
Reverse polarity protection		yes
Type of light		red light
Wave length	[nm]	624

### Detection zone

Transmitter / receiver		transmitter
Range	[m]	< 25
Range adjustable		no
Max. light spot diameter	[mm]	625
Light spot dimensions refer to		at maximum range

# O5S500



## Through-beam sensor transmitter

O5S-00KG/US100

### Operating conditions

Ambient temperature	[°C]	-25...60
Protection		IP 67

### Tests / approvals

EMC		EN 60947-5-2
MTTF	[years]	617

### Mechanical data

Weight	[g]	65.5
Housing		rectangular
Dimensions	[mm]	56 x 18.2 x 46.8
Materials		housing: PA; bezel: stainless steel; operator interface: TPU
Lens material		PMMA
Lens alignment		side lens

### Displays / operating elements

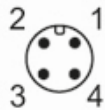
Display	operation	1 x LED, green
---------	-----------	----------------

### Remarks

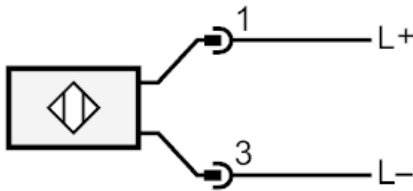
Remarks		operating voltage "supply class 2" according to cULus
Pack quantity		1 pcs.

### Electrical connection

Connector: 1 x M12; coding: A



### Connection





## Through-beam sensor transmitter

O5S-OOKG/US100

### Diagrams and graphs

excess gain graph

