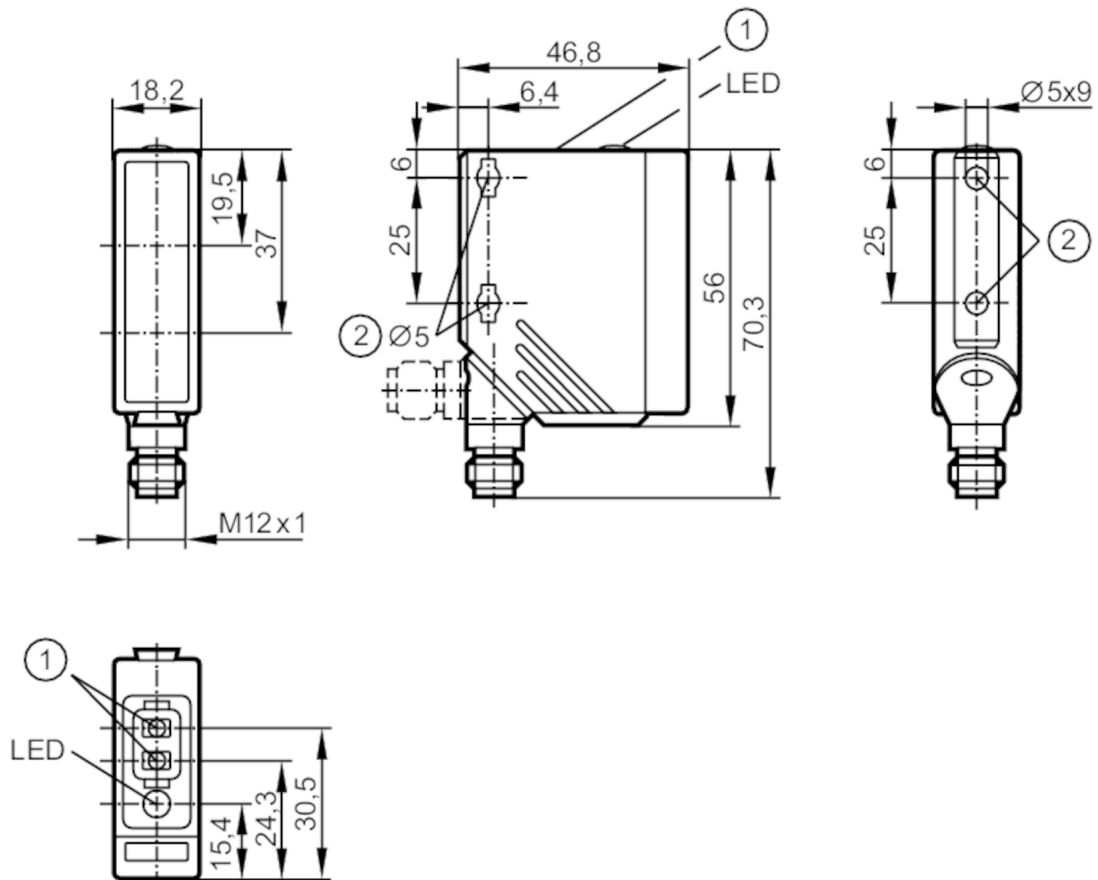


O5P500



Retro-reflective sensor

O5P-FPKG/US100



- 1 Programming buttons
2 When a M5 mounting screw is used, the max. tightening torque is 2 Nm.



Product characteristics

| | |
|---------------|-------------|
| Type of light | red light |
| Housing | rectangular |

Application

| | |
|--------------------|-------------------------|
| System | polarization filter |
| Function principle | Retro-reflective sensor |

Electrical data

| | | |
|-----------------------------|------|---|
| Operating voltage | [V] | 10...36 DC; (cULus - Class 2 source required) |
| Current consumption | [mA] | 20 |
| Protection class | | II |
| Reverse polarity protection | | yes |
| Type of light | | red light |
| Wave length | [nm] | 624 |

Outputs

| | |
|---|---------------------------------------|
| Electrical design | PNP |
| Output function | light-on/dark-on mode; (programmable) |
| Max. voltage drop switching output DC [V] | 2.5 |

O5P500



Retro-reflective sensor

O5P-FPKG/US100

| | | |
|---|------|--------------------|
| Permanent current rating of switching output DC | [mA] | 200 |
| Switching frequency DC | [Hz] | 2000 |
| Short-circuit protection | | yes |
| Type of short-circuit protection | | yes (non-latching) |
| Overload protection | | yes |

Monitoring range

| | | |
|---------------------------------------|------|---|
| Range referred to prismatic reflector | [m] | 0.075...10; (Prismatic reflector Ø 80 E20005) |
| Range adjustable | | yes |
| Max. light spot diameter | [mm] | 250 |
| Light spot dimensions refer to | | at maximum range |
| Polarization filter available | | yes |

Operating conditions

| | | |
|---------------------|------|----------|
| Ambient temperature | [°C] | -25...60 |
| Protection | | IP 67 |

Tests / approvals

| | | |
|------|---------|--------------|
| EMC | | EN 60947-5-2 |
| MTTF | [years] | 435 |

Mechanical data

| | | |
|----------------|------|---|
| Weight | [g] | 67.5 |
| Housing | | rectangular |
| Dimensions | [mm] | 56 x 18.2 x 46.8 |
| Material | | housing: PA; Front framework: stainless steel; operator interface: TPU (urethane) |
| Lens material | | PMMA |
| Lens alignment | | Side sensing |

Displays / operating elements

| | | |
|-----------------|------------------|-----------------|
| Display | Switching status | 1 x LED, yellow |
| Teach function | | yes |
| Electronic lock | | yes |

Remarks

| | | |
|---------------|--|--------|
| Pack quantity | | 1 pcs. |
|---------------|--|--------|

Electrical connection

Connector: 1 x M12; coding: A



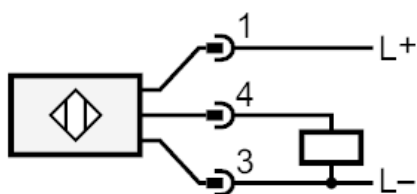
O5P500



Retro-reflective sensor

O5P-FPKG/US100

Connection



Diagrams and graphs

excess gain graph

