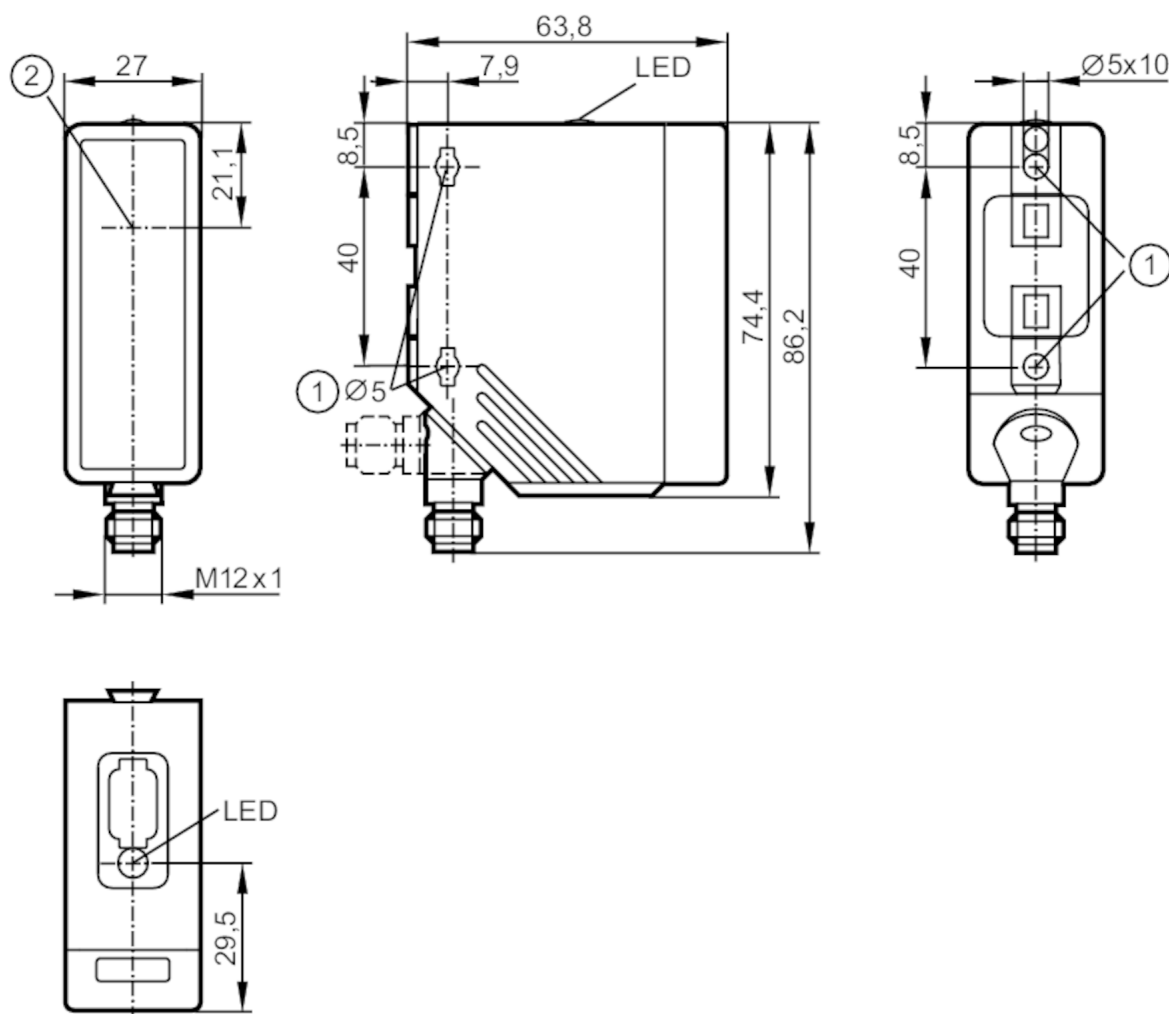


# O4S500



## Through-beam sensor transmitter

O4S-00KG/US100



- 1 When a M5 mounting screw is used, the max. tightening torque is 2 Nm.  
2 light emission



### Product characteristics

Type of light	red light
Housing	rectangular

### Application

Function principle	Through-beam sensor
--------------------	---------------------

### Electrical data

Operating voltage	[V]	10...36 DC; ("supply class 2" to cULus)
Current consumption	[mA]	20
Protection class		II
Reverse polarity protection		yes
Type of light		red light
Wave length	[nm]	624

### Outputs

Overload protection	yes
---------------------	-----

# O4S500



## Through-beam sensor transmitter

O4S-00KG/US100

Detection zone	
Transmitter / receiver	transmitter
Range [m]	0...80
Range adjustable	no
Max. light spot diameter [mm]	2400
Light spot dimensions refer to	at maximum range

Operating conditions	
Ambient temperature [°C]	-25...60
Protection	IP 67

Tests / approvals	
EMC	EN 60947-5-2
MTTF [years]	616

Mechanical data	
Weight [g]	122
Housing	rectangular
Dimensions [mm]	74.4 x 27 x 63.8
Materials	housing: PA; bezel: stainless steel; operator interface: TPE
Lens material	PMMA
Lens alignment	side lens

Displays / operating elements	
Display	operation 1 x LED, green

Remarks	
Pack quantity	1 pcs.

### Electrical connection

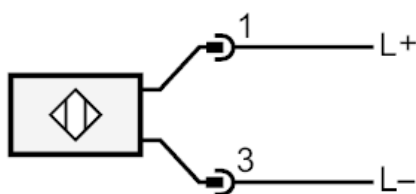
Connector: 1 x M12; coding: A



## Through-beam sensor transmitter

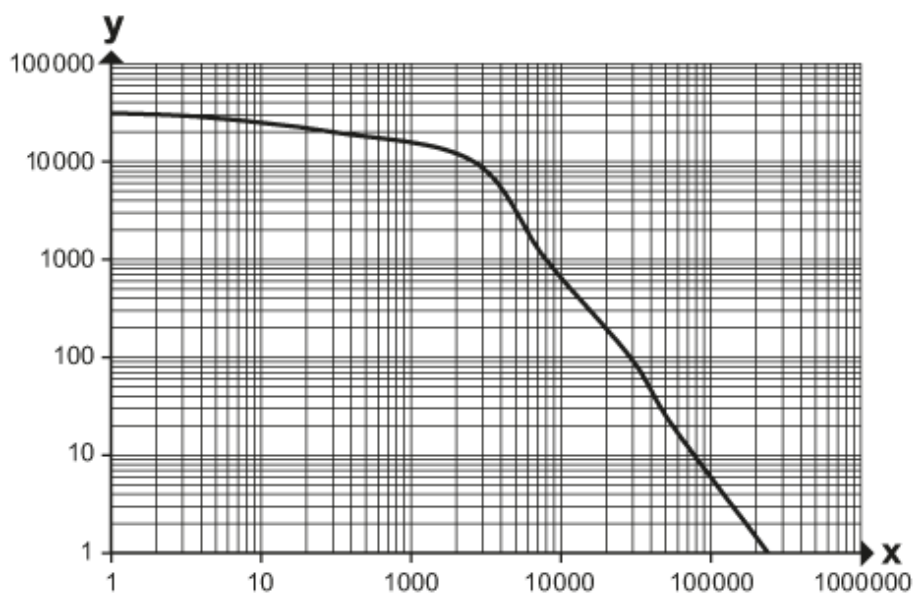
O4S-00KG/US100

### Connection



### Diagrams and graphs

excess gain graph



x: Abstand [mm]

y: Funktionsreservefaktor