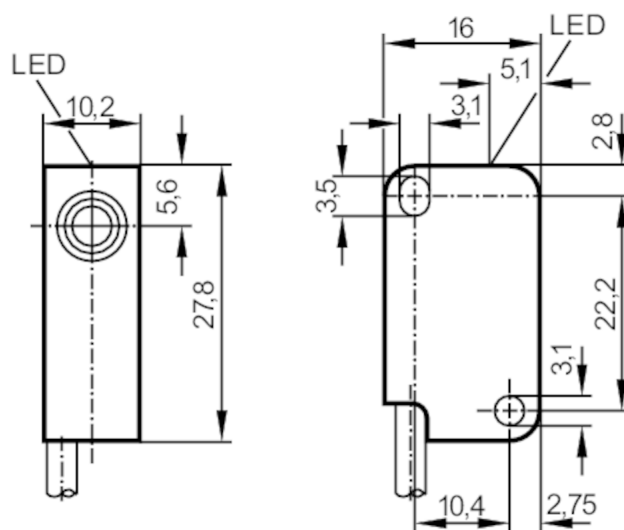




Inductive sensor

IS-3002-BPKG



Product characteristics

Electrical design	PNP
Output function	normally open
Sensing range [mm]	2
Housing	rectangular
Dimensions [mm]	28 x 10 x 16

Electrical data

Operating voltage [V]	10...30 DC
Current consumption [mA]	< 15
Protection class	III
Reverse polarity protection	yes

Outputs

Electrical design	PNP
Output function	normally open
Max. voltage drop switching output DC [V]	2.5
Max. leakage current [mA]	0.5
Permanent current rating of switching output DC [mA]	200
Short-time current rating of switching output [mA]	200
Switching frequency DC [Hz]	800
Short-circuit protection	yes
Overload protection	yes

Detection zone

Sensing range [mm]	2
Real sensing range Sr [mm]	$2 \pm 10 \%$

IS5001



Inductive sensor

IS-3002-BPKG

Operating distance	[mm]	0...1.62
Accuracy / deviations		
Correction factor		steel: 1 / stainless steel: 0.7 / brass: 0.4 / aluminium: 0.3 / copper: 0.2
Hysteresis	[% of Sr]	1...15
Switch point drift	[% of Sr]	-10...10
Operating conditions		
Ambient temperature	[°C]	-25...80
Protection		IP 67
Tests / approvals		
EMC	EN 61000-4-2 ESD	-- CD / 8 kV AD
	EN 61000-4-3 HF radiated	10 V/m
	EN 61000-4-4 Burst	2 kV
	EN 61000-4-5 Surge	0,5 kV
	EN 61000-4-6 HF conducted	10 V
	EN 55011	class B
Vibration resistance	EN 60947-5-2	
Shock resistance	EN 60947-5-2	
MTTF	[years]	3044
UL approval	Ta	-25...80 °C
	Enclosure type	Type 1
	power supply	Class 2
	File number UL	E174191
Mechanical data		
Weight	[g]	44.6
Housing		rectangular
Mounting		flush mountable
Dimensions	[mm]	28 x 10 x 16
Materials		housing: PBT
Tightening torque	[Nm]	< 0.5; (with washer)
Displays / operating elements		
Display	switching status	1 x LED, yellow
Remarks		
Pack quantity		1 pcs.

IS5001



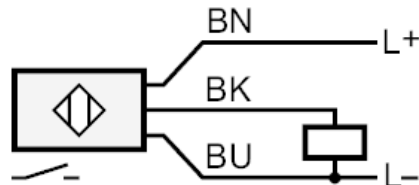
Inductive sensor

IS-3002-BPKG

Electrical connection

Cable: 2 m, PVC, Ø 3.5 mm; 3 x 0.14 mm²

Connection



BN =	Core colours :
BU =	brown
BK =	blue
	black