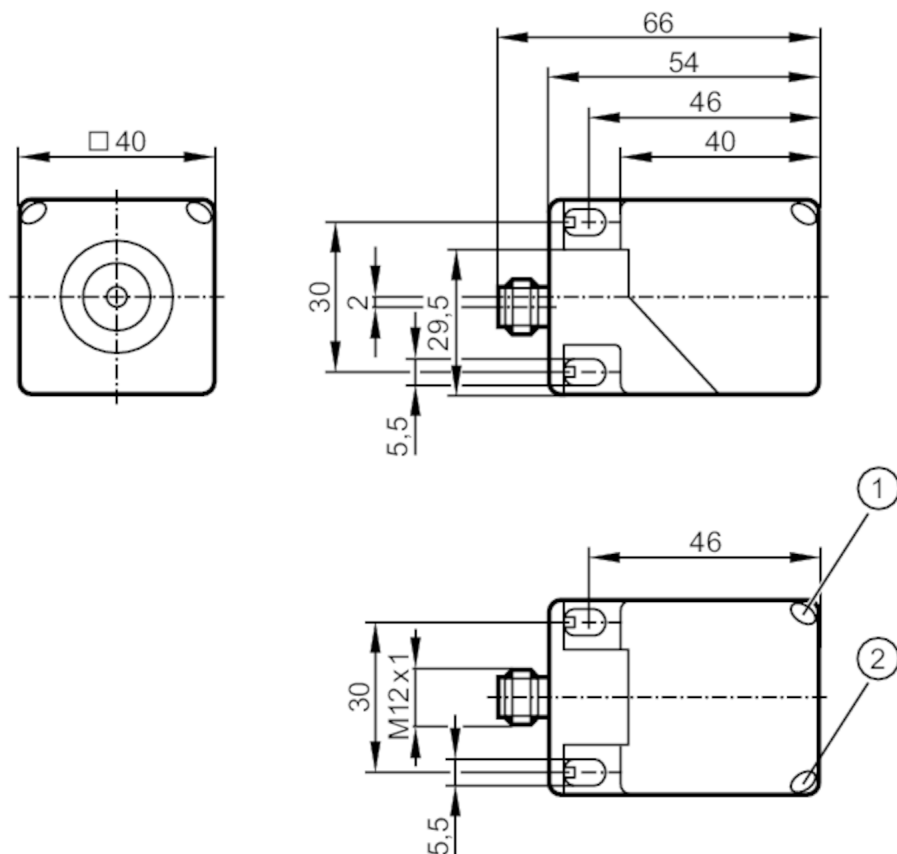


Inductive analogue sensor with IO-Link

IMC4026A2PKG/IO/US



- 1 LED yellow
2 LED green



Product characteristics

Housing	rectangular
Dimensions [mm]	40 x 40 x 54

Electrical data

Operating voltage [V]	15...30 DC
Current consumption [mA]	< 20
Protection class	II
Reverse polarity protection	yes

Outputs

Analogue voltage output [V]	0...10; (linear; gradient: 0,4 V/mm; for frontal approach and for target made of mild steel: 90 x 90 x 1 mm)
Min. load resistance [Ω]	2000
Short-circuit protection	yes
Overload protection	yes

Detection zone

Measuring range [mm]	1...26
----------------------	--------

Accuracy / deviations

Correction factor	steel: 1 / stainless steel: 0.7 / brass: 0.5 / aluminium: 0.4 / copper: 0.3
-------------------	---

IM5142



Inductive analogue sensor with IO-Link

IMC4026A2PKG/IO/US

Linearity error of analogue output	[%]	$\pm 3 \%$; (of UA max)
Repeatability analogue output	[%]	$\pm 2 \%$; (of UA max)

Response times

Response time	[ms]	< 20
---------------	------	------

Operating conditions

Ambient temperature	[°C]	-25...80
Protection		IP 67

Tests / approvals

MTTF	[years]	231
UL approval	Ta	-25...70 °C
	Enclosure type	Type 1
	power supply	Class 2
	File number UL	E174191

Mechanical data

Weight	[g]	157
Housing		rectangular
Sensing face		5 positions selectable
Mounting		non-flush mountable
Dimensions	[mm]	40 x 40 x 54
Materials		PA; brass white bronze coated

Displays / operating elements

Display	within the operating range	1 x LED, yellow lights
	outside the operating range	1 x LED, yellow flashing
	operation	LED, green

Remarks

Pack quantity	1 pcs.
---------------	--------

Electrical connection - plug

Connector: 1 x M12; coding: A





Inductive analogue sensor with IO-Link

IMC4026A2PKG/IO/US

Connection

