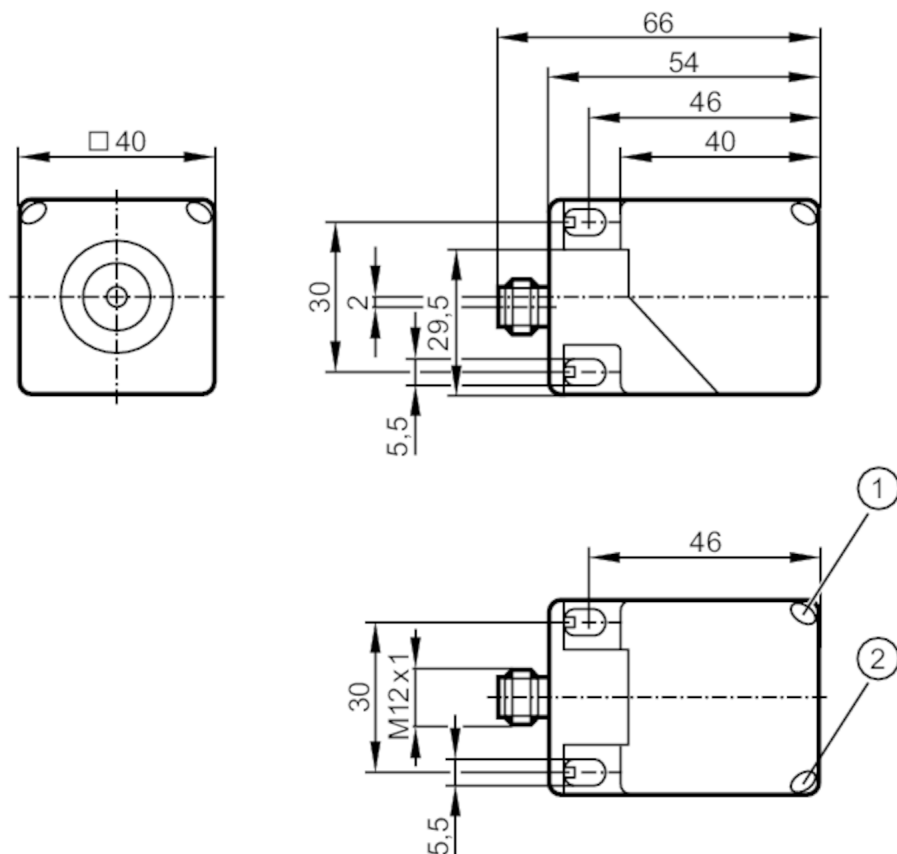


## Inductive analogue sensor with IO-Link

IMC4015A1PKG/IO/US



- 1 LED yellow  
2 LED green



## Product characteristics

Housing	rectangular
Dimensions [mm]	40 x 40 x 54

## Electrical data

Operating voltage [V]	15...30 DC
Current consumption [mA]	< 20
Protection class	II
Reverse polarity protection	yes

## Outputs

Analogue current output [mA]	4...20; (linear; gradient: 1,143 mA/mm; for frontal approach and for target made of mild steel: 45 x 45 x 1 mm)
Max. load [Ω]	500
Short-circuit protection	yes
Overload protection	yes

## Detection zone

Measuring range [mm]	1...15
----------------------	--------

## Accuracy / deviations

Correction factor	steel: 1 / stainless steel: 0.7 / brass: 0.5 / aluminium: 0.4 / copper: 0.3
-------------------	---



## Inductive analogue sensor with IO-Link

IMC4015A1PKG/IO/US

Linearity error of analogue output [%]	± 3 %; (of IA max)
Repeatability analogue output [%]	± 2 %; (of IA max)

## Response times

Response time [ms]	< 20
--------------------	------

## Operating conditions

Ambient temperature [°C]	-25...80
Protection	IP 67

## Tests / approvals

MTTF	[years]	231	
UL approval	Ta	-25...70 °C	
	Enclosure type	Type 1	
	power supply	Class 2	
	File number UL	E174191	

## Mechanical data

Weight [g]	190
Housing	rectangular
Sensing face	5 positions selectable
Mounting	flush mountable
Dimensions [mm]	40 x 40 x 54
Materials	PA; brass white bronze coated

## Displays / operating elements

Display	within the operating range	1 x LED, yellow lights
	outside the operating range	1 x LED, yellow flashing
	operation	LED, green

## Remarks

Pack quantity	1 pcs.
---------------	--------

## Electrical connection - plug

Connector: 1 x M12; coding: A



# IM5139



## Inductive analogue sensor with IO-Link

IMC4015A1PKG/IO/US

### Connection

