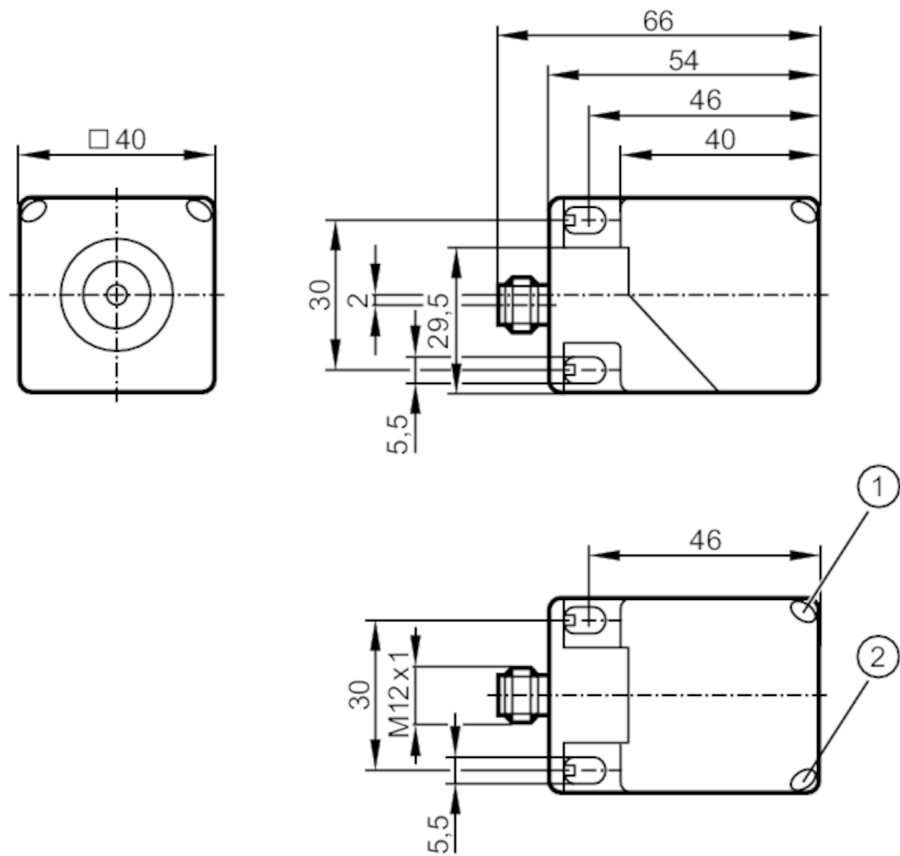


# IM5115



## Inductive sensor

IMC3020BBPKG/US-100-DPS



- 1 LED yellow
- 2 LED green



### Product characteristics

Electrical design	PNP
Output function	normally open
Sensing range [mm]	20
Housing	rectangular
Dimensions [mm]	40 x 40 x 54

### Application

Special feature	Gold-plated contacts
-----------------	----------------------

### Electrical data

Operating voltage [V]	10...36 DC
Current consumption [mA]	< 20
Protection class	II
Reverse polarity protection	yes

### Outputs

Electrical design	PNP
Output function	normally open
Max. voltage drop switching output DC [V]	2.5

# IM5115



## Inductive sensor

IMC3020BBPKG/US-100-DPS

Permanent current rating of switching output DC	[mA]	200
Switching frequency DC	[Hz]	100
Short-circuit protection		yes
Type of short-circuit protection		pulsed
Overload protection		yes

Detection zone		
Sensing range	[mm]	20
Operating distance	[mm]	0...16.2

Accuracy / deviations		
Correction factor		steel: 1 / stainless steel: 0.7 / brass: 0.4 / aluminium: 0.4 / copper: 0.3
Hysteresis	[% of Sr]	1...20

Operating conditions		
Ambient temperature	[°C]	-25...70
Protection		IP 67

Tests / approvals		
EMC	EN 61000-4-2 ESD	8 kV CD / 4 kV AD
	EN 61000-4-3 HF radiated	10 V/m
	EN 61000-4-4 Burst	2 kV
	EN 61000-4-6 HF conducted	10 V
	EN 55011	class B
MTTF	[years]	1590
UL approval	Ta	-25...70 °C
	Enclosure type	Type 1
	power supply	Class 2
	File number UL	E174191

Mechanical data		
Weight	[g]	146.5
Housing		rectangular
Sensing face		5 positions selectable
Mounting		flush mountable
Dimensions	[mm]	40 x 40 x 54
Materials		PA

Displays / operating elements		
Display	switching status	1 x LED, yellow
	operation	1 x LED, green

Remarks		
Pack quantity		1 pcs.

# IM5115



## Inductive sensor

IMC3020BBPKG/US-100-DPS

### Electrical connection - plug

Connector: 1 x M12; coding: A; Locking: locking, rotatable; Contacts: gold-plated



### Connection

