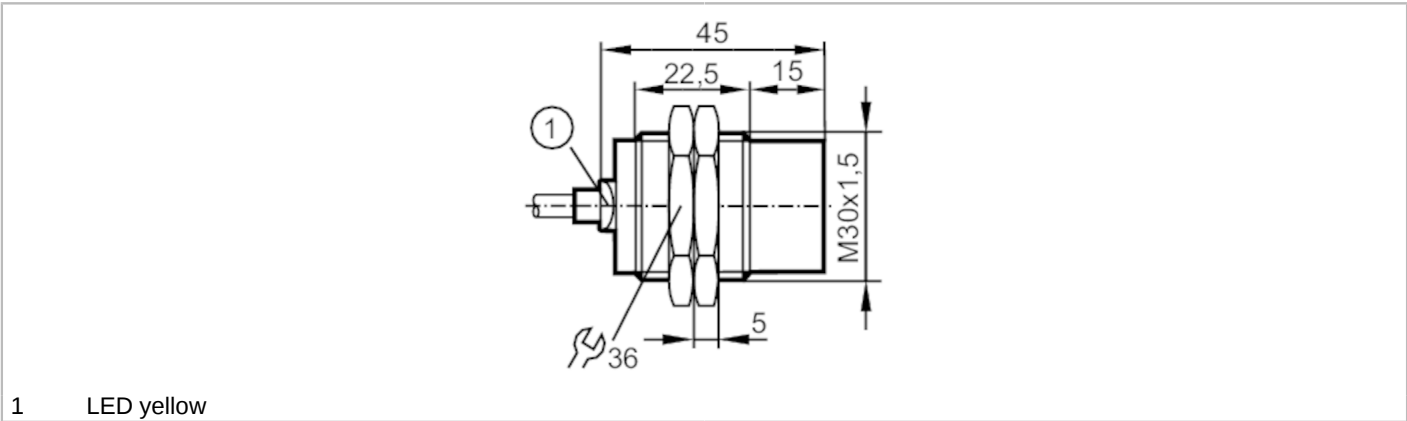




Inductive sensor

IIB3022-BPKG/2M/PUR



1 LED yellow



Product characteristics		
Electrical design		PNP
Output function		normally open
Sensing range	[mm]	22
Housing		threaded type
Dimensions	[mm]	M30 x 1.5 / L = 45
Application		
Special feature		Increased sensing range
Application		Suitable for industrial, mobile, cooling and lubricating applications; Industrial applications / factory automation
Electrical data		
Operating voltage	[V]	10...30 DC
Current consumption	[mA]	< 10
Protection class		III
Reverse polarity protection		yes
Outputs		
Electrical design		PNP
Output function		normally open
Max. voltage drop switching output DC	[V]	2.5
Permanent current rating of switching output DC	[mA]	100
Switching frequency DC	[Hz]	100
Short-circuit protection		yes
Overload protection		yes
Detection zone		
Sensing range	[mm]	22
Real sensing range Sr	[mm]	22 ± 10 %
Operating distance	[mm]	0...17.82
Increased sensing range		yes



Inductive sensor

IIB3022-BPKG/2M/PUR

Accuracy / deviations			
Correction factor		steel: 1 / stainless steel: 0.7 / brass: 0.5 / aluminium: 0.4 / copper: 0.3	
Hysteresis	[% of Sr]	3...15	
Switch point drift	[% of Sr]	-10...10	
Operating conditions			
Ambient temperature		[°C]	-40...85
Protection		IP 65; IP 66; IP 67; IP 68; IP 69K	
Tests / approvals			
EMC	EN 61000-4-2 ESD		4 kV CD / 8 kV AD
	EN 61000-4-3 HF radiated		10 V/m
	EN 61000-4-4 Burst		2 kV
	EN 61000-4-6 HF conducted		10 V
	EN 55011		class B
Vibration resistance	EN 60068-2-6 Fc		20 g (10...3000 Hz) / 50 sweep cycles, 1 octave per minute, in 3 axes
Shock resistance	EN 60068-2-27 Ea		100 g 11 ms half-sine; 3 shocks each in every direction of the 3 coordinate axes
Continuous shock resistance	EN 60068-2-27		40 g 6 ms; 4000 shocks each in every direction of the 3 coordinate axes
Fast temperature change	EN 60068-2-14 Na		TA = -40 °C; TB = 85 °C; t1 = 30 min; t2 = < 10 s; 50 cycles
Salt spray test	EN 60068-2-52 Kb		severity level 5 (4 test cycles)
MTTF	[years]	861	
Embedded software included		yes	
UL approval	Ta		-25...75 °C
	Enclosure type		Type 1
	power supply		Limited Voltage/Current
	UL Approval no.		A002
	File number UL		E174191
Mechanical data			
Weight	[g]	134.7	
Housing	threaded type		
Mounting	non-flush mountable		
Dimensions	[mm]	M30 x 1.5 / L = 45	
Thread designation	M30 x 1.5		
Materials	brass white bronze coated; sensing face: PBT orange; LED window: PEI; lock nuts: brass white bronze coated		
Displays / operating elements			
Display		switching status	1 x LED, yellow
Accessories			
Items supplied		lock nuts: 2	
Remarks			
Pack quantity		1 pcs.	

IIS243



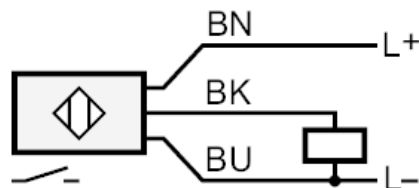
Inductive sensor

IIB3022-BPKG/2M/PUR

Electrical connection

Cable: 2 m, PUR, Ø 4 mm; burning behaviour to ECE R118 rev. 2; 3 x 0.34 mm²

Connection



BK =	Core colours :
BN =	black
BU =	brown
	blue