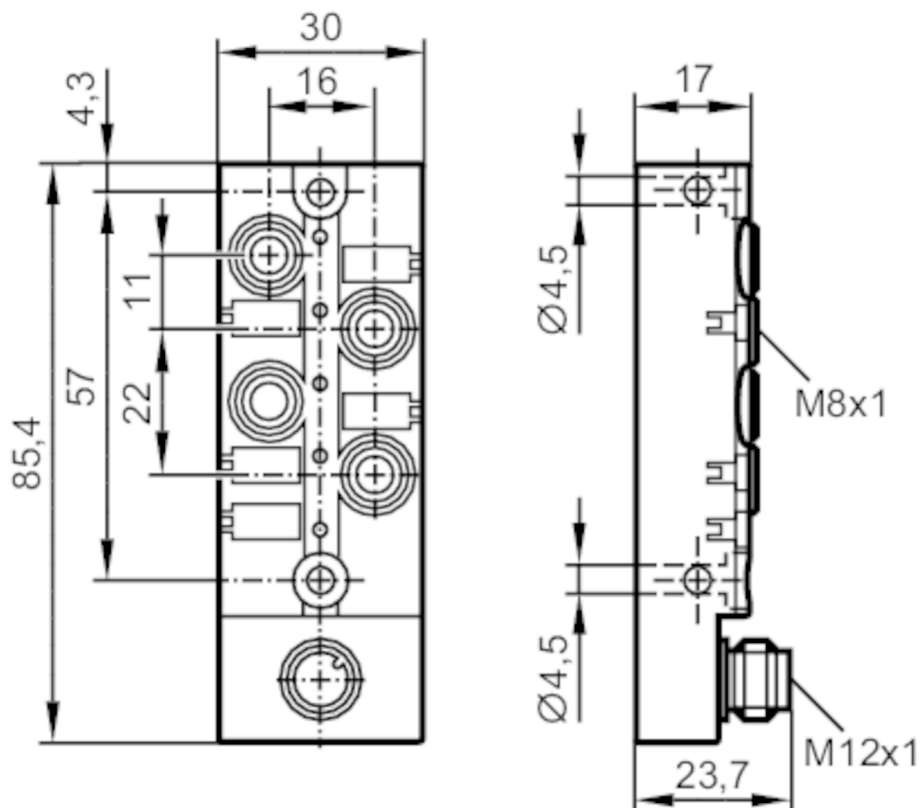




Splitter box

ZDO4F035MSS0000---STGH080MSS



Application

Special feature

Gold-plated contacts

Electrical data

Operating voltage [V] 10...30 DC; ("supply class 2" to cULus)

Protection class III

Max. current load per module/slot [A] 2

Max. current load total [A] 2

Outputs

Electrical design PNP

Operating conditions

Ambient temperature [°C] -25...80

Ambient temperature (moving) [°C] -5...60

Protection IP 67; IP 68; (1 m / 7 days)

Mechanical data

Weight [g] 88.5

Dimensions [mm] 23.7 x 30 x 85.4

Materials PBT-GF20; brass nickel-plated

Moulded-body material PBT-GF 20 / brass, nickel-plated

Number of ports splitter box 4



Splitter box

ZDO4F035MSS0000---STGH080MSS

Connector type	M8
----------------	----

Displays / operating elements

Display	switching status	4 x LED, yellow
	operation	1 x LED, green

Accessories

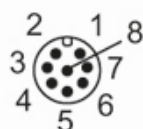
Accessories (optional)	DIN rail adapter:., E73006
	Protective cap: M8, E73005

Remarks

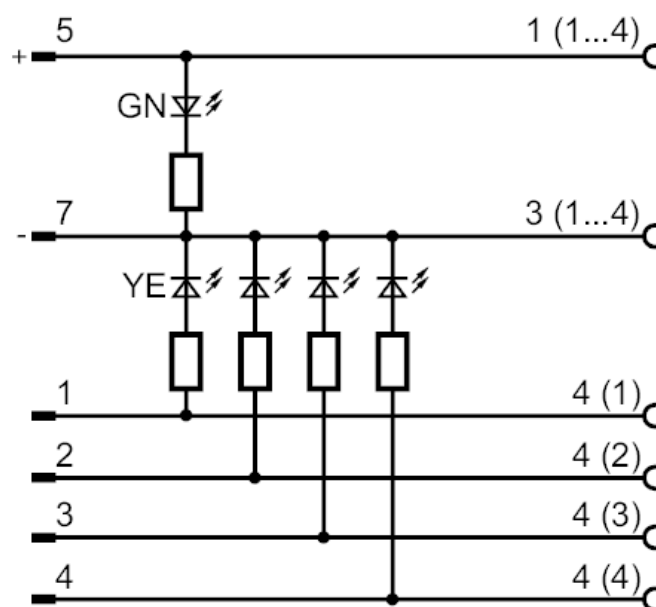
Pack quantity	1 pcs.
---------------	--------

Electrical connection - Connection

Connector: 1 x M12; coding: A; Moulded body: PBT-GF 20 / brass, nickel-plated; Contacts: gold-plated



Connection



EBC050



Splitter box

ZDO4F035MSS0000---STGH080MSS

Electrical connection - slot

Connector: 4 x M8; coding: A; Moulded body: PBT-GF 20 / brass, nickel-plated; Contacts: gold-plated

