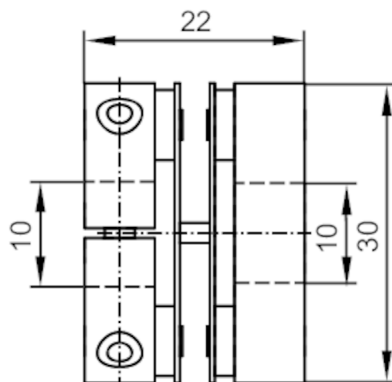


# E60118



## Spring disc coupling electrically isolating

SPRING COUPLING 30-10-10-22



### Mechanical data

Weight	[g]	29.9
Dimensions	[mm]	Ø 30 / L = 22
Materials		aluminium; PA
Tightening torque	[Nm]	tightening torque screws: 100 Ncm; Spring disc coupling: 60 Ncm
External diameter D	[mm]	30
Inside diameter 1	[mm]	10
Inside diameter 2	[mm]	10
Length L	[mm]	22
Clamping screw	[mm]	M3 x 10 - ISO 4762 (2x)
Max. revolution, mechanical [U/min]		12000
Max. axial shaft misalignment [mm]		± 0,4
Max. radial shaft misalignment [mm]		± 0,3
Max. angular displacement [°]		± 2,5
Rigidity of the torsion spring [Nm/rad]		50

### Remarks

Remarks	The data indicated apply to couplings with the above hub borings at an ambient temperature of 23 °C. The values of radial, angular and axial displacement are maximum values which must not reach their maximum simultaneously while in operation.
Pack quantity	1 pcs.