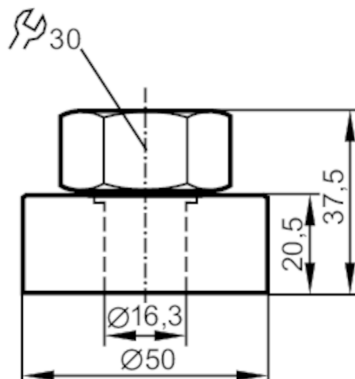




Welding adapter for level sensors

WELDING ADAPTER 50/D16



Application		
Design		for capacitive level sensors LK, LI, LT, LL
Installation		Clamp fitting
Pressure rating	[bar]	0.5
Operating conditions		
Ambient temperature	[°C]	0...80
Tests / approvals		
Pressure Equipment Directive		A possible classification to PED depends on the application and has to be carried out by the user / operator.
Pressure Equipment Directive EAC		The adapter is intended for use in devices, machines and installations that do not fall under the categories of the technical rule TR CU 032/2013.
Safety instructions		The compatibility between medium and product material has to be checked in all applications.
Mechanical data		
Weight	[g]	394.5
Dimensions	[mm]	Ø 50 / L = 37.5
Materials		flange: stainless steel; Lock nut: stainless steel; spacer: brass; clamping ring: FKM
Tightening torque	[Nm]	6...9
Sensor connection		Ø 16 mm
Process connection		welding adapter Ø 50 mm
Remarks		
Pack quantity		1 pcs.