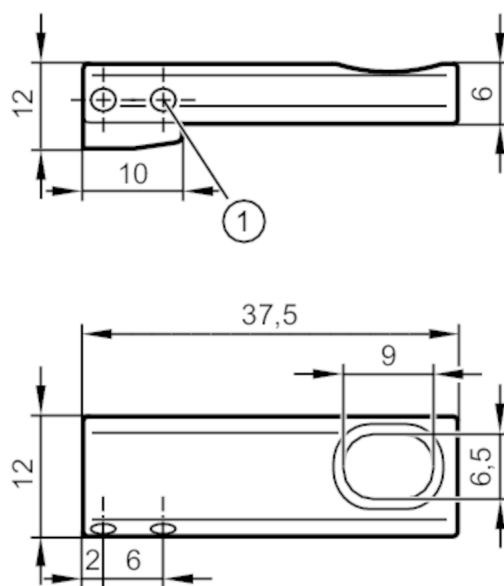




Protective cover for T-slot cylinder sensors

ADAPT Protection T-SLOT Sensor



1 socket head screw M3 x 12

Application

Design for types MKT (T-slot cylinder sensors)

Mechanical data

Weight	[g]	12.2
Type of mounting		fixing: socket head screw M3
Materials		Protective cover: diecast zinc coated; screws: stainless steel

Accessories

Items supplied	socket head screws: 2 x SW 1,5
----------------	--------------------------------

Remarks

Pack quantity	1 pcs.
---------------	--------