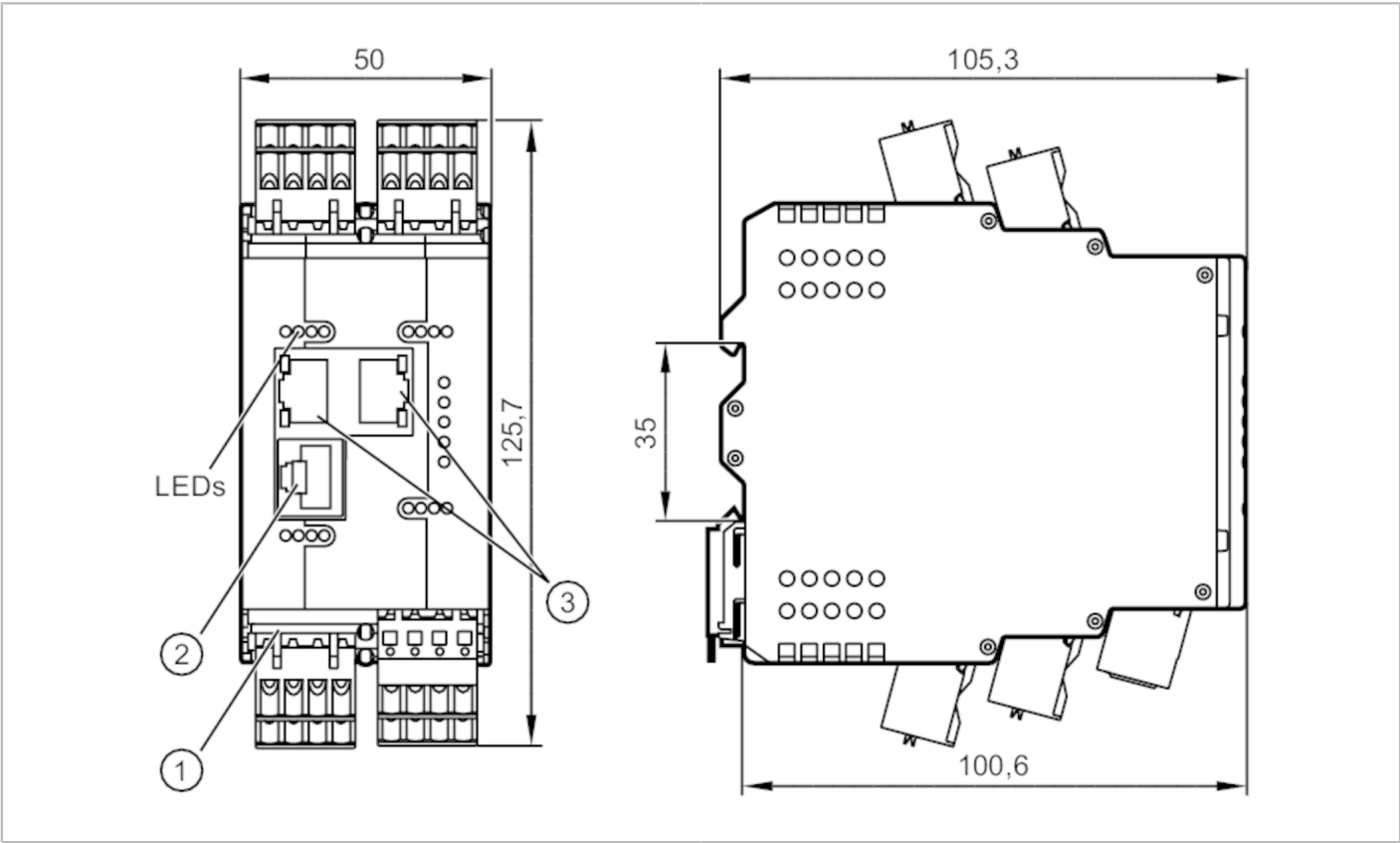


AL1940



IO-Link master with Modbus TCP interface

IO-Link Master CL MB 8P IP20



Application

Application	I/O modules for use in the control cabinet
-------------	--

Electrical data

Operating voltage	[V]	20...30 DC; (US ; to SELV/PELV)
Current consumption	[mA]	300...3900; (US)
Protection class		III

Sensor supply US

Max. current load total	[A]	3.6
-------------------------	-----	-----

Inputs / outputs

Total number of inputs and outputs	16; (configurable)
Number of inputs and outputs	Number of digital inputs: 8; Number of digital outputs: 8

Inputs

Number of digital inputs		8; (IO-Link Port Class A)
Switching level high	[V]	11...30
Switching level low	[V]	0...5
Digital inputs protected against short circuits		yes

Outputs

Number of digital outputs	8; (IO-Link Port Class A)
Max. current load per output [mA]	300



IO-Link master with Modbus TCP interface

IO-Link Master CL MB 8P IP20

Short-circuit proof	yes	
Interfaces		
Communication interface	Ethernet; IO-Link	
Ethernet - Modbus TCP		
Transmission standard	10Base-T; 100Base-TX	
Transmission rate	10 MBit/s; 100 MBit/s	
Protocol	Modbus TCP	
Factory settings	IP address: 192.168.1.250	
	subnet mask: 255.255.255.0	
	gateway IP address: 0.0.0.0	
	MAC address: see type label	
Ethernet - Internet of Things		
Transmission standard	10Base-T; 100Base-TX	
Transmission rate	10 MBit/s; 100 MBit/s	
Protocol	MQTT JSON	
Factory settings	IP address: 169.254.x.x	
	subnet mask: 255.255.0.0	
	gateway IP address: 0.0.0.0	
	MAC address: see type label	
Note on interfaces	Secure protocol: HTTPS	
IO-Link Master		
Transmission type	COM1 (4,8 kBaud); COM2 (38,4 kBaud); COM3 (230,4 kBaud)	
IO-Link revision	1.1	
Number of ports class A	8	
Operating conditions		
Ambient temperature	[°C]	-25...65
Storage temperature	[°C]	-25...85
Max. relative air humidity	[%]	90
Protection	IP 20	
Protection rating (NEMA 250)	6P	
Chemical media	ISO 16750-5	AA, BA, BD, HLP, CC, DB, DC, DD, CA
	NEMA 250 5.13.1	AA
Tests / approvals		
EMC	EN 61000-6-2	
	EN 61000-6-4	
MTTF	[years]	78
Mechanical data		
Weight	[g]	329.5
Materials	housing: PA orange	
Accessories		
Items supplied	cage clamps: 9	
Remarks		
Remarks	For further information please see the operating instructions.	
Pack quantity	1 pcs.	



IO-Link master with Modbus TCP interface

IO-Link Master CL MB 8P IP20

Electrical connection

power supply X31

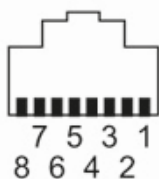
1	GND (US)
2	GND (US)
3	+ 24 V DC (US)
4	+ 24 V DC (US)

IO-Link Port Class A X01...X08

1	Sensor supply (US) L+
2	digital input
3	Sensor supply (US) L-
4	C/Q IO-Link

Electrical connection - Ethernet

Connector: RJ45



EtherNet IP X21, X22

1	TX +
2	TX -
3	RX +
4	not used
5	not used
6	RX -
7	not used
8	not used

IoT X23

1	TX +
2	TX -
3	RX x
4	not used
5	not used
6	RX -
7	not used
8	not used