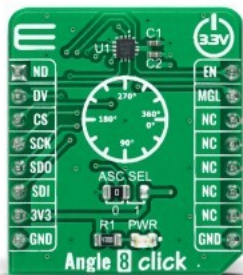


## Angle 8 Click



PID: MIKROE-4971

Angle 8 Click is a compact add-on board that detects the absolute angular position of a permanent magnet. This board features the MA782GGU, a low-power angle sensor with integrated wake-up angle detection from Monolithic Power Systems. With its power cycling ability, the MA782GGU can be optimized for applications that require low average power. It supports a wide range of magnetic field strengths and spatial configurations, with both end-of-shaft and off-axis (side-shaft mounting), supported configurations. Fast data acquisition and processing provides accurate angle measurement at an applied magnetic field of 60mT, alongside magnetic field strength detection with programmable thresholds. This Click board™ is suitable for general-purpose angle measurements, in embedded motion control applications, as a power/speed control trigger solution, and more.

Angle 8 Click is supported by a [mikroSDK](#) compliant library, which includes functions that simplify software development. This [Click board™](#) comes as a fully tested product, ready to be used on a system equipped with the [mikroBUS™](#) socket.

Mikroe produces entire development toolchains for all major microcontroller architectures.

Committed to excellency, we are dedicated to helping engineers bring the project development up to speed and achieve outstanding results.



ISO 27001: 2013 certification of informational security management system.  
ISO 14001: 2015 certification of environmental management system.  
OHSAS 18001: 2008 certification of occupational health and safety management system.



ISO 9001: 2015 certification of quality management system (QMS).

## Specifications

Type	Magnetic
Applications	Can be used for general-purpose angle measurements, in embedded motion control applications, as a power/speed control trigger solution, and more
On-board modules	MA782GGU - low-power angle sensor with integrated wake-up angle detection from Monolithic Power Systems
Key Features	Fast data acquisition, SPI serial interface, magnetic field strength detection, angle detection interrupt to wake-up the system, supported both end-of-shaft and off-axis, and many more
Interface	SPI
ClickID	No
Compatibility	mikroBUS
Click board size	S (28.6 x 25.4 mm)
Input Voltage	3.3V

## Resources

[mikroBUS™](#)
[mikroSDK](#)
[Click board™ Catalog](#)
[Click Boards™](#)

## Downloads

[MA782GGU datasheet](#)
[Angle 8 click 2D and 3D files](#)
[Angle 8 click schematic](#)
[Angle 8 click example on Libstock](#)

Mikroe produces entire development toolchains for all major microcontroller architectures.

Committed to excellency, we are dedicated to helping engineers bring the project development up to speed and achieve outstanding results.



ISO 27001: 2013 certification of informational security management system.  
ISO 14001: 2015 certification of environmental management system.  
OHSAS 18001: 2008 certification of occupational health and safety management system.



ISO 9001: 2015 certification of quality management system (QMS).