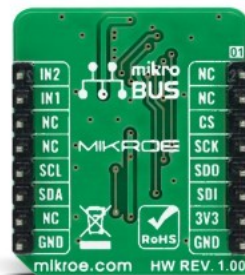


Accel 19 Click



PID: MIKROE-4949

Accel 19 Click is a compact add-on board that contains an acceleration sensor. This board features the [LIS2DTW12](#), an ultra-low-power high-performance three-axis accelerometer from [STMicroelectronics](#). It allows selectable full-scale acceleration measurements in ranges of $\pm 2g$, $\pm 4g$, $\pm 8g$, or $\pm 16g$ in three axes with a configurable host interface that supports both SPI and I2C serial communication. Alongside an embedded $0.8^{\circ}C$ accuracy temperature sensor with ODRs ranging from 50 to 1.6Hz and resolution from 8 to 12 bits, it has a dedicated internal engine to process motion and acceleration detection. This Click board™ is suitable for various applications such as motion-activated functions and user interfaces, tap-double-tap recognition, free-fall detection, tracking, and many more.

Accel 19 Click is supported by a [mikroSDK](#) compliant library, which includes functions that simplify software development. This [Click board™](#) comes as a fully tested product, ready to be used on a system equipped with the [mikroBUS™](#) socket.

Mikroe produces entire development toolchains for all major microcontroller architectures.

Committed to excellency, we are dedicated to helping engineers bring the project development up to speed and achieve outstanding results.



ISO 27001: 2013 certification of informational security management system.
ISO 14001: 2015 certification of environmental management system.
OHSAS 18001: 2008 certification of occupational health and safety management system.



ISO 9001: 2015 certification of quality management system (QMS).

Specifications

Type	Motion
Applications	Can be used for various applications such as motion-activated functions and user interfaces, tap-double-tap recognition, free-fall detection, tracking, and many more
On-board modules	LIS2DTW12 - highly reliable digital triaxial acceleration and temperature sensor from STMicroelectronics
Key Features	Low power consumption, high performance and resolution, high reliability, dedicated internal engine to process motion and acceleration detection, integrated interrupt features, selectable serial interface, and more
Interface	I2C,SPI
Compatibility	mikroBUS
Click board size	S (28.6 x 25.4 mm)
Input Voltage	3.3V

Resources

[mikroBUS™](#)
[mikroSDK](#)
[Click board™ Catalog](#)
[Click Boards™](#)

Downloads

[LIS2DTW12 datasheet](#)
[Accel 19 click schematic](#)
[Accel 19 click 2D and 3D files](#)
[Accel 19 click example on Libstock](#)

Mikroe produces entire development toolchains for all major microcontroller architectures.

Committed to excellency, we are dedicated to helping engineers bring the project development up to speed and achieve outstanding results.



ISO 27001: 2013 certification of informational security management system.
ISO 14001: 2015 certification of environmental management system.
OHSAS 18001: 2008 certification of occupational health and safety management system.



ISO 9001: 2015 certification of quality management system (QMS).