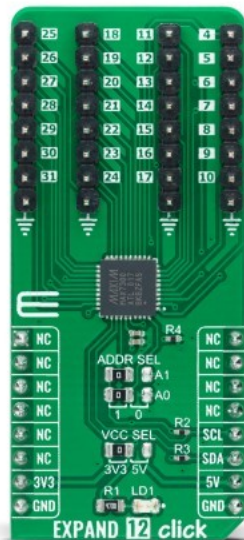


Expand 12 Click



PID: MIKROE-4889

Expand 12 Click is a compact add-on board that contains a multi-port I/O expander. This board features the [MAX7300](#), a general-purpose I/O expander providing remote I/O expansion for most MCU's families from [Analog Devices](#). The MAX7300 comes in a 28-port configuration and allows easy addition of I/O through a standard I2C serial interface. Each port is user-configurable to either a logic input or logic output, capable of sinking 10mA and sourcing 4.5mA. In addition, seven ports feature configurable transition detection logic, which generates an interrupt upon change of port logic level. This Click board™ provides a simple solution when additional I/Os are needed while keeping interconnections to a minimum in system monitoring applications, industrial controllers, portable equipment, and many more.

Expand 12 Click is supported by a [mikroSDK](#) compliant library, which includes functions that simplify software development. This [Click board™](#) comes as a fully tested product, ready to be used on a system equipped with the [mikroBUS™](#) socket.

Mikroe produces entire development toolchains for all major microcontroller architectures.

Committed to excellency, we are dedicated to helping engineers bring the project development up to speed and achieve outstanding results.



ISO 27001: 2013 certification of informational security management system.
ISO 14001: 2015 certification of environmental management system.
OHSAS 18001: 2008 certification of occupational health and safety management system.



ISO 9001: 2015 certification of quality management system (QMS).

Specifications

Type	Port expander
Applications	Can be used in system monitoring applications, industrial controllers, portable equipment, and many more
On-board modules	MAX7300 - general-purpose input/output (GPIO) expander from Maxim Integrated, now part of Analog Devices
Key Features	Remote I/O pins that default to inputs at Power-Up, compliant with the I2C-bus Fast and Standard modes, 5V tolerant I/Os, sinking 10mA and sourcing 4.5mA, programmable slave addresses, and more
Interface	I2C
Compatibility	mikroBUS
Click board size	L (57.15 x 25.4 mm)
Input Voltage	3.3V or 5V

Resources

[mikroBUS™](#)
[mikroSDK](#)
[Click board™ Catalog](#)
[Click Boards™](#)

Downloads

[Expand 12 click schematic](#)
[Expand 12 click 2D and 3D files](#)
[MAX7300 datasheet](#)
[Expand 12 click example on Libstock](#)

Mikroe produces entire development toolchains for all major microcontroller architectures.

Committed to excellency, we are dedicated to helping engineers bring the project development up to speed and achieve outstanding results.



ISO 27001: 2013 certification of informational security management system.
ISO 14001: 2015 certification of environmental management system.
OHSAS 18001: 2008 certification of occupational health and safety management system.



ISO 9001: 2015 certification of quality management system (QMS).