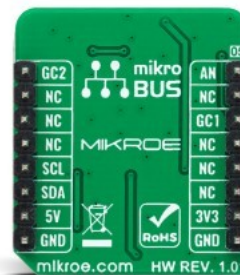
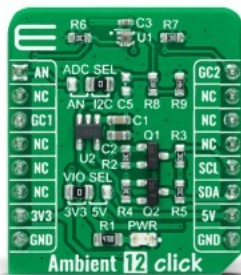


Ambient 12 Click



PID: MIKROE-4781

Ambient 12 Click is a compact add-on board used to sense the amount of the present ambient light. This board features the [BH1620FVC](#), an analog current-output type ambient light sensor from [Rohm Semiconductor](#). It is characterized by spectral sensitivity close to human eyes sensitivity and outputs current in proportion to brightness. It also has four configurable modes of operation, shutdown mode in association with three gain modes, and low sensitivity variations of +/-15%. This Click board™ is the most suitable for obtaining ambient light data for adjusting brightness in applications that require power saving and better visibility.

Ambient 12 Click is supported by a [mikroSDK](#) compliant library, which includes functions that simplify software development. This [Click board™](#) comes as a fully tested product, ready to be used on a system equipped with the [mikroBUS™](#) socket.

Mikroe produces entire development toolchains for all major microcontroller architectures.

Committed to excellency, we are dedicated to helping engineers bring the project development up to speed and achieve outstanding results.



ISO 27001: 2013 certification of informational security management system.
ISO 14001: 2015 certification of environmental management system.
OHSAS 18001: 2008 certification of occupational health and safety management system.



ISO 9001: 2015 certification of quality management system (QMS).

Specifications

Type	Optical
Applications	Can be used for obtaining ambient light data for adjusting brightness in applications that require power saving and better visibility
On-board modules	BH1620FVC - analog current-output type ambient light sensor from Rohm Semiconductor
Key Features	Low power consumption, spectral sensitivity close to human eyes sensitivity, output current in proportion to brightness, built-in shutdown function, configurable gain mode, low sensitivity variation, and more
Interface	Analog,I2C
ClickID	No
Compatibility	mikroBUS
Click board size	S (28.6 x 25.4 mm)
Input Voltage	3.3V or 5V

Resources

[mikroBUS™](#)

[mikroSDK](#)

[Click board™ Catalog](#)

[Click boards™](#)

Downloads

[Ambient 12 click example on Libstock](#)

[BH1620FVC datasheet](#)

[Ambient 12 click 2D and 3D files](#)

[Ambient 12 click schematic](#)

Mikroe produces entire development toolchains for all major microcontroller architectures.

Committed to excellency, we are dedicated to helping engineers bring the project development up to speed and achieve outstanding results.



ISO 27001: 2013 certification of informational security management system.
ISO 14001: 2015 certification of environmental management system.
OHSAS 18001: 2008 certification of occupational health and safety management system.



ISO 9001: 2015 certification of quality management system (QMS).