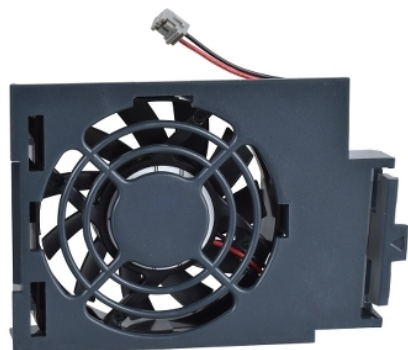


Product data sheet

Characteristics

VZ3V32A100

Wear part, fan for variable speed drive, Altivar 32, Altivar Machine 320, from 0.18 to 1.5kW, single and three phase



Main

Accessory / Separate Part Type	Fan kit
Product or Component Type	Fan
Accessory / separate part category	Cooling accessory

Complementary

Range Compatibility	Altivar 32 Altivar 320
Accessory / separate part destination	Variable speed drive
Kit composition	Fan Mounting bracket Instruction sheet
Product compatibility	Variable speed drive ATV32 0.18 kW, 200...240 V single phase Variable speed drive ATV32 0.37 kW, 200...240 V single phase Variable speed drive ATV32 0.55 kW, 200...240 V single phase Variable speed drive ATV32 0.75 kW, 200...240 V single phase Variable speed drive ATV32 0.37 kW, 380...500 V three phase Variable speed drive ATV32 0.55 kW, 380...500 V three phase Variable speed drive ATV32 0.75 kW, 380...500 V three phase Variable speed drive ATV32 1.1 kW, 380...500 V three phase Variable speed drive ATV32 1.5 kW, 380...500 V three phase Variable speed drive ATV320...B 0.18 kW, 200...240 V single phase Variable speed drive ATV320...B 0.37 kW, 200...240 V single phase Variable speed drive ATV320...B 0.55 kW, 200...240 V single phase Variable speed drive ATV320...B 0.75 kW, 200...240 V single phase Variable speed drive ATV320...B 0.37 kW, 380...500 V three phase Variable speed drive ATV320...B 0.55 kW, 380...500 V three phase Variable speed drive ATV320...B 0.75 kW, 380...500 V three phase Variable speed drive ATV320...B 1.1 kW, 380...500 V three phase Variable speed drive ATV320...B 1.5 kW, 380...500 V three phase

Ordering and shipping details

Category	22149-ATV320 ACCESSORIES
Discount Schedule	CP4B
GTIN	3606480517969
Nbr. of units in pkg.	1
Package weight(Lbs)	6.28 oz (178.0 g)
Returnability	Yes
Country of origin	ID

The information provided in this documentation contains general descriptions and/or technical characteristics of the products of the performance of the products contained herein. This documentation is not intended as a substitute for and is not to be used for determining suitability or reliability of these products for specific user applications. It is the duty of any such user or integrator to perform the appropriate and complete risk analysis, evaluation and testing of the products with respect to the relevant specific application or use thereof. Neither Schneider Electric Industries SAS nor any of its affiliates or subsidiaries shall be responsible or liable for misuse of the information contained herein.

Packing Units

Unit Type of Package 1	PCE
Package 1 Height	2.76 in (7.0 cm)
Package 1 width	6.69 in (17.0 cm)
Package 1 Length	9.06 in (23.0 cm)
Unit Type of Package 2	P06
Number of Units in Package 2	56
Package 2 Weight	50.64 lb(US) (22.968 kg)
Package 2 Height	28.94 in (73.5 cm)
Package 2 width	31.50 in (80.0 cm)
Package 2 Length	23.62 in (60.0 cm)

Fan Replacement

1	Push the locking tab.
2	Disconnect the plug-in connector and remove the fan.

