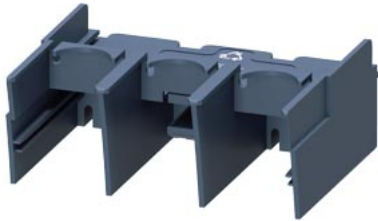


Terminal covers (2 units) for 3-phase infeed 50/70 mm2  
3RA6813-8AB/AC



General technical data				
product brand name		SIRIUS		
product designation		Terminal cover screw-type infeeds		
degree of pollution		3		
installation altitude at height above sea level maximum	m	2 000		
ambient temperature				
• during transport	°C	-55 ... +80		
• during storage	°C	-55 ... +80		
• during operation	°C	-20 ... +60		
vibration resistance		f = 4 to 5.8 Hz; d = 15 mm; f = 5.8 to 500 Hz; a = 2 m / s2 10 cycles		
shock resistance		Semi-sinusoidal a = 6 m/s2 at 10 ms; 3 pos. and 3 neg. Shock in all axes		
Installation/ mounting/ dimensions				
fastening method		snap-on mounting		
width	mm	70		
height	mm	60		
depth	mm	28		
Certificates/ approvals				
General Product Approval	EMC	Declaration of Conformity	Test Certificates	Marine / Shipping

[Confirmation](#)



[Type Test Certificates/Test Report](#)



other

[Confirmation](#)

#### Further information

Information- and Downloadcenter (Catalogs, Brochures,...)  
<https://www.siemens.com/ic10>  
Industry Mall (Online ordering system)

<https://mall.industry.siemens.com/mall/en/en/Catalog/product?mlfb=3RA6880-3AB>

Cax online generator

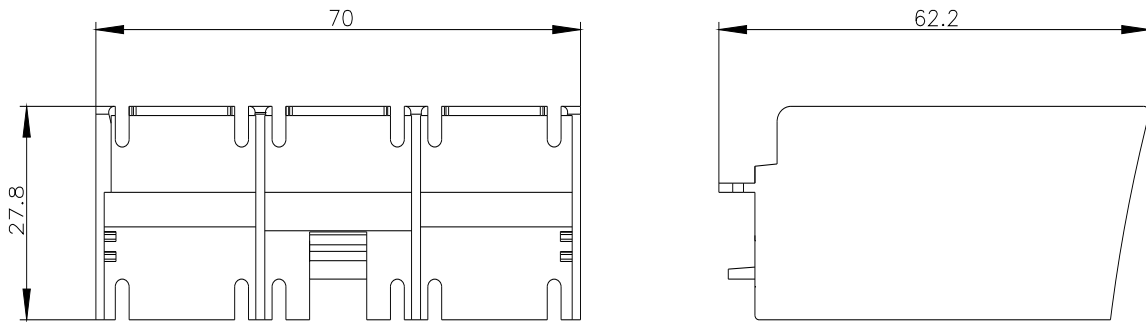
<http://support.automation.siemens.com/WW/CAXorder/default.aspx?lang=en&mlfb=3RA6880-3AB>

Service&Support (Manuals, Certificates, Characteristics, FAQs,...)

<https://support.industry.siemens.com/cs/ww/en/ps/3RA6880-3AB>

Image database (product images, 2D dimension drawings, 3D models, device circuit diagrams, EPLAN macros, ...)

[http://www.automation.siemens.com/bilddb/cax\\_de.aspx?mlfb=3RA6880-3AB&lang=en](http://www.automation.siemens.com/bilddb/cax_de.aspx?mlfb=3RA6880-3AB&lang=en)



last modified:

1/18/2021 