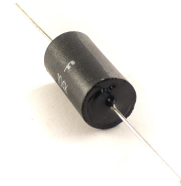
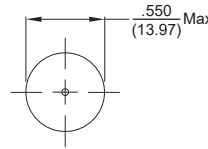
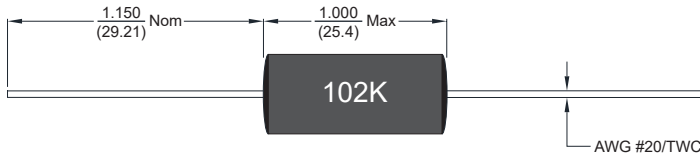




Axial Shielded Power Chokes

ASPC80

Dimensions: $\frac{\text{inch}}{\text{(mm)}}$



Allied Part Number	Inductance (μH)	Tolerance (%)	DCR (Ω) ±20%	Rated Current (mA)
ASPC80-1R0K-RC	1.0	10	.0066	1500
ASPC80-1R2K-RC	1.2	10	.007	1400
ASPC80-1R5K-RC	1.5	10	.008	1400
ASPC80-1R8K-RC	1.8	10	.008	1400
ASPC80-2R2K-RC	2.2	10	.008	1400
ASPC80-2R7K-RC	2.7	10	.009	1400
ASPC80-3R3K-RC	3.3	10	.009	1400
ASPC80-3R9K-RC	3.9	10	.009	1400
ASPC80-4R7K-RC	4.7	10	.012	1400
ASPC80-5R6K-RC	5.6	10	.012	1400
ASPC80-6R8K-RC	6.8	10	.012	1400
ASPC80-8R2K-RC	8.2	10	.013	1400
ASPC80-100K-RC	10	10	.013	1400
ASPC80-120K-RC	12	10	.013	1400
ASPC80-150K-RC	15	10	.014	1400
ASPC80-180K-RC	18	10	.017	1400
ASPC80-220K-RC	22	10	.020	1400
ASPC80-270K-RC	27	10	.020	1400
ASPC80-330K-RC	33	10	.022	1390
ASPC80-390K-RC	39	10	.023	1360
ASPC80-470K-RC	47	10	.024	1350
ASPC80-560K-RC	56	10	.027	1355
ASPC80-680K-RC	68	10	.028	1350
ASPC80-820K-RC	82	10	.029	1350
ASPC80-101K-RC	100	10	.030	1350
ASPC80-121K-RC	120	10	.034	1350
ASPC80-151K-RC	150	10	.036	1350
ASPC80-181K-RC	180	10	.044	1350
ASPC80-221K-RC	220	10	.047	1350
ASPC80-271K-RC	270	10	.049	1350
ASPC80-331K-RC	330	10	.052	1300
ASPC80-391K-RC	390	10	.053	1300
ASPC80-471K-RC	470	10	.058	1300
ASPC80-561K-RC	560	10	.063	1300
ASPC80-681K-RC	680	10	.068	1300
ASPC80-821K-RC	820	10	.080	1300
ASPC80-102K-RC	1000	10	.091	1300
ASPC80-122K-RC	1200	10	.110	1250
ASPC80-152K-RC	1500	10	.116	1250
ASPC80-182K-RC	1800	10	.130	1250
ASPC80-222K-RC	2200	10	.177	1120
ASPC80-272K-RC	2700	10	.190	1120
ASPC80-332K-RC	3300	10	.213	1120
ASPC80-392K-RC	3900	10	.287	880
ASPC80-472K-RC	4700	10	.364	880
ASPC80-562K-RC	5600	10	.440	707
ASPC80-682K-RC	6800	10	.562	556
ASPC80-822K-RC	8200	10	.700	556

Allied Part Number	Inductance (mH)	Tolerance (%)	DCR (Ω) ±20%	Rated Current (mA)
ASPC80-103K-RC	10	10	.741	437
ASPC80-123K-RC	12	10	.827	437
ASPC80-153K-RC	15	10	1.10	350
ASPC80-183K-RC	18	10	1.26	227
ASPC80-223K-RC	22	10	1.67	224
ASPC80-273K-RC	27	10	1.92	224
ASPC80-333K-RC	33	10	2.78	224
ASPC80-393K-RC	39	10	3.48	224
ASPC80-473K-RC	47	10	4.32	224
ASPC80-563K-RC	56	10	5.44	224
ASPC80-683K-RC	68	10	6.80	224
ASPC80-823K-RC	82	10	7.20	176
ASPC80-104K-RC	100	10	8.50	176
ASPC80-124K-RC	120	10	10.56	138
ASPC80-154K-RC	150	10	12.24	138
ASPC80-184K-RC	180	10	13.68	138
ASPC80-224K-RC	220	10	24.00	110
ASPC80-274K-RC	270	10	27.00	88
ASPC80-334K-RC	330	10	32.00	80
ASPC80-394K-RC	390	10	37.00	71
ASPC80-474K-RC	470	10	39.48	71
ASPC80-564K-RC	560	10	46.68	71
ASPC80-684K-RC	680	10	56.80	71

Features

- Axial Leaded Power Chokes
- Magnetically Shielded
- Epoxy End Caps for added Lead Strength and Protection

Electrical

Inductance Range: 1.0μH to 680mH
Tolerance: ±10% entire range
Test Frequency: 1KHz
Operating Temp: -55°C to +125°C
Current Rating: Based on 0.33 watt power dissipation for approximately 20°C Temperature Rise.

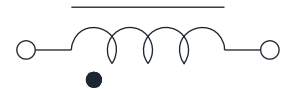
Test Equipment

Inductance: HP 4263B (1R0M-823K)
 HP4284-A (104K-684K)
Current: 11021 Current Source
DCR: HP4263B DCR Meter

Physical

Packaging: Bulk
Marking: EIA Inductance code

Schematics



All specifications are subject to change without notice.